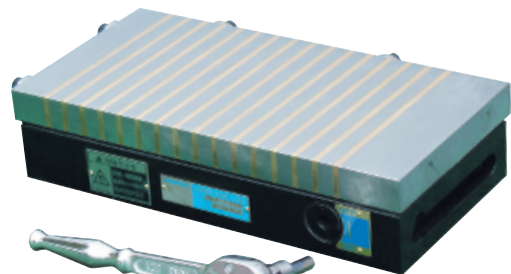


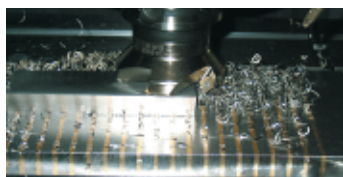
PERMANENT MAGNETIC CHUCKS

Model RMA SUPER POWERFUL PERMANENT MAGNETIC CHUCK FOR CUTTING

Greatest holding power in KANETEC permanent magnetic chuck series. New design of ON-OFF switch provides improved durability.



RMA-1530A



[Application]

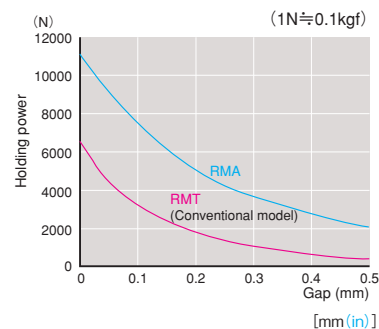
Usable for a wide range of applications from heavy duty cutting to heavy duty grinding. Also suitable for certain small workpieces and thin workpieces.

[Features]

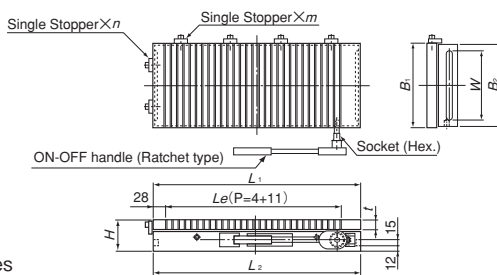
- Super powerful permanent magnetic chucks developed by special design for heavy duty cutting.
- Relatively fine pole pitches make the magnetism work effectively on certain small workpieces and thin workpieces.
- A drop in magnetic force due to air gaps is little, enabling heavy duty cutting of mill scale steel.
- The holding power is very strong, yet the operation of the select ratchet handle is light and safe. The handle is detachable for space saving.
- Usable in wet conditions.

RMA type holding power characteristics

- Relation between gaps and holding power by use of □116 test piece



RMA-3060A and RMA-4060A require two places for ON-OFF ratchet operation.



Model	Nominal Size	Work Face				Mounting Face			Height H	No. of Stoppers		Mass			
		B ₁	L ₁	t	L _e	B ₂	L ₂	W		n	m				
RMA-1530A	150 (5.90) × 300 (11.8)	150 (5.90)	300 (11.8)	23 (0.90)	229 (9.01)	146 (5.74)	296 (11.6)	115 (4.52)	69 (2.71)	2 pcs	2 pcs	24kg/ 53 lb			
RMA-1545A	150 (5.90) × 450 (17.7)		450 (17.7)		379 (14.9)						446 (17.5)	3 pcs	36kg/ 79 lb		
RMA-2050A	200 (7.87) × 500 (19.6)	200 (7.87)	500 (19.6)		424 (16.6)	196 (7.71)	496 (19.5)				165 (6.49)	73 (2.87)	4 pcs	4 pcs	56kg/ 123 lb
RMA-2060A	200 (7.87) × 600 (23.6)		600 (23.6)		529 (20.8)									596 (23.4)	5 pcs
RMA-2550A	250 (9.84) × 500 (19.6)	250 (9.84)	500 (19.6)		424 (16.6)	246 (9.68)	496 (19.5)				215 (8.46)	265 (10.4)	4 pcs	4 pcs	71kg/ 156 lb
RMA-3060A	300 (11.8) × 600 (23.6)	300 (11.8)	600 (23.6)		544 (21.4)					296 (11.6)				596 (23.4)	365 (14.3)
RMA-4060A	400 (15.7) × 600 (23.6)	400 (15.7)	600 (23.6)	544 (21.4)	396 (15.5)	596 (23.4)	365 (14.3)	4 pcs	5 pcs	136kg/ 299 lb					

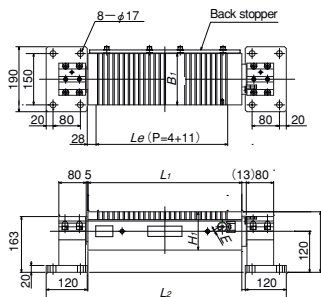
※ The ratchet handle (with socket) is included.

Model RMA-U TILT TYPE POWERFUL PERMANENT MAGNETIC CHUCK

Greatest holding power in KANETEC tilt type permanent magnetic chucks!



RMA-1545U



[Application]

Suitable for heavy duty grinding of inclined surfaces and light duty cutting.

[Features]

- The strong holding power enables inclined cutting.
- A drop in magnetic force due to air gaps is minimal to make this type suitable for cutting of mill scale steel.
- The tilting angle can be set as desired in a range of 90° forward and 90° backward.
- A 200-mm wide type is also available.



An example of machining

Model	Nominal Size	Work Face				Length L ₂	Height H ₂	Handle Hole		Mass
		B ₁	L ₁	L _e	H ₁			E		
RMA-1530U	150 (5.90) × 300 (11.8)	150 (5.90)	300 (11.8)	229 (9.01)	112 (4.40)	552 (21.7)	177 (6.96)	Hex. 8 (0.31)	66kg/ 145 lb	
RMA-1545U	150 (5.90) × 450 (17.7)		450 (17.7)	379 (14.9)		702 (27.6)			79kg/ 174 lb	
RMA-2050U	200 (7.87) × 500 (19.6)	200 (7.87)	500 (19.6)	424 (16.6)		752 (29.6)			108kg/ 238 lb	
RMA-2060U	200 (7.87) × 600 (23.6)		600 (23.6)	529 (20.8)	852 (33.5)	125kg/ 275 lb				

※ The ratchet handle (with socket) is included.

※ The scaled ring can be used to set an angle roughly. When it is necessary to set the angle accurately, use a sine bar or other suitable device. Note that when it is tilted forward, the ON-OFF operation will become difficult.

ELECTROMAGNETIC CHUCK CONTROLLERS PERMANENT MAGNETIC CHUCKS PERMANENT ELECTROMAGNETIC CHUCKS BLOCKS FOR MC VACUUM CHUCKS PROMETLA* SINE BAR CHUCKS BLOCKS, HOLDERS, MINI CHUCKS HOLDING TOOLS MEASURING TOOL HOLDERS MAGNETIC HOLDERS MAGNETIC TOOLS