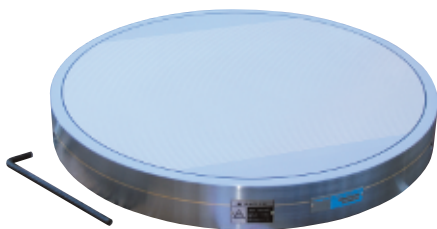


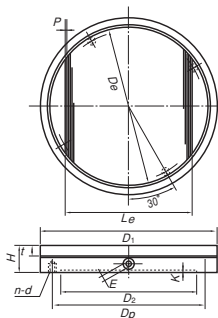
# PERMANENT MAGNETIC CHUCKS

## Model RMCW ROUND PERMANENT MAGNETIC MICROPITCH CHUCK

ELECTROMAGNETIC CHUCK CONTROLLERS



RMCW-50B



### [Application]

Suitable for grinding a wide range of workpieces, small and large, thin and thick on grinders. Since these chucks are thin, they can be used in a wide range of applications including securing workpieces temporarily.

### [Features]

- Thin; 43 mm to 60 mm.
- Micro pole pitch; can be used with any sizes of workpieces, small and large and thin and thick.
- The handle is a hex wrench key. It can be operated lightly. A half turn turns on and off the magnetic force.
- The changeover handle can be set at an angle to generate a weak magnetic force for easy temporary positioning of workpieces.

[mm (in)]

Model	Nominal Size	Work Face			Pole Pitch	Mounting Face					Face Plate Thickness	Height	Handle Hole	Mass
		D <sub>1</sub>	D <sub>e</sub>	L <sub>e</sub>		D <sub>2</sub>	K	D <sub>p</sub>	n	d				
RMCW-6C	60 (2.36)	60 (2.36)	51 (2.00)	38 (1.49)	2.5 (0.5+2) (0.09)	30 (1.18)	2 (0.07) ※1	44 (1.73)	2 (0.07) ※1	M 6 (0.23)	18 (0.70)	43 (1.69)	Hex. 8 (0.31)	1kg/ 2 lb
RMCW-8C	80 (3.14)	80 (3.14)	71 (2.79)	53 (2.08)		40 (1.57)		60 (2.36)						3 (0.11) ※1
RMCW-10B	100 (3.93)	100 (3.93)	90 (3.54)	64 (2.55)	3 (1+2) (0.12)	60 (2.36)	2 (0.07)	80 (3.15)	4 (0.15)	M 8 (0.31)	18 (0.70)	43 (1.69)	Hex. 8 (0.31)	2.5kg/ 6 lb
RMCW-13B	125 (4.92)	125 (4.92)	99 (3.89)	67 (2.63)		80 (3.15)		112 (4.40)						3 (0.11) ※1
RMCW-16B	160 (6.29)	160 (6.29)	134 (5.27)	88 (3.46)	3 (1+2) (0.12)	125 (4.92)	3 (0.11)	160 (6.29)	4 (0.15)	M 8 (0.31)	18 (0.70)	43 (1.69)	Hex. 8 (0.31)	6.5kg/ 14 lb
RMCW-20B	200 (7.87)	200 (7.87)	172 (6.77)	121 (4.76)		160 (6.29)		180 (7.08)						3 (0.11) ※1
RMCW-25B	250 (9.84)	250 (9.84)	220 (8.66)	184 (7.24)	3 (1+2) (0.12)	200 (7.87)	3 (0.11)	224 (8.81)	4 (0.15)	M10 (0.39)	25 (0.98)	60 (2.36)	Hex. 8 (0.31)	15kg/ 33 lb
RMCW-30B	300 (11.8)	300 (11.8)	272 (10.7)	220 (8.66)		230 (9.05)		260 (10.2)						3 (0.11) ※1
RMCW-40B	400 (15.7)	400 (15.7)	370 (14.5)	319 (12.5)	3 (1+2) (0.12)	315 (12.4)	3 (0.11)	355 (13.9)	4 (0.15)	M12 (0.47)	25 (0.98)	60 (2.36)	Hex. 8 (0.31)	45kg/ 99 lb
RMCW-50B	500 (19.6)	500 (19.6)	466 (18.3)	358 (14.1)		350 (13.7)		400 (15.7)						3 (0.11) ※1
RMCW-60B	600 (23.6)	600 (23.6)	566 (22.2)	457 (18.0)	3 (1+2) (0.12)	450 (17.7)	3 (0.11)	500 (19.6)	4 (0.15)	M12 (0.47)	25 (0.98)	60 (2.36)	Hex. 8 (0.31)	115kg/ 253 lb

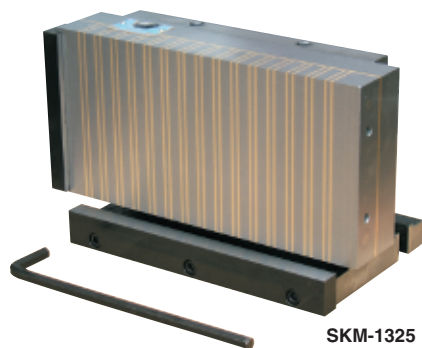
※1...For the location of mounting holes of 6C, 8C and 10B, please contact us. ※As for the handle, a hex wrench key is included.

PERMANENT MAGNETIC CHUCKS

BLOCKS FOR MC

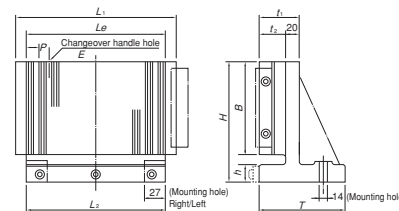
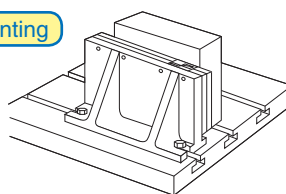
## Model SKM VERTICAL PERMANENT MAGNETIC CHUCK

VACUUM CHUCKS



SKM-1325

### An example of mounting



### [Application]

These chucks are suitable for applications where when securing a workpiece on the table of a machine, it needs to be held vertically due to its shape or it needs to be secured from sides additionally when it cannot be held sufficiently horizontally.

### [Features]

- The permanent magnetic chuck used in Model SKM is our powerful RMT.
- Hold various sizes of workpieces; thin, small and thick.

[mm (in)]

Model	Nominal Size	Work Face			Pole Pitch	Mounting Face		Thickness		Height		Handle Hole	Mass
		B	L <sub>1</sub>	L <sub>e</sub>		T	L <sub>2</sub>	t <sub>1</sub>	t <sub>2</sub>	H	h		
SKM-1018	100 (3.93) × 175 (6.89)	100 (3.93)	175 (6.89)	137 (5.39)	14.5 (1.5+3.2+1.5+8.3) 0.57 (0.05+0.12+0.05+0.32)	130 (5.11)	145 (5.70)	70 (2.75)	50 (1.96)	130 (5.11)	20 (0.78)	Hex. 8 (0.31)	13kg/ 28 lb
SKM-1325	125 (4.92) × 250 (9.84)	125 (4.92)	250 (9.84)	209 (8.22)			210 (8.26)			22kg/ 48 lb			
SKM-1530	150 (5.90) × 300 (11.8)	150 (5.90)	300 (11.8)	253 (9.96)			260 (10.2)			30kg/ 66 lb			

※One set of stoppers is included. As for the handle, a hex wrench key is included.

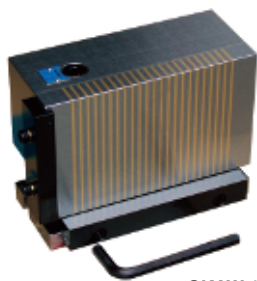
PROMETA\*

SINE BAR CHUCKS

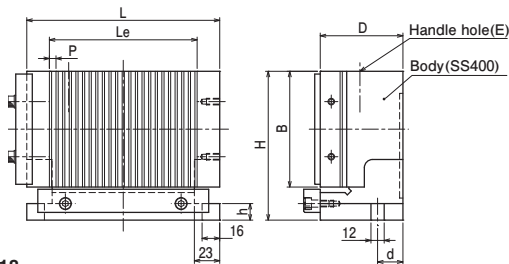
BLOCKS HOLDERS, MINI CHUCKS

## Model SKAW VERTICAL PERMANENT MAGNETIC CHUCK

HOLDING TOOLS



SKAW-1018



### A new powerful model added to permanent magnetic chucks for securing workpieces in vertical direction!

### [Application]

This chuck is suitable for applications where when securing a workpiece on the table of a machine, it needs to be held vertically due to its shape or it needs to be secured from sides additionally when it cannot be held sufficiently horizontally.

### [Features]

- Compared with Model SKM, this model can hold smaller and thinner (3 mm) workpieces.
- The rigid construction facilitates maintenance such as recovering the original accuracy.

[mm (in)]

Model	Nominal Size	Work Face			Pole Pitch	Thickness	Height	Mounting Face		Handle Hole	Mass
		B	L	L <sub>e</sub>				d	h		
SKAW-1018	105 (4.13) × 175 (6.89)	105 (4.13)	175 (6.89)	134 (5.27)	2+4 (0.07+0.15)	75 (2.95)	135 (5.31)	23 (0.90)	12 (0.47)	Hex. 8 (0.31)	14kg/ 30 lb

※One set of stoppers is included. As for the handle, a hex wrench key is included.

MEASURING TOOL HOLDERS

MAGNETIC HOLDERS

MAGNETIC TOOLS