

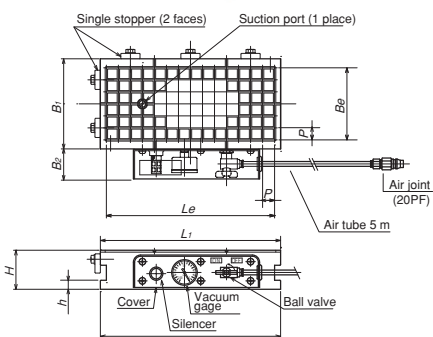
## Model KVR-GV VACUUM CHUCK WITH BUILT-IN VACUUM SYSTEM

**No external vacuum system required!  
Air consumption reduced significantly!**

**Dry operation**  
(Wet operation not allowed)



KVR-GV1530



**[Application]**

Suitable for light duty cutting by vacuum chucking such nonmagnetic workpieces as aluminum alloy, copper alloy, stainless steel and plastics.

**[Features]**

- Compared with the conventional ejector vacuum system, the air consumption amount can be reduced significantly.
- The chuck can be used by simply connecting a quick-connector type tube to a compressor in the factory.
- Since no vacuum system is required, the chuck has good response and is capable of holding and releasing workpieces quickly.
- The internal parts can be replaced easily by opening the lid on the chuck mounting face.
- The material of the main unit can be selected from two kinds; mild steel and aluminum alloy.

Model	Main Unit Material	Nominal Size	Dimensions							Grid Pitch	Effective Area	Mass
			L <sub>1</sub>	L <sub>2</sub>	B <sub>1</sub>	H	h	B <sub>2</sub>	P×P			
KVR-GV1530	Mild steel	150(5.90) × 300(11.8)	300(11.8)	300(11.8)	150(5.90)	65(2.55)	15(0.59)	50(1.96)	20(0.78) × 20(0.78)	120(4.72) × 280(11.0)	17kg/37 lb	
KVR-GV2050		200(7.87) × 500(19.7)	500(19.7)	524(20.6)	200(7.87)					180(7.08) × 480(18.8)	43kg/94 lb	
KVR-GV3060		300(11.8) × 600(23.6)	600(23.6)	624(24.5)	300(11.8)					25(0.98) × 25(0.98)	275(10.8) × 575(22.6)	82kg/180 lb
KVR-GVA1530	Aluminum alloy	150(5.90) × 300(11.8)	300(11.8)	300(11.8)	150(5.90)	65(2.55)	15(0.59)	50(1.96)	20(0.78) × 20(0.78)	120(4.72) × 280(11.0)	6kg/13 lb	
KVR-GVA2050		200(7.87) × 500(19.7)	500(19.7)	524(20.6)	200(7.87)					180(7.08) × 480(18.8)	15kg/33 lb	
KVR-GVA3060		300(11.8) × 600(23.6)	600(23.6)	624(24.5)	300(11.8)					25(0.98) × 25(0.98)	275(10.8) × 575(22.6)	29kg/63 lb

\*Seal rubber φ4, 10 m, air tube 5 m and clamp parts are included. \*The capacity of a compressor to use must be 0.75 kW or over.

## Model KVR-G VACUUM CHUCK (GRID SEAL TYPE)



KVR-G1530

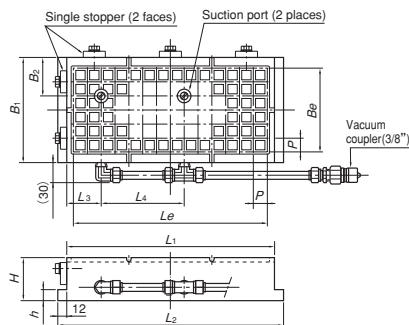
**[Application]**

Suitable for grinding by vacuum chucking such nonmagnetic workpieces as aluminum alloy, copper alloy, stainless steel and plastics.

**[Features]**

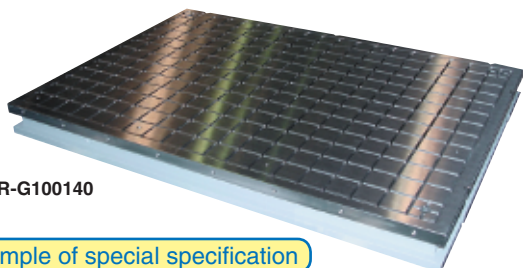
- Workpieces are vacuum chucked in the area defined by seal rubber strings set in the grid grooves, ensuring good sealing and consistent holding power.
- A desired work area can be set by cutting the seal rubber string (φ6 × 5 - 20 m included) according to workpieces.
- The suction ports are provided in two places on all models to allow setting two workpieces.
- A vacuum coupler to connect to the vacuum system is provided. (Vacuum is turned on and off with the valve on the vacuum system.)
- Single stoppers are provided.
- The main unit is made of iron to enable the chuck to be held by an existing magnetic chuck.

**Vacuum system required additionally**



See "Model KETV:ELECTROMAGNETIC CHUCK WITH VACUUM CHUCK" on page 11.

Model	Nominal Dimensions	Dimensions							Grid Pitch	Effective Area	Mass	Applicable Vacuum System	
		L <sub>1</sub>	L <sub>2</sub>	B <sub>1</sub>	H	h	B <sub>2</sub>	L <sub>3</sub>					L <sub>4</sub>
KVR-G1530	150(5.90) × 300(11.8)	300(11.8)	324(12.7)	150(5.90)	60(2.36)	15(0.59)	55(2.16)	50(1.96)	120(4.72)	20×20(0.78×0.78)	120(4.72) × 280(11.0)	22kg/48 lb	VPU-E10 VPU-D20 VPU-EG
KVR-G2050	200(7.87) × 500(19.7)	500(19.7)	524(20.6)	200(7.87)			63(2.48)		63(2.48)	120(4.72)	220(8.66)	180(7.08) × 480(18.8)	
KVR-G3060	300(11.8) × 600(23.6)	600(23.6)	624(24.5)	300(11.8)	63(2.48)	63(2.48)	275(10.8)	275(10.8)	275(10.8) × 575(22.6)	82kg/180 lb			
KVR-G4080	400(15.7) × 800(31.5)	800(31.5)	824(32.4)	400(15.7)	63(2.48)	63(2.48)	350(13.7)	350(13.7)	375(14.7) × 775(30.5)	146kg/321 lb			
KVR-G50100	500(19.7) × 1000(39.4)	1000(39.4)	1024(40.3)	500(19.7)	63(2.48)	63(2.48)	475(18.7)	475(18.7)	475(18.7) × 975(38.3)	228kg/503 lb			



KVR-G100140



KVR-GR

An example of KVR-GR special specification

An example of special specification

ELECTROMAGNETIC CHUCKS  
CHUCK CONTROLLERS  
PERMANENT MAGNETIC CHUCKS  
BLOCKS FOR MC  
VACUUM CHUCKS  
PROMELTA\* SYSTEM  
SINE BAR CHUCKS  
BLOCKS, HOLDERS, MINI CHUCKS  
HOLDING TOOLS  
MEASURING TOOL HOLDERS  
MAGNETIC HOLDERS  
MAGNETIC TOOLS