

HOLDING TOOLS

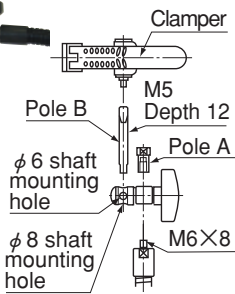
Model MPV-MF MULTI-PURPOSE FLEXIBLE HOLDER

Flexible usage! Convenient multi-clamper!!

Design registered



An example of usage



[Application]

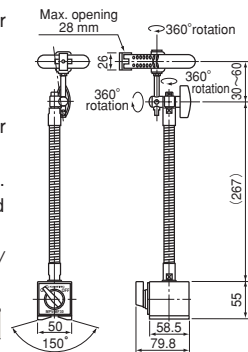
Suitable for auxiliary clamping of parts or tools during machining or assembling work.
Also usable for holding a mirror, penlight, sensor, etc.

[Features]

- A diversified design of metal parts at the tip makes this holder usable in a very wide range of application.
In addition to the main clamper, a $\phi 6$ shaft and $\phi 8$ shaft are mountable. Tip of flexible tube: M6 male thread, tip of pole: M5 female thread. Parts replaceable with other parts that match these thread sizes.
- The use of a magnetic holder base that is equipped with an ON/OFF function facilitates mounting and demounting.

Model	Holding Power	Allowable Weight to Hold (Ref.)	Mass
MPV-MF30	784N (80kgf)	0.6kg/1.32 lb	1.4kg/3.08 lb

※The clamper is sold with pole B also.
※The clamper can clamp workpieces of 28 mm or less in width.



Parts available individually

Model MPV-CL FLEXIBLE CLAMP

Parts available individually

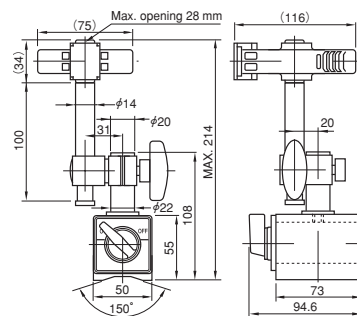


[Application]

Suitable for soldering of circuit boards of electric parts.
Suitable for holding parts during assembly.
Suitable for wiring as it can clamp electric cables.

[Features]

- The employment of a powerful ON/OFF selectable magnetic holder facilitates mounting on an iron work table and work table of machine tools.
- The clamp part is equipped with a tough plastic clamper and can be tilted freely.
- The clamper opens 28 mm maximum and can be moved up and down in a range of about 90 mm.



Model	Holding Power	Mass
MPV-CL30	1000N (100kgf)	2.7kg/6.0 lb

※The holding power is based on a test piece of SS400, 10 mm thick, ground surface.

Model MPV-F FLEXIBLE VICE

Parts available individually

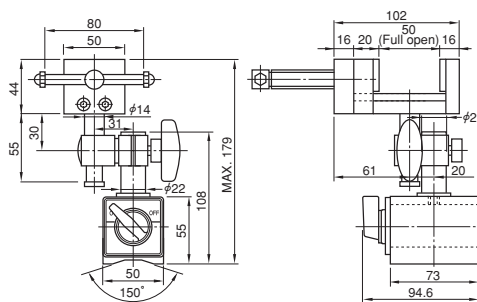


[Application]

Suitable for temporarily holding workpieces during assembly. Also suitable for such jobs as hand filing and drilling and tapping of nonmagnetic materials.

[Features]

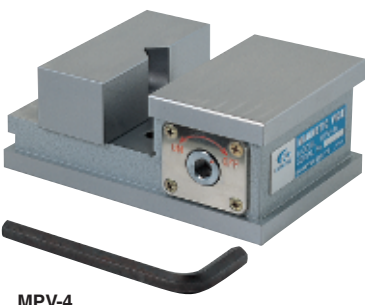
- The employment of a powerful ON/OFF selectable magnetic holder facilitates mounting on an iron work table and work table of machine tools.
- The vice can be tilted freely to secure workpieces according to their shapes and machining directions.
- The plates on the workpiece clamping parts are made of nylon to hold non-flat workpieces strongly.



Model	Holding Power	Mass
MPV-F50A	1000N (100kgf)	2.7kg/6.0 lb

※The holding power is based on a test piece of SS400, 10 mm thick, ground surface.

Model MPV MAGVICE*

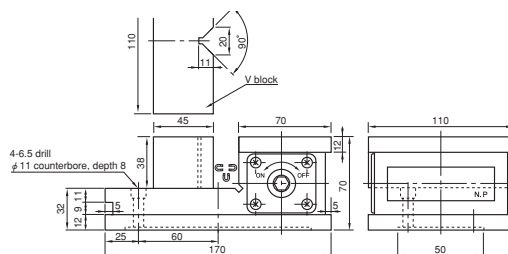


[Application]

Suitable for securing irregularly shaped workpieces or tapered workpieces and for machining end faces of round bars and flat workpieces.

[Features]

- The force to secure a workpiece is generated by a magnetic force. Thus, unlike mechanical clamping, no undue force is applied. (Nonmagnetic workpieces cannot be held.)
- The select handle can be operated on both sides.
- Can be mounted on a magnetic chuck on a machine tool.



■ Magnetic force: Side slip resistance is 575 N (57.5 kgf) for iron square bars of 30 mm × 30 mm × 130 mm and 480 N (48 kgf) for iron round bars of $\phi 30 \times 130$ mm thanks to the powerful built-in permanent magnet. Thus, the MAGVICE works well in grinding operations also.

■ Mass: 7.3 kg/ 16.01 lb

ELECTROMAGNETIC CHUCKS
ELECTROMAGNETIC CHUCK CONTROLLERS
PERMANENT CHUCKS
PERMANENT CHUCKS
BLOCKS FOR MC
VACUUM CHUCKS
PROMELTA* SYSTEM
SINE BAR CHUCKS
BLOCKS, HOLDERS, MINI CHUCKS
HOLDING TOOLS
MEASURING TOOL HOLDERS
MAGNETIC HOLDERS
MAGNETIC TOOLS