

MEASURING TOOL HOLDERS

Model MB-BRB BORER BASE*

Hardness of V-face increased for longer life!

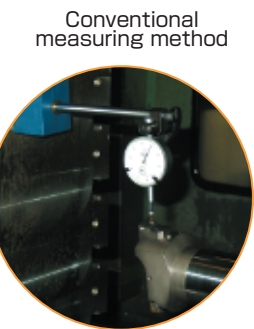
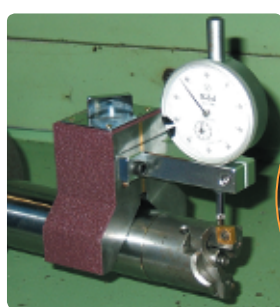
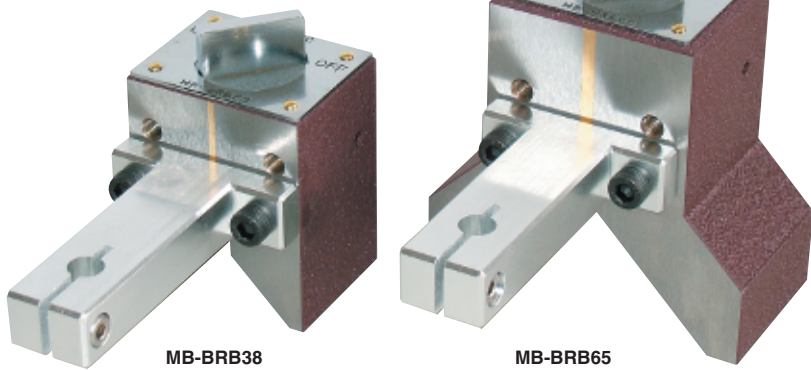
[Application]

Useful for measuring the projected amount of a cutter mounted on the arbor of a boring machine with a dial gage to locate the cutter precisely.

[Features]

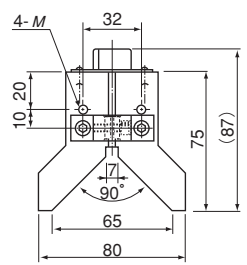
- The attractive face (V-face) has been hardened and therefore is less likely to be scratched and highly wear resistant.
- The squareness of the face to secure the dial gage bracket to the V-face is within 5 μm.
- The dial gage mounting bracket for the φ8 stem comes as a standard accessory. The base can be put in use immediately after purchase.
- The dial gage mounting bracket height is selectable. (2 stages)

Mounting bracket as standard accessory

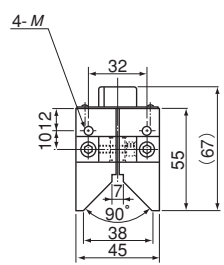


Conventional measuring method

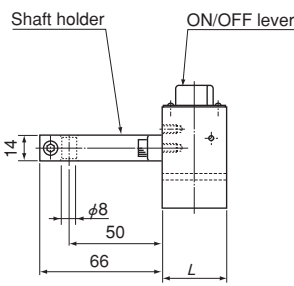
Mountable directly on boring bar



<MB-BRB65>



<MB-BRB38>



[mm (in)]

Model	Dimensions				Holding Part Dimensions		Max. Holding Power	Max. Dia. to Hold	Mass
	Width	Length	Height	M	Width	Angle			
MB-BRB38	45 (1.77)	35 (1.37)	55 (2.16)	M5 (0.19) thread, depth 8 (0.31)	38 (1.49)	90°	137N (14kgf)	φ 45 (1.77)	0.6kg / 0.13 lb
MB-BRB65	80 (3.15)	40 (1.57)	75 (2.95)		65 (2.55)		196N (20kgf)	φ 80 (3.15)	1.1kg / 2.4 lb

The max. holding power is based on a test piece of φ 38 round steel bar (SS400, Ra = 1.6).

Model MB-S BORER BASE*

[Application]

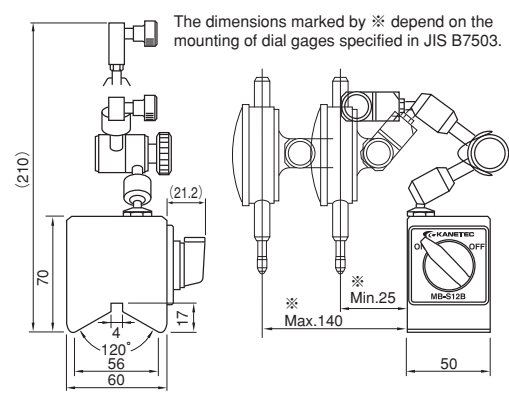
Useful for measuring the projected amount of a cutter mounted on the arbor of a boring machine with a dial gage to locate the cutter precisely.

[Features]

- The measuring tool holding arm can be freely locked by one-step tightening, which makes this base suitable for any length between its mounting position and the tip of the cutter.
- Since a magnetic force is used for holding, the dial gage is held firmly even if it is mounted inclined. Further, the magnetic force can be turned on and off for easy mounting and demounting.
- The dial gage is mounted by tightening the bracket with an M6 bolt.



MB-S12B



[mm (in)]

Model	Holding Power	Arbor Diameter	Holding Part Dimensions		Mass
			Width	Angle	
MB-S12B	250N (25kgf) on φ 70 (2.75)	φ 15 (0.59) - 120 (4.72)	56 (2.20)	120°	1.3kg / 2.8 lb

ELECTROMAGNETIC CHUCK CHUCKS
MAGNETIC CHUCKS
PERMANENT MAGNETIC CHUCKS
PERMANENT MAGNETIC CHUCKS
BLOCKS FOR MC
VACUUM CHUCKS
PROMELTA*
SINE BAR CHUCKS
BLOCKS, HOLDERS, MINI CHUCKS
HOLDING TOOLS
MEASURING TOOL HOLDERS
MAGNETIC HOLDERS
MAGNETIC TOOLS