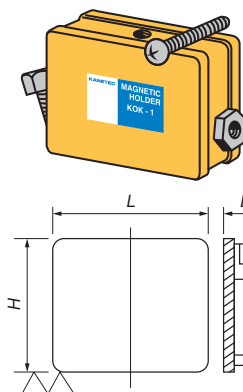


Model KOK ALL-CATCH



[Application]

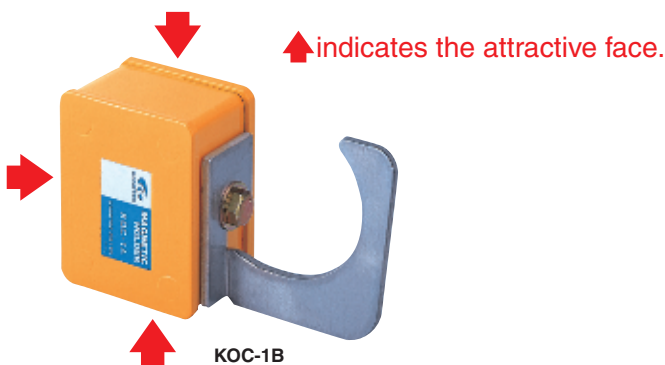
Versatile holders having four attractive faces to meet various applications. These holders also have threaded holes to enable fixtures to be mounted for coupling of holders.

[mm (in)]

| Model | Holding Power | Dimensions | | | Tapped Hole | Mass |
|--------|---------------|-------------|-----------|-----------|--|----------------|
| | | B | L | H | | |
| KOK-1 | 200N (20kgf) | 17.0 (0.66) | 50 (1.96) | 40 (1.57) | M5 (0.19) x 0.8 (0.03) Depth, 5 (0.19) | 150g / 0.33 lb |
| KOK-2A | 300N (30kgf) | 27.6 (1.08) | | | | 280g / 0.61 lb |

※The holding power is based on a test piece of SS400, 10 mm thick, ground surface.

Model KOC CABLE HANGER



[Application]

Very useful for holding welding cables and for putting jigs and fixtures in order on work sites of shipbuilding, iron and steel manufacturing, bridge building, canneries and similar operations.

[Features]

- Strong holding power capable of destacking stacked thin iron sheets.
- With the lateral sliding resistance of 80N (8kgf), this hanger generates sufficient holding power as a hanger.

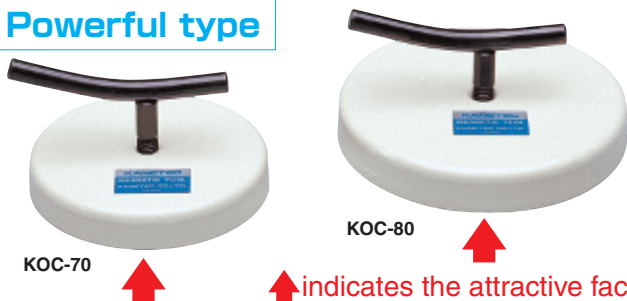
[mm (in)]

| Model | Holding Power | Dimensions | | | Mass |
|--------|---------------|------------|-------------|-----------|----------------|
| | | B | L | H | |
| KOC-1B | 300N (30kgf) | 50 (1.96) | 27.6 (1.08) | 40 (1.57) | 400g / 0.88 lb |

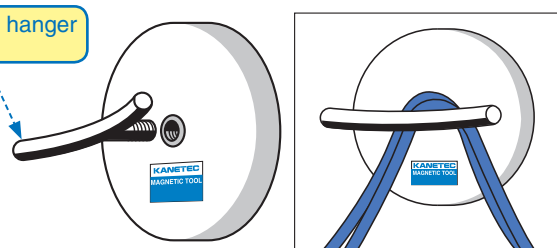
※The holding power is based on a test piece of SS400, 10 mm thick, ground surface.
 ※The hook part is 87 mm high.

Model KOC MAGHANGER*

Powerful type



Dedicated hanger included



[Application]

Powerful magnetic hanger holders most suitable for cabling and temporary wiring work on sites. Applicable to a wide range of uses as a hanger, since these hangers powerfully attach to thin steel sheets, steel lockers, refrigerators, etc.

[mm (in)]

| Model | Holding Power | Dimensions | Grip Mounting Thread | Mass |
|--------|---------------|-------------------------|---------------------------------------|----------------|
| KOC-70 | 130N (13kgf) | φ 66 (2.59) x 11 (0.43) | M6 (0.23) x 1.0 (0.03) depth 5 (0.19) | 210g / 0.46 lb |
| KOC-80 | 300N (30kgf) | φ 80 (3.15) x 13 (0.51) | | 330g / 0.72 lb |

※The holding power is based on a test piece of SS400, 10 mm thick, ground surface.

Model WK POWERFUL MAGNETIC HOLDER



[Application]

Suitable as holding tools for tentative installation and tack welding on such work sites as construction, bridge, shipbuilding and piping.

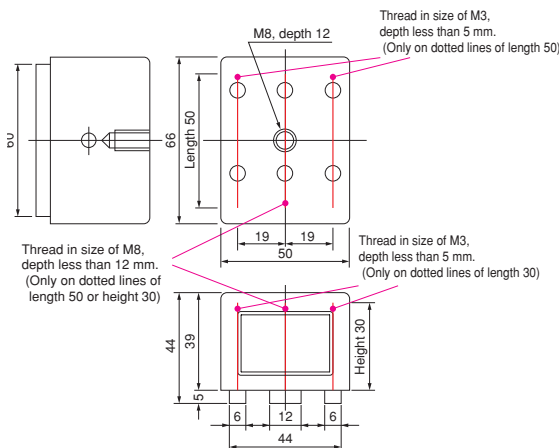
[Features]

- There are three faces where additional machining (such as drilling) can be done. (Refer to the dimension drawing)
- The exterior is made of aluminum to prevent adhesion of iron powder to the top and side faces.
- Model WK-TP has a construction that is highly resistant to heat.

↑ indicates the attractive face.

| Model | Heat Resistance | Holding Power | Mass |
|-------|-----------------|----------------|------------------|
| WK-P | 60°C | 1000N (100kgf) | 0.75kg / 1.65 lb |
| WK-TP | 180°C | | |

※The holding power is based on a test piece of SS400, 10 mm thick, ground surface.



ELECTROMAGNETIC CHUCKS
 CHUCK CONTROLLERS
 PERMANENT ELECTROMAGNETIC CHUCKS
 PERMANENT ELECTROMAGNETIC CHUCKS
 BLOCKS FOR MC
 VACUUM CHUCKS
 PROMELTA* SYSTEM
 SINE BAR CHUCKS
 BLOCKS, HOLDERS, MINI CHUCKS
 HOLDING TOOLS
 MEASURING TOOL HOLDERS
 MAGNETIC HOLDERS
 MAGNETIC TOOLS