

Model EMA WELDING JIG FOR ONE FACE WELDING

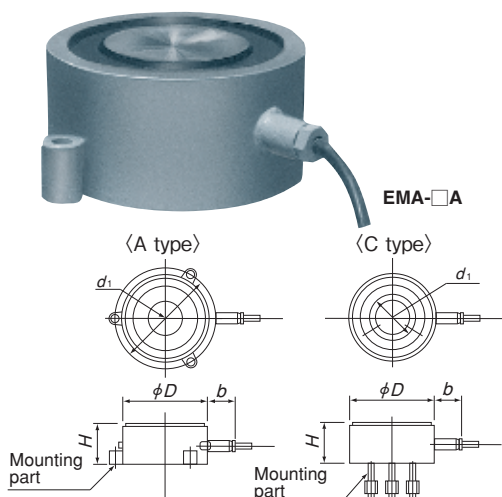
Rectifier required additionally

[Application]

Jigs developed for automatic welding of steel plates to hold steel plates and backing materials. These jigs can be used to hold cut-out pieces during EPM welding operations, to straighten workpieces and to secure stacked steel plates during fusing of stacked steel plates.

[Features]

- Holding and releasing workpieces can be controlled electrically.
 - Workpieces are secured to a welding frame by a strong magnetic force and therefore warping of steel plates due to welding heat can be prevented.
 - Drip-proof construction for outdoor operations. Highly resistant to impact and heat.
- ※ The rectifier is of special specifications according to the number of magnets used.



Model	Holding Power		Dimensions					Power Source		Working Rate	Mass
	Steel Plate 20mm thick	Steel Plate 50mm thick	D	H	d ₁	b	Mounting hole	Voltage	Current		
EMA-25-A	20kN (2000kgf)	24kN (2400kgf)	245 (9.64)	100 (3.93)	290 (11.4)	70 (2.75)	3-φ21 (0.82)	200 VDC	1.0 A	100% ED	30kg/ 66.1 lb
EMA-25-C					150 (5.90)		3-M16 (0.62)				
EMA-26-A	21kN (2100kgf)	36kN (3600kgf)	255 (10.0)	120 (4.72)	305 (12.0)	4-φ26 (1.02)	1.4 A				
EMA-30-A	25kN (2500kgf)	50kN (5000kgf)	296 (11.6)	150 (5.90)	340 (13.3)	3-φ23 (0.90)					
EMA-30-C					200 (7.87)	3-M20 (0.78)	1.75A		65kg/ 143 lb		

Model CEM ELECTROMAGNET FOR CHAMFERING

Rectifier required additionally

[Application]

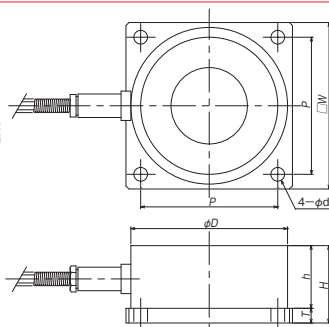
Suitable for securing workpieces during light duty work such as chamfering.

[Features]

- The periphery or four faces of workpieces can be worked during chamfering, for example, in one chucking to improve work efficiency.
- Damage to workpieces by mechanical clamping can be prevented.



CEM-16



[mm (in)]

Model	Max. Holding Power	Dimensions							Rated Voltage	Rated Current	Working Rate	Mass
		φD	h	T	H	P	φd	□W				
CEM-16	1000kgf	160 (6.29)	64 (2.51)	15 (0.59)	79 (3.11)	140 (5.51)	14 (0.55)	170 (6.69)	90 VDC	0.4 A	100% ED	Approx. 14 kg/30.8 lb
CEM-23	2000kgf	230 (9.05)	76 (2.99)	20 (0.78)	96 (3.77)	200 (7.87)	22 (0.86)	250 (9.84)		0.7 A		

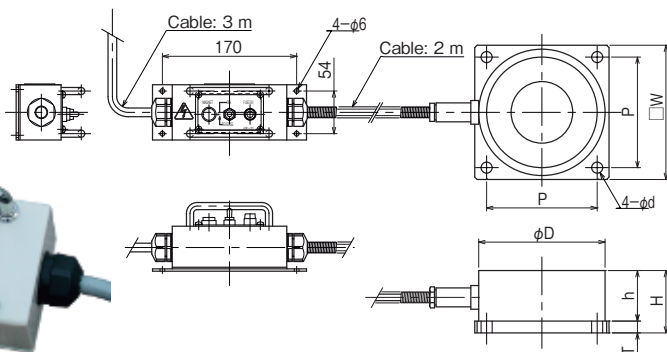
※ Applicable rectifiers: RH-M102C/M105B/M205B/M210B.

Model CEM-SR ELECTROMAGNET WITH RECTIFIER FOR CHAMFERING

Rectifier added to electromagnetic CEM for chamfering!



CEM-23SR



[mm (in)]

[Application]

Suitable for securing workpieces during light duty work such as chamfering.

[Features]

- The built-in compact rectifier eliminates a need of a power source board, requiring simple wiring only.
- The magnet specifications are all the same as Model CEM.

Model	Max. Holding Power	Dimensions							Input	Power Consumption	Working Rate	Mass
		φD	h	T	H	P	φd	□W				
CEM-16SR	1000kgf	160 (6.29)	64 (2.51)	15 (0.59)	79 (3.11)	140 (5.51)	14 (0.55)	170 (6.69)	Single-phase, 100 VAC	41W	100% ED	14kg/ 30.8 lb
CEM-23SR	2000kgf	230 (9.05)	76 (2.99)	20 (0.78)	96 (3.77)	200 (7.87)	22 (0.86)	250 (9.84)				28kg/ 61.7 lb



Precautions for use

These holders cannot be used for work where heat is applied for long hours. If the magnet is subjected to high temperature, its magnetic force will drop or be lost suddenly, causing the workpiece to come off the attractive face. Exercise caution.

MAGNETIC TOOLS & EQUIPMENT
FOR WELDING OPERATION

LIFTING
MAGNET

MAGBORE

CHIP & SLUDGE
CONVEYANCE EQUIPMENT

MAGNETIZER AND
ENVIRONMENTAL
EQUIPMENT

MAGNETIC EQUIPMENT
FOR CONVEYANCE
DEMAGNETIZER

MAGNETIC
SEPARATORS

POWERFUL MAGNETIC
SEPARATORS

MEASURING
INSTRUMENTS

MEASURING
TOOLS

MAGNETIC
MATERIALS