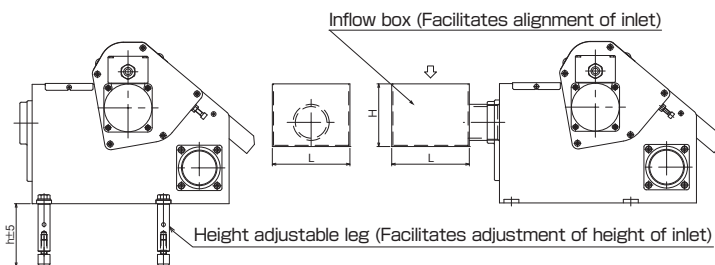


Model MS MAGCLEAN* HEIGHT ADJUSTABLE LEGS/INFLOW BOX (Optional)



[Application]

An optional unit to enable the Magclean to be mounted on a machine easily. [mm (in.)]

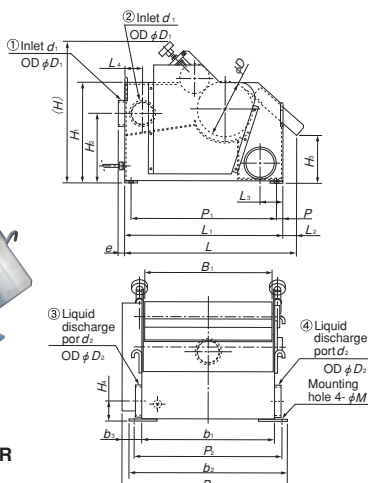
Model			Dimensions		
Standard	High mag. force	Super high mag. force	h	L	H
MS- 2Fa	MS- 2FaH	MS- 2FHP	105(4.13)	110(4.33)	105(4.13)
MS- 4Fa	MS- 4FaH	MS- 4FHP		130(5.11)	
MS- 6Fa	MS- 6FaH	MS- 6FHP		150(5.90)	
MS- 8Fa	MS- 8FaH	MS- 8FHP	155(6.10)	170(6.69)	115(4.52)
MS-12Fa	MS-12FaH	MS-12FHP		190(7.48)	

*For MS-18Fa/FaH/FHP and MS-24Fa/FaH/FHP, please contact us.

Model MS-BS MAGCLEAN*



MS-24BS-BR



[Application]

Suitable for removal of iron powder from grinding fluid. If you plan to use this model for washing purpose (fresh water and other liquids), please contact us.

Model designation of MS-BS

When ordering MS-BS Series, be sure to specify the direction of the inlet and liquid discharge port in the model designation as follows:

MS-24BS-B L

Direction of liquid discharge port

L: Left when viewed from the sludge discharge direction. (Liquid discharge port ③ in the following figure)
R: Right when viewed from the sludge discharge direction. (Discharge port ④ in the following figure)

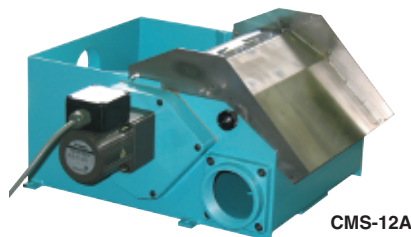
Direction of the inlet

B: Backside (Inlet ① in the following figure)
R: Right when viewed from the sludge discharge direction. (Inlet ② in the following figure)

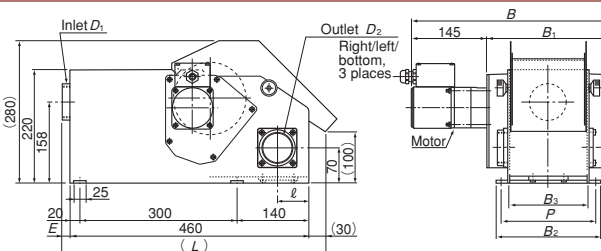
Model	Inlet Direction	Liquid Discharge Direction	Processing Capacity	Power Source	Motor	Dimensions																				Mass													
						L	B	H	L ₁	L ₂	L ₃	L ₄	e	P	P ₁	P ₂	B ₁	b ₁	b ₂	b ₃	H ₁	H ₂	H ₃	H ₄	M		D	D ₁	d ₁	D ₂	d ₂								
MS-24BS-BL	①	③	240L/min	90W	3-phase 200 VAC/50/60 Hz	670	645	534	620					25	25	570	572	495	515	615	80	386	268	189	77	17	214	102	PS-3	127	PS-4	115kg/253 lb							
MS-24BS-BR	②	④				(26.3)	(25.3)	(21.0)	(24.4)			90				(0.98)	(0.98)	(22.4)	(22.5)	(19.8)	(20.2)	(24.2)	(31.5)	(15.2)	(10.5)	(7.44)	(3.03)	(0.66)	(8.42)	(4.01)		(5.00)							
MS-24BS-RL	①	③														70																							
MS-24BS-RR	②	④														(2.75)																							
MS-36BS-BL	①	③	360L/min	100W	3-phase 200 VAC/50/60 Hz	830	839	670	780					35																									
MS-36BS-BR	②	④				(32.6)	(33.0)	(26.3)	(30.7)			50				(1.37)																							
MS-36BS-RL	①	③														80																							
MS-36BS-RR	②	④														(3.15)																							
MS-50BS-BL	①	③	500L/min	100W	3-phase 200 VAC/50/60 Hz	1139	1139	830	780					35																									
MS-50BS-BR	②	④				(44.8)	(44.8)	(32.6)	(30.7)			120				(1.37)																							
MS-50BS-RL	①	③														90																							
MS-50BS-RR	②	④														(3.54)																							

*The numbers in "Inlet Direction" and "Liquid Discharge Direction" correspond to No. ① to ④ in the figures above. Be sure to check the directions.

Model CMS CHIP MAGCLEAN*



CMS-12A



[Application]

This Chip Magclean is designed to remove/collect chips in coolant that is discharged from cutting operations by machine tools.

[Features]

- The employment of a magnetic drum with special magnetic pole array ensures a high rate of collection.
- The newly designed scrapper improves performance to separate and remove chips from the magnetic drum.
- The expanded discharge space helps stable discharge. The higher side wall helps prevent overflowing.
- The overall height has been reduced by 80 mm by changing the motor mounting position, enabling the Chip Magclean to be mounted in places where it could not be mounted.

Model	Processing Capacity	Power Source	Motor	Dimensions										Mass
				L	B	E	ℓ	B ₁	B ₂	B ₃	P	D ₁	D ₂	
CMS-4A	40L/min	3-phase 200 VAC/220 VAC, 50/60 Hz	25W	505(19.8)	380(14.9)	20(0.78)	70(2.75)	234(9.21)	200(7.87)	152(5.98)	180(7.08)	PS-2	PS-2	22kg/ 48 lb
CMS-8A	80L/min			430(16.9)		284(11.1)	250(9.84)	202(7.95)	230(9.05)	27kg/ 59 lb				
CMS-12A	120L/min			515(20.2)	580(22.8)	25(0.98)	60(2.36)	434(17.0)	400(15.7)	352(13.8)	380(14.9)			PS-2·1/2

MAGNETIC TOOLS & EQUIPMENT FOR WELDING OPERATION
 LIFTING MAGNET
 MAGBORE*
 CHIP & SLUDGE CONVEYANCE EQUIPMENT
 MAGNETIZER AND ENVIRONMENTAL EQUIPMENT
 DEMAGNETIZER
 MAGNETIC EQUIPMENT FOR CONVEYANCE
 MAGNETIC SEPARATORS
 POWERFUL MAGNETIC SEPARATORS
 MEASURING INSTRUMENTS
 MEASURING TOOLS
 MAGNETIC MATERIALS