

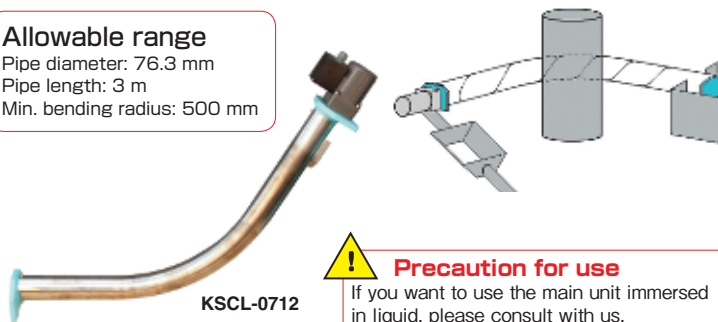
CHIP & SLUDGE CONVEYANCE EQUIPMENT

Model **KSCL** NONLINEAR SPIRAL MAGNETIC CONVEYOR

Flexible chip transfer! Lean layout to keep work environment neat! Shapes that fit installation space!

Allowable range

Pipe diameter: 76.3 mm
Pipe length: 3 m
Min. bending radius: 500 mm



Caution for use
If you want to use the main unit immersed in liquid, please consult with us.

[Application]

This model is suitable for places where the linear type KSC is difficult to install.

[Features]

- The bending shape has been realized by a special construction.
- This model can be installed in a very small space such as inside a machine.
- The layout where two linear type units are used to circumvent the existing facilities can be replaced by one unit.

■KSCL-0712 specifications

Applicable pipe diameter : 76.3 mm, Min. bending radius: 500 mm
Max. pipe length : 3 m
Power source : 3-phase 200 VAC/220 VAC, 50/60 Hz, 40 W

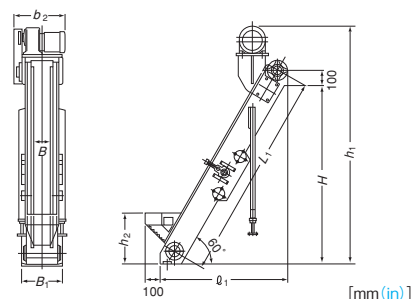
Model **MCO** MAGNETIC CHIP CONVEYOR

[Application]

This model is designed to effectively attract, convey and remove chips produced from machine tools by a magnetic force while letting oil sticking to chips drop naturally. (This model is suitable for chips shorter than 60 mm.)

[Features]

- As chips are held by magnets, they can be conveyed on a sharp inclination. This feature enables it to shorten the line and reduce the floor area, thus contributing to effective three-dimensional utilization of factory space.
- Fine chips can be attracted and oil can be removed efficiently.
- The optimum design by use of high-performance permanent magnets and little attenuation of the magnetic force. Simplified mechanism for trouble-free operation.



Model	Conveying Speed	Power Source	Motor	Dimensions							Mass	
				B	L ₁	H	B ₁	b ₂	l ₁	h ₁		h ₂
MCO-1515A	Approx. 8/9.5 m/min (50/60Hz)	3-phase 200 VAC	400W	150 (5.90)	1500 (59.0)	1270 (50.0)	284 (11.1)	375 (14.7)	925 (36.4)	1620 (63.7)	350 (13.7)	140kg/308 lb
MCO-1520A					2000 (78.7)	1700 (66.9)			1180 (46.4)	2060 (81.0)		155kg/341 lb
MCO-1530A					3000 (118.1)	2570 (101.2)			1675 (65.9)	2905 (114.4)		190kg/418 lb
MCO-2015A				200 (7.87)	1500 (59.0)	1270 (50.0)	334 (13.1)	425 (16.7)	925 (36.4)	1620 (63.7)		150kg/330 lb
MCO-2020A					2000 (78.7)	1700 (66.9)			1180 (46.4)	2060 (81.0)		175kg/385 lb
MCO-2030A					3000 (118.1)	2570 (101.2)			1675 (65.9)	2905 (114.4)		210kg/463 lb
MCO-2515A				260 (10.2)	1500 (59.0)	1270 (50.0)	394 (15.5)	475 (18.7)	925 (36.4)	1620 (63.7)		160kg/352 lb
MCO-2520A					2000 (78.7)	1700 (66.9)			1180 (46.4)	2060 (81.0)		190kg/418 lb
MCO-2530A					3000 (118.1)	2570 (101.2)			1675 (65.9)	2905 (114.4)		230kg/507 lb

Model **MCOL** MAGNETIC CHIP CONVEYOR



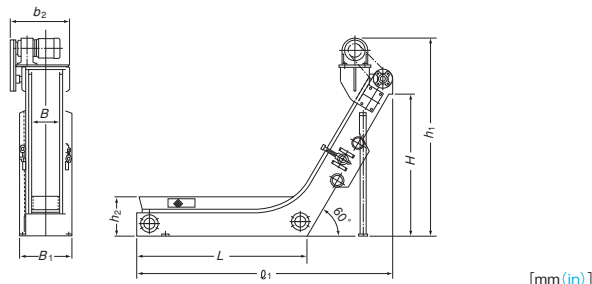
Powerful type is added to the series. For special sizes, please contact us.

[Application]

This model is installed in front of a tank to which cutting fluid flows from a machine tool to attract (pick up) chips by a magnetic force in cutting fluid to remove and convey them. (This model is suitable for chips shorter than 60 mm.)

[Features]

- A model that plays two roles of horizontal conveyor and inclined conveyor by one unit.
- Can be installed directly on an oil tank or machine tool.



Model	Conveying Speed	Power Source	Motor	Dimensions							Mass	
				B	L ₁	H	B ₁	b ₂	l ₁	h ₁		h ₂
MCOL-1510A	Approx. 8/9.5m/min (50/60Hz)	3-phase 200 VAC	400W	150 (5.90)	1000 (39.7)	1000 (39.7)	284 (11.1)	375 (14.7)	1600 (62.9)	1390 (54.7)	275 (10.8)	160kg/352 lb
MCOL-1515A					1500 (59.0)				2100 (82.6)			190kg/418 lb
MCOL-2010A					2000 (78.7)				2100 (82.6)			175kg/385 lb
MCOL-2015A				1500 (59.0)	2100 (82.6)		220kg/485 lb					
MCOL-2510A				260 (10.2)	1000 (39.7)		394 (15.5)	475 (18.7)	1600 (62.9)			200kg/440 lb
MCOL-2515A				1500 (59.0)	2100 (82.6)		250kg/551 lb					
MCOL-H2010A	Approx. 10/12 m/min (50/60Hz)			200 (7.87)	1000 (39.7)	1050 (41.3)	348 (13.7)	473 (18.6)	1664 (65.5)	1565 (61.6)	283 (11.1)	180kg/396 lb
MCOL-H2015A					1500 (59.0)				2164 (85.1)			225kg/496 lb