

Model CS FILTRATION SYSTEM WITH CYCLONE SEPARATOR



CS-MS-4T

Increased rate of removing impurities in coolant by magnet & cyclone!

[Application]

Suitable for efficiently collecting valuable sludge of weak magnetic and nonmagnetic materials.

[Features]

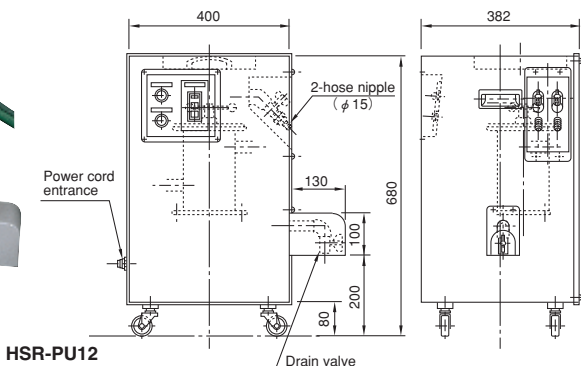
- The cyclone separator enables it collect nonmagnetic materials.
- Collected materials can be dehydrated by the dehydration function.
- A filter collection type dehydration container that is easy to handle is employed.
- The twin-tub type tank construction reduces the amount of impurities that enter the clean tank.

| Model | Processing Capacity | Dimensions | | | Tank Capacity | Power Source | Output | | | Remarks |
|----------|---------------------|------------|--------|--------|---------------|-----------------------------------------------------|--------------|-----------------|-----------------------------|------------------------|
| | | width | Depth | Height | | | Cyclone pump | Supply pump | Magclean | |
| CS-MS-4T | 40L/min | 1200 | 800 | 1300 | 180L | 3-phase 200 VAC, 50/60 Hz 3-phase 220 VAC, 60 Hz | 200/220VAC | 3-phase 200 VAC | 3-phase 200 VAC 50/60Hz 25W | Magclean included |
| CS-4T | | (47.2) | (31.5) | (51.1) | | | 0.75Kw | 50/60Hz 100W | - | Magclean not included. |

[mm (in.)]

Model HSR-PU MAGNETIC PREFILTER WITH PUMP

Extended Life! Revolution in Filtering for Wire Electric Discharge Machines!



HSR-PU12

[Application]

This prefilter collects fine iron powder in machining fluid during fluid circulation inside the machining liquid tank of wire electric discharge machines to prolong the service life of filters. This can also be used for honing machines and hydraulic circuits (under no pressure).

[Features]

- This prefilter has a pump and therefore can be started simply by connecting hoses (two hoses) to a machining liquid tank. This can be installed in any place and handled easily.
- The powerful magnetic force of a rare earth magnet improves the sludge collecting rate.
- The safe construction with the powerful magnet section secured firmly facilitates cleaning.
- The built-in integrating timer tells when to clean.

■ Model : HSR-PU12 ■ Processing amount: Approx. 1.5 liters/min.
■ Pump rating: 3-phase, 200/220 VAC, 50/60 Hz, 200W ■ Weight: Approx. 60 kg

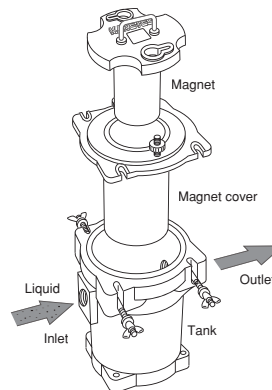
Caution: For use of the prefilter for kerosene machining fluids, please contact us.

Model HS MAGNETIC PREFILTER



HS-17

Magnet unit with sludge adhering pulled out of the tank.



[Application]

This prefilter removes fine iron powder from machining liquid discharged from a wire electric discharge machine (WEDM). This can also be used for honing machines and hydraulic circuits (under no pressure).

Install this prefilter at a point between a wire electric discharge machine and a pump unit.

[mm (in.)]

| Model | Dimensions | Hose Connection | Mass |
|-------|--------------------------------------------|-----------------|------------|
| HS-17 | 175 (6.88) D × 200 (7.87) W × 230 (9.05) H | 1 1/2 | 12kg/26 lb |

※Hose nipple 1-1/2 (telescopic, OD φ38) is optional.

[Features]

- By roughly removing fine iron powder from machining fluid with the powerful magnet as a pretreatment, the service life of the paper filter, for example, becomes two times longer.
- The prefilter collects impurities as well as fine iron powder. Consequently, the paper filter to use may be of coarser type than that of the straight inflow.
- The duplex construction facilitates removal of fine iron powder.

MAGNETIC TOOLS & EQUIPMENT
FORMING OPERATION

LIFTING
MAGNET

MAGBORE

CHIP & SLUDGE
CONVEYANCE EQUIPMENT

ENVIRONMENTAL
EQUIPMENT

MAGNETIZER AND
DEMAGNETIZER

MAGNETIC EQUIPMENT
FOR CONVEYANCE

MAGNETIC
SEPARATORS

POWERFUL MAGNETIC
SEPARATORS

MEASURING
TOOLS

MEASURING
INSTRUMENTS

MAGNETIC
MATERIALS