

POWERFUL MAGNETIC SEPARATORS PCMBD-A / PCMB-S / PCMB-K

Model PCMBD-A SUPER POWERFUL MAGNETIC BAR (DOUBLE-PIPE)



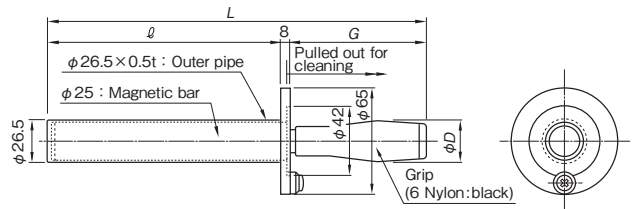
PCMBD-A20

[Application]

Most suitable for cleaning places where a relatively large amount of iron powder, etc. is mixed.

[Features]

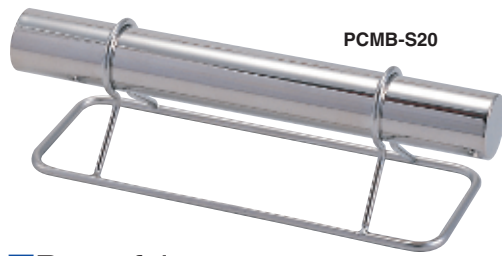
- Since these bars are of double-pipe type, attracted iron powder smoothly drops when the magnetic bar is pulled out.
- The outer pipe and the magnetic bar have a flange. When the magnetic bar is housed, the two flanges become one piece to prevent intrusion of foreign matter to the inside of the magnetic bar and to prevent the magnetic bar from coming out.
- The magnetic bar has an easy-to-hold plastic grip.



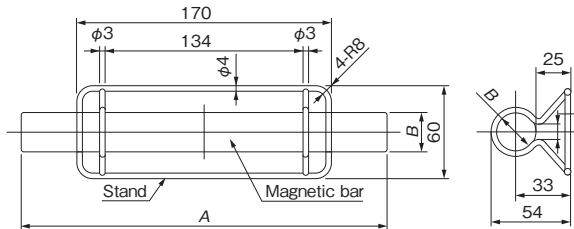
Model	Surface Material	Surface Finish	Surface Max. Magnetic Flux Density	Working Temp. Upper Limit	Dimensions				Mass
					L	ℓ	G	D	
PCMBD-A13					216 (8.50)	125 (4.92)	83	24	0.8kg/ 1.7 lb
PCMBD-A20	SUS 304	#400 buffed	0.8 T (8000 G) min.	80°C (176°F)	285 (11.2)	194 (7.63)	83 (3.26)	24 (0.94)	1.1kg/ 2.4 lb
PCMBD-A25					352 (13.8)	244 (9.60)	100	28	1.3kg/ 2.8 lb
PCMBD-A30					403 (15.8)	295 (11.6)	100	28	1.5kg/ 3.3 lb

※A type having a surface maximum magnetic flux density of 0.95 T (9500 G) is also available. (Optional)

Model PCMB-S SANITARY MAGNETIC BAR WITH STAND



PCMB-S20



[Features]

The sanitary magnetic bar (PCMB) is provided with a stand. Can be installed in a liquid tank for collection and removal of iron particles.

Powerful type

Model	Dimensions		Material	Surface Finish		Built-in Permanent Magnet	Surface Max. Magnetic Flux Density	Working Temp. Upper Limit	Mass
	A	B		Magnetic bar	Stand				
PCMB-S20	194 (7.63)	φ 25 (0.98)	SUS304	#400 buffed	Electrolytic polishing	Nd rare earth type Property value 1.2 T (12,000 G)	0.8T (8000G)	80°C (176°F)	0.6kg/1.32 lb
PCMB-S25	244 (9.60)								0.65kg/1.43 lb
PCMB-S30	295 (11.6)								0.7kg/1.50 lb

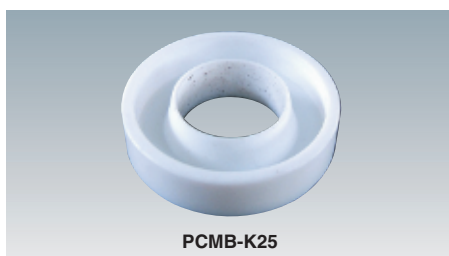
Heat-resistant powerful type

Model	Dimensions		Material	Surface Finish		Built-in Permanent Magnet	Surface Max. Magnetic Flux Density	Working Temp. Upper Limit	Mass
	A	B		Magnetic bar	Stand				
PCMB-TS20	194 (7.63)	φ 25 (0.98)	SUS304	#400 buffed	Electrolytic polishing	Sm rare earth type Property value 1.1 T (11,000 G)	0.8T (8000G)	240°C (464°F)	0.6kg/1.32 lb
PCMB-TS25	244 (9.60)								0.65kg/1.43 lb
PCMB-TS30	295 (11.6)								0.7kg/1.50 lb

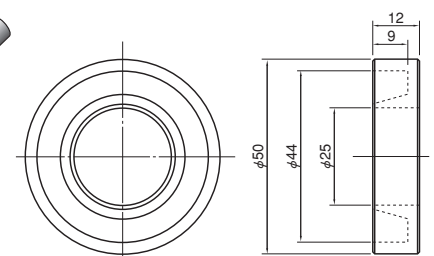
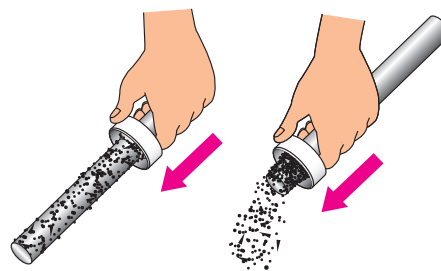
Super powerful type

Model	Dimensions		Material	Surface Finish		Built-in Permanent Magnet	Surface Max. Magnetic Flux Density	Working Temp. Upper Limit	Mass
	A	B		Magnetic bar	Stand				
PCMB-AS20	194 (7.63)	φ 25 (0.98)	SUS304	#400 buffed	Electrolytic polishing	Nd rare earth type Property value 1.35 T (13,500 G)	1T (10000G)	80°C (176°F)	0.6kg/1.32 lb
PCMB-AS25	244 (9.60)								0.65kg/1.43 lb
PCMB-AS30	295 (11.6)								0.7kg/1.50 lb

Model PCMB-K CLEANER TO REMOVE IRON POWDER ON MAGNETIC BAR



PCMB-K25



[Application]

A cleaner to remove iron powder on a sanitary magnetic bar.

[Features]

- A groove is provided to receive iron powder so that it does not scatter.
- When this is installed on each end of a sanitary magnetic bar, they serve as a stand also.

Model	Casing (Material)	Applicable Magnetic Bar Dia.
PCMB-K25	Teflon	φ 25 (0.98)