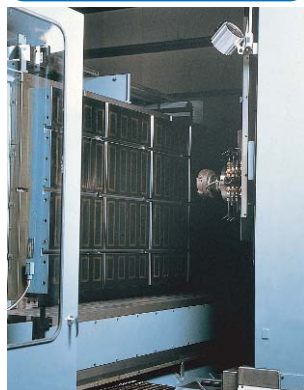


## Model KEZX SUPER POWERFUL T-SLOT TYPE

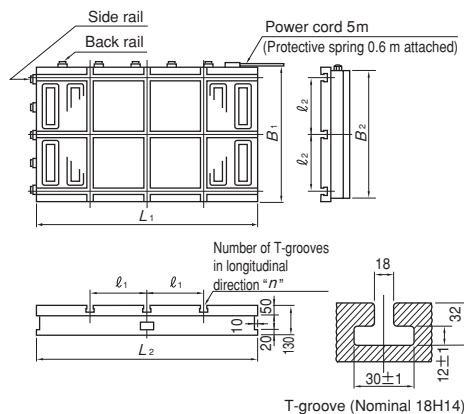


KEZX-50100A

### An example of vertical usage



### Chuck controller required additionally



T-groove (Nominal 18H14)

### [Application]

Super powerful electromagnetic chuck having T-slots for heavy duty cutting. A range of workpieces that can be held has been expanded by a combination of a quick working magnet system and clamps by use of T-grooves.

As the mechanical clamping mechanism is incorporated, irregular workpieces and nonmagnetic workpieces that can not be held by normal electromagnetic chucks can be held easily. When clamping a nonmagnetic workpiece, such work as dismounting the electromagnetic chuck from the machine table can be eliminated.

Model KEZX comes both in the flat type and vertical type.

### [Features]

- Super powerful electromagnetic chucks specially designed for heavy duty cutting.
- Small and irregular-shaped workpieces can be held firmly by a combination of a magnet and clamping by use of T-slots.
- Since a nonmagnetic workpiece can be secured by clamping by use of T-slots, no such operations as mounting and dismounting the electromagnetic chuck to and from the machine table are required.
- With the vertical type, an effective usage of T-grooves with the magnetic force of the electromagnetic chuck reduced (or turned off completely) facilitates positioning of the workpiece or obtaining the reference plane.
- Workpieces having a small attractive face area can also be clamped firmly.

[mm (in)]

Model	Nominal Dimensions	Top Plate					T-Slot		Bottom Plate			Height	Voltage	Current	Mass	Electro Chuck Master
		B <sub>1</sub>	L <sub>1</sub>	t	ℓ <sub>1</sub>	ℓ <sub>2</sub>	In X	In Y	B <sub>2</sub>	L <sub>2</sub>	h	H				
KEZX-50100A	500 (19.6) × 1000 (39.4)	500 (19.6)	1000 (39.4)	50 (1.96)	242 (9.52)	200 (7.87)	3	3	490 (19.2)	1000 (39.4)	20 (0.78)	130 (5.11)	90 VDC	4.2A	442kg/ 974 lb	5ASeries
KEZX-50150B	500 (19.6) × 1500 (59.0)	500 (19.6)	1500 (59.0)	50 (1.96)	238 (9.36)	200 (7.87)	3	6	490 (19.2)	1500 (59.0)	20 (0.78)	130 (5.11)	90 VDC	6.1A	663kg/ 1462 lb	EH-VE210D
KEZX-60100A	600 (23.6) × 1000 (39.4)	600 (23.6)	1000 (39.4)	50 (1.96)	242 (9.52)	250 (9.84)	3	3	590 (23.2)	1000 (39.4)	20 (0.78)	130 (5.11)	90 VDC	5.7A	530kg/ 1168 lb	EH-VE210D

※The full-functional chuck controller is equipment that has both the rectifying and demagnetizing functions. "5A Series" refers to chuck masters in general the rated output current of which is 5A.

※The chuck controller and clamp parts are not included. The KANETEC chucks work best when a KANETEC chuck controller is used.

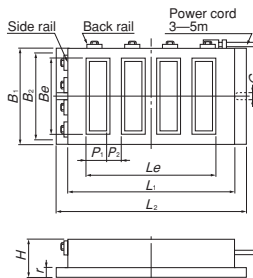
## Model KETZ SUPER POWERFUL TYPE

Environmentally Friendly



KETZ-2550B

### Chuck controller required additionally



### [Application]

Most efficient for heavy duty cutting with milling machine, shaper, planer and planomiller. It provides holding for thick workpieces and high speed cutting operation.

### [Features]

- Super powerful electromagnetic chucks specially designed for heavy duty cutting operation.
- Designed for very easy mounting, easy wiring hook-up, and elimination of residual magnetism.
- More effective holding power for workpieces sized bigger than 140×140 mm thicker than 15 mm.

[mm (in)]

Model	Nominal Dimensions	Top Plate				Pole Pitch		No. of Poles	Bottom Plate			Height	Hole	Voltage	Current	Mass	Electro Chuck Master	Remarks
		B <sub>1</sub>	L <sub>1</sub>	L <sub>e</sub>	B <sub>e</sub>	P <sub>1</sub>	P <sub>2</sub>		B <sub>2</sub>	L <sub>2</sub>	h	H	G					
KETZ- 1530B	150 (5.90) × 300 (11.8)	150 (5.90)	300 (11.8)	240 (9.44)	90 (3.54)	228 (8.97)	—	1	156 (6.14)	350 (13.7)	18 (0.70)	90 (3.54)	14	90 VDC	0.45A	28kg/ 61lb	ES-M103B	※For models with a combination of a rectifier and demagnetizer, see pages of "Chuck Controllers." P17~P20
KETZ- 1545B	150 (5.90) × 450 (17.7)	150 (5.90)	450 (17.7)	390 (15.3)	90 (3.54)	378 (14.8)	—	1	156 (6.14)	500 (19.6)	18 (0.70)	90 (3.54)	14	90 VDC	0.66A	42kg/ 92lb	ES-M305B	
KETZ- 2050B	200 (7.87) × 500 (19.6)	200 (7.87)	500 (19.6)	422 (16.6)	160 (6.29)	62 (2.44)	54 (2.12)	4	206 (8.10)	520 (20.4)	20 (0.78)	100 (3.93)	14	90 VDC	0.90A	68kg/ 149lb	EH-V105D	
KETZ- 2060B	200 (7.87) × 600 (23.6)	200 (7.87)	600 (23.6)	520 (20.4)	160 (6.29)	60 (2.36)	52 (2.04)	5	206 (8.10)	620 (24.4)	20 (0.78)	100 (3.93)	14	90 VDC	0.95A	79kg/ 174lb	EH-V205D	
KETZ- 2080B	200 (7.87) × 800 (31.5)	200 (7.87)	800 (31.5)	718 (28.2)	160 (6.29)	58 (2.28)	50 (1.96)	7	206 (8.10)	820 (32.2)	20 (0.78)	100 (3.93)	14	90 VDC	1.42A	115kg/ 253lb	EH-VE105D	
KETZ- 2550B	250 (9.84) × 500 (19.6)	250 (9.84)	500 (19.6)	422 (16.6)	200 (7.87)	62 (2.44)	54 (2.12)	4	256 (10.0)	520 (20.4)	20 (0.78)	110 (4.33)	14	90 VDC	1.16A	94kg/ 207lb	EH-VE205D	
KETZ- 2560B	250 (9.84) × 600 (23.6)	250 (9.84)	600 (23.6)	520 (20.4)	200 (7.87)	60 (2.36)	52 (2.04)	5	256 (10.0)	620 (24.4)	20 (0.78)	110 (4.33)	14	90 VDC	1.26A	118kg/ 260lb	EH-VE205D	
KETZ- 3060B	300 (11.8) × 600 (23.6)	300 (11.8)	600 (23.6)	520 (20.4)	240 (9.44)	67 (2.63)	56 (2.20)	7	306 (12.0)	920 (36.2)	20 (0.78)	110 (4.33)	14	90 VDC	1.64A	143kg/ 315lb	Above models except for the one marked by ※.	
KETZ- 3090B	300 (11.8) × 900 (35.4)	300 (11.8)	900 (35.4)	817 (32.1)	240 (9.44)	58 (2.28)	50 (1.96)	7	306 (12.0)	1020 (40.1)	20 (0.78)	110 (4.33)	14	90 VDC	3.04A	203kg/ 447lb		
KETZ- 4080B	400 (15.7) × 800 (31.5)	400 (15.7)	800 (31.5)	718 (28.2)	340 (13.3)	58 (2.28)	50 (1.96)	7	410 (16.1)	820 (32.2)	20 (0.78)	110 (4.33)	14	90 VDC	3.23A	240kg/ 529lb		
KETZ-40100B	400 (15.7) × 1000 (39.4)	400 (15.7)	1000 (39.4)	917 (36.1)	340 (13.3)	55 (2.16)	—	8	410 (16.1)	1020 (40.1)	20 (0.78)	110 (4.33)	14	90 VDC	3.69A	300kg/ 661lb		
KETZ-50100B	500 (19.6) × 1000 (39.4)	500 (19.6)	1000 (39.4)	917 (36.1)	430 (16.9)	55 (2.16)	—	8	510 (20.0)	1020 (40.1)	20 (0.78)	110 (4.33)	14	90 VDC	3.95A	375kg/ 826lb		
○KETZ-50150C	500 (19.6) × 1500 (59.0)	500 (19.6)	1500 (59.0)	1417 (55.7)	430 (16.9)	52 (2.04)	6 × 2	6 × 2	510 (20.0)	1520 (59.8)	20 (0.78)	110 (4.33)	14	90 VDC	2.69A × 2	552kg/ 1217lb		
KETZ-60100B	600 (23.6) × 1000 (39.4)	600 (23.6)	1000 (39.4)	917 (36.1)	530 (20.8)	55 (2.16)	—	8	610 (24.0)	1020 (40.1)	20 (0.78)	110 (4.33)	14	90 VDC	5.30A	414kg/ 912lb	EH-VE210D	
○KETZ-60150C	600 (23.6) × 1500 (59.0)	600 (23.6)	1500 (59.0)	1412 (55.5)	530 (20.8)	52 (2.04)	6 × 2	6 × 2	610 (24.0)	1520 (59.8)	20 (0.78)	110 (4.33)	14	90 VDC	3.51A × 2	650kg/ 1433lb		

※The power cord attached is 3 m for KETZ-1530B and 1545B and 5 m for other models.

※Full-function chuck masters are available with both rectification and demagnetization functions. ※If the magnetic force needs not be adjusted, use ES-M.

※Sizes not listed above are also available. ※The chuck controller and clamp parts are not included. The KANETEC chucks work best when a KANETEC chuck controller is used.

※The models marked by ○ are used combined section chucks. Please provide information such as center connecting hole position. Also the branch box TB-2PD is required for connection to the chuck master.