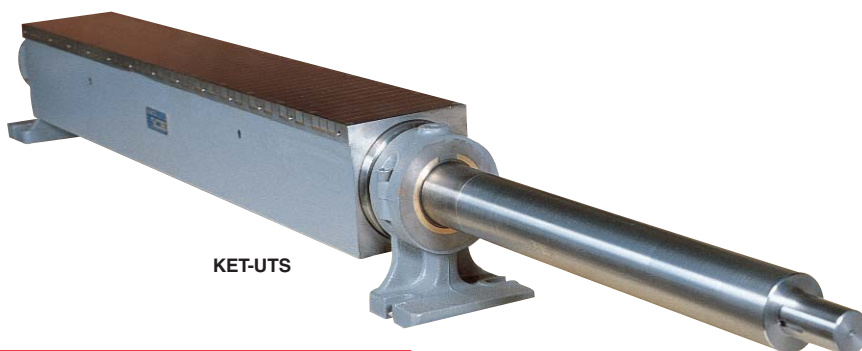
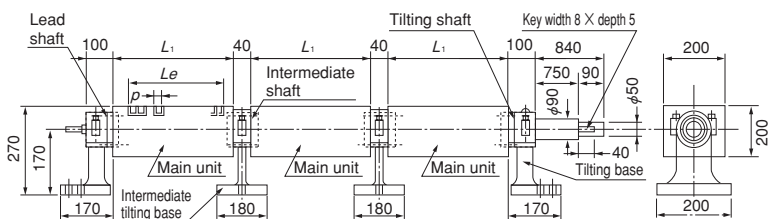


Model **KET-UTS** LARGE CONNECTING ROTARY TYPE



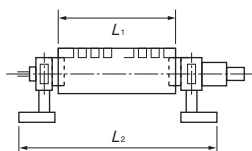
Chuck controller required additionally

Fig. 1



(The above figure shows 3 standard units connected.)

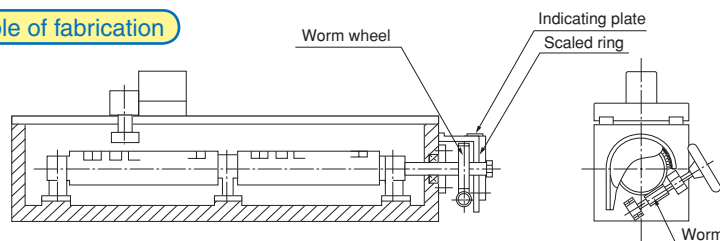
Fig. 2



<When ordering>

If you want to connect units as shown in Fig. 1, please order the number of main units to be connected.

An example of fabrication



[mm (in.)]

Model	Nominal Dimensions	Top Plate		Pole pitch <i>P</i>	Length <i>L</i> ₂	Voltage	Current	Mass	Electro Chuck Master	Remarks
		<i>L</i> ₁	<i>L</i> _e							
KET-20100UTS	200 (7.87) × 1000 (39.3)	1000 (39.3)	920 (36.2)	28 (4+24) (1.10) ※Pitch varies according to places.	1340 (52.7)	90 VDC	0.72A	Approx.305kg/ 672 lb	ES-M103B ES-M305B EH-V105D EH-V205D EH-VE105D EH-VE205D	※For models with a combination of a rectifier and demagnetizer, see pages of "Chuck Controllers."
KET-20120UTS	200 (7.87) × 1200 (47.2)	1200 (47.2)	1120 (44.0)		1540 (60.6)		0.90A	Approx.355kg/ 782 lb		
KET-20140UTS	200 (7.87) × 1400 (55.1)	1400 (55.1)	1320 (51.9)		1740 (68.5)		1.00A	Approx.400kg/ 881 lb		
KET-20150UTS	200 (7.87) × 1500 (59.0)	1500 (59.0)	1420 (55.9)		1840 (72.4)		1.25A	Approx.430kg/ 948 lb		
KET-20160UTS	200 (7.87) × 1600 (62.9)	1600 (62.9)	1520 (59.8)		1940 (76.3)		1.35A	Approx.445kg/ 981 lb		
KET-20170UTS	200 (7.87) × 1700 (66.9)	1700 (66.9)	1620 (63.7)	2040 (80.3)	1.33A	Approx.465kg/1025 lb				

※The chuck controllers in this table are for single unit and when two or more units are connected, use "current x number of units connected" to select a suitable model.

※If the magnetic force needs not be adjusted, use ES-M. ※The chuck controller and clamp parts are not included. The KANETEC chucks work best when a KANETEC chuck controller is used.

※The above models include the main unit, right/left tilting bases, lead shaft and tilting shaft.

[Application]

This model is used with grinders of wood slice cutters and most suitable for angle grinding of edges. It can also be applied to uniform grinding in the longitudinal direction.

[Features]

- As a connecting type, this model consists of a main unit, lead shaft, intermediate shaft, tilting shaft, tilting base and intermediate tilting base. When one unit is used, it is used as shown in Fig. 2 and when three units are used, they are connected as shown in Fig. 1.
- As the tilting torque is large, the shaft has been made long to increase the reduction ratio on your machine side. (The scaled ring and tilting device are not included. Provide them on your machine side.)
- The chuck-to-chuck connecting clearance is as small as 40 mm.

ELECTROMAGNETIC CHUCKS

CHUCK CONTROLLERS

PERMANENT MAGNETIC CHUCKS

PERMANENT ELECTROMAGNETIC CHUCKS

BLOCKS FOR MC

VACUUM CHUCKS

PROMELTA SYSTEM

SINE BAR CHUCKS

MAGNETIC BLOCKS

WORKING TOOLS

MEASURING TOOL HOLDERS

MAGNETIC HOLDERS

MAGNETIC TOOLS