

Model KR RECTIFIER



KR-N103A

Model KR-N

[Application]

These models rectify the input from an AC power source to direct current and supply it to electromagnetic chucks via a demagnetizer. They can also be used as a source to supply DC to electromagnetic holders.

[Features]

- The new compact size (volume is reduced by 50% compared with our conventional models) saves installation space and can be installed in control panel, too.
- Because connection with magnetic is to be made by rear face terminal, working time for connection can be tremendously reduced.
- Terminals for external control is equipped as a standard. It can respond to automatic operation by external contacts, e.t.c.
- With cable . plug.



KR-T203

Model KR-T

[Application]

These models rectify the input from an AC power source to direct current and supply it to electromagnetic chucks via a demagnetizer. The DC output can be varied in voltage to control the holding power of electromagnetic chucks.

[Features]

- Both 100 VAC and 200 VAC can be used.
- An output voltmeter is provided.
- The output can be varied in a wide range to provide a wide range of adjustment of the holding power.

Model	Power Source	Output		Dimensions			Mass
		Voltage	Current	Width	Height	Depth	
KR-N101A	Single-phase 100 VAC	90 VDC	1A	140(5.51)	80(3.15)	110(4.33)	1.1kg/2.4 lb
KR-N103A			3A				
KR-T201	Single-phase 100/200 VAC	0-120 VDC Stepless Volume	1A	280(11.0)	140(5.51)	184(7.24)	5.5kg/ 12 lb
KR-T203			3A				8.5kg/ 18 lb
KR-T205			5A				14.0kg/ 31 lb

※ The output voltage of Model KR-T is stable when above 30 V.

Model ESR HYSTERESIS MANUAL CONTROLLER



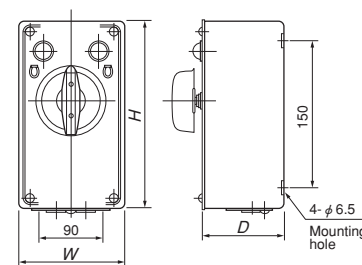
ESR-N102

[Application]

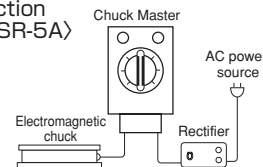
Model ESR-N102 rectifies an input from an AC power source to DC and outputs it to electromagnetic chucks and for demagnetization, the attenuating alternating output is operated manually. A rectifier is built in. Model ESR-5A relays the DC output to electromagnetic chucks and for demagnetization, the attenuating alternating output is operated manually. A rectifier needs to be installed in the preceding stage.

[Features]

- Turning the dial repeats reversal of the circuits and changing over of resistance values for easy demagnetization.
- Thanks to the manual type, it can be applied to diversified workpieces for individual machining operations by simply turning the dial.



(Connection of ESR-5A)



Model	Capacity		Dimensions			Mounting		Mounting Hole	Mass
	Input	Output	Width	Height	Depth	Width	Height		
ESR-N102	100 VAC	90 VDC-2A	110(4.33)	205(8.07)	85(3.34)	90(3.54)	150(5.90)	4-φ 6.5 (φ 0.25)	1.8kg/3.9 lb
ESR-5A	Max. 120 VDC	Max. 120 VDC-4A		190(7.48)	83.6(3.29)				1.7kg/3.7 lb

Model S-2A HYSTERESIS MANUAL SWITCH



S-2A

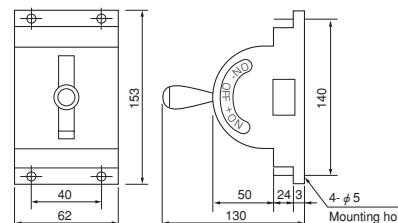
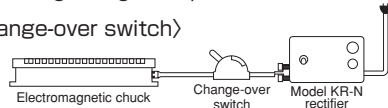
[Application]

A switch to relay the DC output from the rectifier to electromagnetic chucks and is operated manually to select the output for demagnetization.

[Features]

- Easy installation and light weight. Simple and robust construction.

(Wiring for change-over switch)



Model	Capacity		Dimensions			Mounting		Mounting Hole	Mass
	Input	Output	Width	Height	Depth	Width	Height		
S-2A	Max. 120 VDC	2A	62(2.44)	130(5.11)	153(6.02)	40(1.57)	140(5.51)	4-φ 5(φ 0.19)	0.4kg/0.8 lb

ELECTROMAGNETIC CHUCKS
CHUCK CONTROLLERS
PERMANENT MAGNETIC CHUCKS
PERMANENT ELECTROMAGNETIC CHUCKS
BLOCKS FOR MC
VACUUM CHUCKS
PROMELTA SYSTEM
SINE BAR CHUCKS
MAGNETIC BLOCKS
WORKING TOOLS
MEASURING TOOL HOLDERS
MAGNETIC HOLDERS
MAGNETIC TOOLS