

## Model KVR-GV VACUUM CHUCK (BUILT-IN VACUUM SYSTEM)

KVR-GV1530



**NEW**

**Outer Vacuum generating unit is not necessary!  
Air consumption is now tremendously saved!**

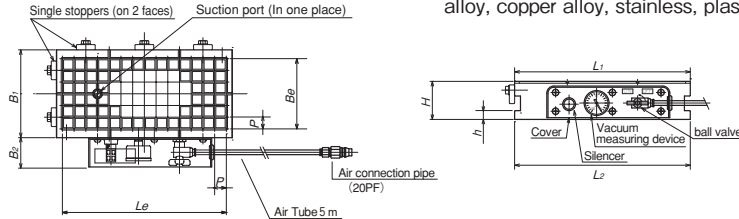
**For dry processing**

**[Application]**

Suitable for milling work pieces of non magnetic material such as aluminum alloy, copper alloy, stainless, plastic.

**[Features]**

- Compared with conventional elector type vacuum generating unit, air consumption can be greatly reduced.
- It can be used only after one touch joint pipe tube is connected to compressor in the factory.
- As vacuum generator is not necessary, its response is excellent and attraction as well as release can be done at once.
- By removing a cop on chuck fixing face, its inside parts can be easily changed.
- Its material can be selected mild steel or aluminum alloy.

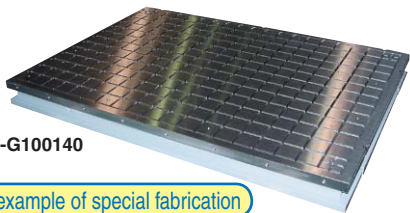


Model	Material	Nominal Dimensions	Dimensions						Grid Pitch P×P	Effective Area Be×Le	Mass
			L <sub>1</sub>	L <sub>2</sub>	B <sub>1</sub>	H	h	B <sub>2</sub>			
KVR-GV1530	軟鋼材	150(5.90) × 300(11.8)	300(11.8)	300(11.8)	150(5.90)	65(2.55)	15(0.59)	50(1.96)	20(0.78) × 20(0.78)	120(4.72) × 280(11.0)	17kg/ 37 lb
KVR-GV2050		200(7.87) × 500(19.7)	500(19.7)	524(20.6)	200(7.87)				25(0.98) × 25(0.98)	180(7.08) × 480(18.8)	43kg/ 94 lb
KVR-GV3060		300(11.8) × 600(23.6)	600(23.6)	624(24.5)	300(11.8)				25(0.98) × 25(0.98)	275(10.8) × 575(22.6)	82kg/180 lb
KVR-GVA1530	アルミ合金	150(5.90) × 300(11.8)	300(11.8)	300(11.8)	150(5.90)	65(2.55)	15(0.59)	50(1.96)	20(0.78) × 20(0.78)	120(4.72) × 280(11.0)	6kg/ 13 lb
KVR-GVA2050		200(7.87) × 500(19.7)	500(19.7)	524(20.6)	200(7.87)				20(0.78) × 20(0.78)	180(7.08) × 480(18.8)	15kg/ 33 lb
KVR-GVA3060		300(11.8) × 600(23.6)	600(23.6)	624(24.5)	300(11.8)				25(0.98) × 25(0.98)	275(10.8) × 575(22.6)	29kg/ 63 lb

※ seal rubber dia. 4 10m, air tube 5m, clamp metal are supplied, too.  
※ Please target more tah 0.75kw for capacity of the compressor to be applied.

## Model KVR-G VACUUM CHUCK (GRID SEAL TYPE)

KVR-G100140



An example of special fabrication

**Vacuum system required additionally**

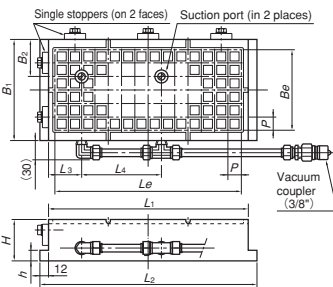
Also see "ELECTRO-MAGNETIC CHUCK WITH VACUUM CHUCK MODEL KETV" on page 11.

**[Application]**

Suitable for vacuum chucking such nonmagnetic materials as aluminum alloy, copper alloy, stainless steel and plastic during grinding.

**[Features]**

- Workpieces are vacuum chucked in the area defined by seal rubber strings set in the grid grooves, ensuring good sealing and consistent holding power.
- A desired work area can be set by cutting the seal rubber string (φ6 × 5~20 m, included) according to workpieces.
- The suction ports are provided in two places on all models to allow setting two workpieces.
- A vacuum coupler to connect to the vacuum system is provided. (Vacuum is turned on and off with the valve on the vacuum system.)
- Single stoppers are provided.
- The main unit is made of iron to enable the chuck to be held by an existing magnetic chuck.



Model	Nominal Dimensions	Dimensions									Grid Pitch P×P	Effective Area Be×Le	Mass	Applicable Vacuum System
		L <sub>1</sub>	L <sub>2</sub>	B <sub>1</sub>	H	h	B <sub>2</sub>	L <sub>3</sub>	L <sub>4</sub>					
KVR-G1530	150(5.90) × 300(11.8)	300(11.8)	324(12.7)	150(5.90)	60	15	55(2.16)	50	120(4.72)	20×20	120(4.72) × 280(11.0)	22kg/ 48 lb	VPU-E10 VPU-D20	
KVR-G2050	200(7.87) × 500(19.7)	500(19.7)	524(20.6)	200(7.87)			50(1.96)	(1.96)	220(8.66)		180(7.08) × 480(18.9)	46kg/101 lb		
KVR-G3060	300(11.8) × 600(23.6)	600(23.6)	624(24.5)	300(11.8)	(2.36)	(0.59)	63(2.48)	275(10.8)	25×25	275(10.8) × 575(22.6)	82kg/180 lb			
KVR-G4080	400(15.7) × 800(31.5)	800(31.5)	775(30.5)	400(15.7)				350(13.7)	(0.98×0.98)	375(14.7) × 775(30.5)	146kg/321 lb			
KVR-G50100	500(19.7) × 1000(39.4)	1000(39.4)	1024(40.3)	500(19.7)	475(18.7)		475(18.7) × 975(38.3)	228kg/503 lb						

## Model VPU-EG VACUUM SYSTEM

**It is light weight and compact. Enhanced function is installed.**



**[Application]**

It is vacuum generating unit exclusive for grid seal type vacuum chuck.

**[Features]**

- By eliminating the vacuum tank, extremely smaller overall size in comparison with our conventional product (VPU-E10) is achieved. Its operation is easy.
- The function gauge confirms the maintained vacuum condition.
- For wet operation.
- Auxiliary function of which operating situation or safety is shown, is installed. (adjustment for degree of vacuum or Interlock with machine side by output signal confirming vacuum, e.t.c.)

### Ejector type VPU-EG

Model	Swept Volume	Degree of vacuum	Inlet	Output Compressed Air			Dimensions			Mass
				Pressure	Consumption	Outlet	Width	Length	Height	
VPU-EG	27L/min	80kPa(600mmHg) over	dia. 8 tune connection pipe (with hose, vacuum coupler)	500~600kPa (5~6kgf/cm <sup>2</sup> )	44L/min	vacuum coupler 20PM(NITTO)	200 (7.87)	250 (9.84)	190 (7.48)	6kg/13.2 lb

※ Please target more tah 0.75kw for capacity of the compressor to correspond with.