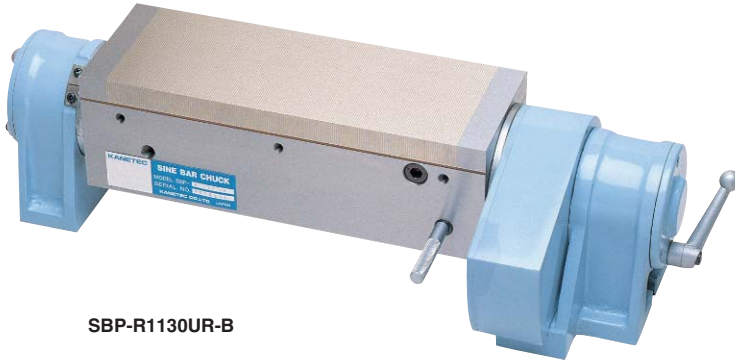


Model SBP-R·UR ROTARY TYPE PERMANENT MAGNETIC SINE BAR CHUCK

ELECTROMAGNETIC CHUCK CONTROLLERS

PERMANENT MAGNETIC CHUCKS



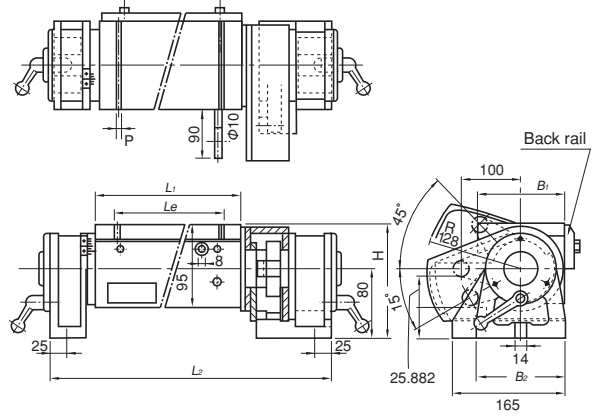
SBP-R1130UR-B

[Application]

Suitable for grinding molds and jigs including relatively small and thin ones that require high precision.

[Features]

- No electricity is needed, thus no heat is generated.
- The mechanical functions and the features are almost the same as those of Model SBE.



BLOCKS FOR MC

Model	Nominal Dimensions	Top Plate			Pole Pitch	Mounting Section		Height	Height at Max. Tilting	Tilting Angle	Angle Accuracy	Mass
		B ₁	L ₁	Le	H ₁	B ₂	L ₂	H				
SBP-R1130UR-B	105(4.13) × 300(11.8)	105 (4.13)	300 (11.8)	256 (10.0)	3(1+2) 0.11(0.03+0.07)	110 (4.33)	477 (18.7)	135 (5.31)	210(8.26)	-15°—+45°	0.007/100 max.	35kg/77 lb

*A block gage (25.882 mm) for 0° is included. For the mechanism of angle setting, see the bottom part of page 45. The conversion table included with the product facilitates angle setting.

VACUUM CHUCKS

Model SBP-R·LS SINE BAR CHUCK COMPOUND TYPE

W type

PROMELTA SYSTEM

SINE BAR CHUCKS

MAGNETIC BLOCKS

WORKING TOOLS

MEASURING TOOL HOLDERS

MAGNETIC HOLDERS

MAGNETIC TOOLS



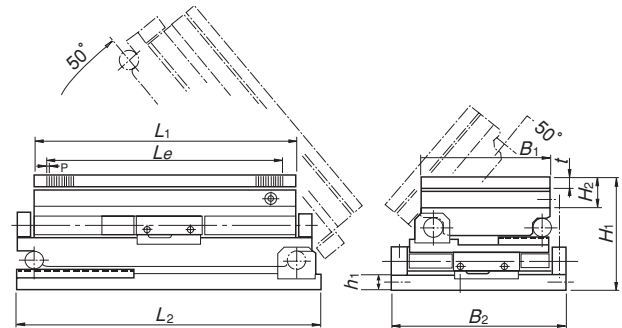
SBP-R1530LS-A

[Application]

A permanent magnetic chuck to enable highly accurate composite inclination on the X and Y axis.

[Features]

- When one side is closed, the chuck acts as a single vertical or horizontal type.
- The whole part of the sine bar is made of special steel, which has been precisely ground after hardening.
- The major parts have been lapped to ensure highly precise grinding and measurement over a long period of time.
- Since thin permanent magnetic chucks are used, this model is easy to handle and provides a wider machining space.



Gage block not included.

Model	Nominal Dimensions	Top Plate				Pole Pitch	Mounting Section		Height		Height at Max. Tilting 45°	Tilting Angle	Angle Accuracy	Roller's Center Distance	Mass
		B ₁	L ₁	t	Le	P	B ₂	L ₂	H ₁	H ₂					
SBP-R1018LS-A	105(4.13) × 175(6.89)	105 (4.13)	175 (6.89)		143 (5.63)	3(1+2) 0.11 (0.03+0.07)	166 (6.53)	200 (7.87)	129 (5.07)		(248) (9.76)	0°—50° { Accuracy guaranteed range 0°—45° }	0.007/100 max.	Upper 75 (2.95)	18kg/39 lb
SBP-R1325LS-A	130(5.11) × 250(9.84)	130 (5.11)	250 (9.84)	18 (0.70)	209 (8.22)		186 (7.32)	300 (11.8)		40	(323) (12.7)			Upper100 (3.93)	35kg/77 lb
SBP-R1515LS-A	150(5.90) × 150(5.90)	150 (5.90)	150 (5.90)		119 (4.68)		200 (7.87)	210 (8.26)	130 (5.11)		(264) (10.3)			Lower250 (9.84)	25kg/55 lb
SBP-R1530LS-A	150(5.90) × 300(11.8)	150 (5.90)	300 (11.8)		257 (10.1)		206 (8.10)	345 (13.5)			(372) (14.6)			Upper125 (4.92)	45kg/99 lb
														Lower300 (11.8)	

*A hexagonal wrench key is included. For the mechanism of angle setting, see the bottom part of page 45. The conversion table included with the product facilitates angle setting.

*The pole pitch may be 1.5(0.5+1.0).