

Model **SBP-R·S** SINE BAR CHUCK SINGLE TYPE

S type



SBP-R1018S-B

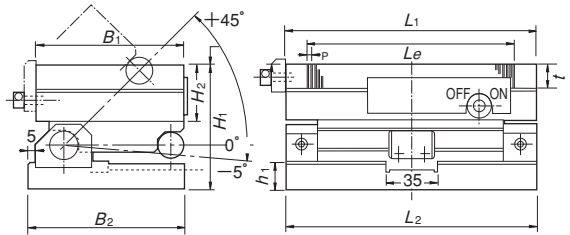
Gage block not included.

[Application]

A laterally long type with the long side as the tilting axis for precision grinding and measurement.

[Features]

- A flat type as thin as 89 mm to 100 mm for a wide range of applications. With a thin permanent chuck installed, this single model has been precisely finished to 0.007 mm or better.
- The whole part of the sine bar is made of special steel, which has been precisely ground after hardening.
- The major parts have been lapped to ensure highly precise grinding and measurement over a long period of time.
- Since a thin permanent magnetic chuck is used, this model is easy to handle and provides a wider machining space.
- Since a permanent magnet is used, no heat is generated to enable highly precise machining.



[mm(in)]

Model	Nominal Dimensions	Top Plate				Pole Pitch <i>P</i>	Mounting Section		Height		Height at Max. Tilting 45°	Tilting Angle	Angle Accuracy	Roller,s Center Distance	Mass
		<i>B</i> ₁	<i>L</i> ₁	<i>t</i>	<i>L</i> _e		<i>B</i> ₂	<i>L</i> ₂	<i>H</i> ₁	<i>H</i> ₂					
SBP-R1018S-B	105(4.13) × 175(6.89)	105 (4.13)	175 (6.89)	18	142 (5.59)	3(1+2) 0.11 (0.03+0.07)	110 (4.33)	175 (6.89)	89 (3.50)	40	(117) (4.60)	-5°—45°	0.007 / 100 max.	75(2.95)	9kg/ 20 lb
SBP-R1530S-B	150(5.90) × 300(11.8)	150 (5.90)	300 (11.8)	(0.70)	(10.0)		160 (6.29)	300 (11.8)	96 (3.78)	(157)	(172) (6.77)			125(4.92)	27kg/ 60 lb
SBP-R1545S-B	150(5.90) × 450(17.7)	150 (5.90)	450 (17.7)		(15.5)		450 (17.7)	450 (17.7)	100 (3.93)					125(4.92)	48kg/ 106 lb

※A hexagonal wrench key is included. For the mechanism of angle setting, see the bottom part of page 45. The conversion table included with the product facilitates angle setting.

Model **SBP-R·L** SINE BAR CHUCK SINGLE TYPE

L type



SBP-R1018L-B

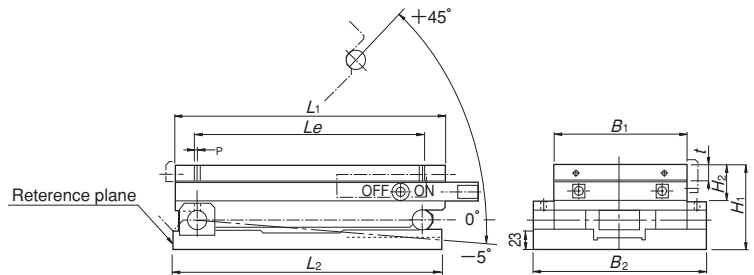
Gage block not included.

[Application]

A longitudinally long type with the short side as the tilting axis for precision grinding and measurement. Suitable for highly precise angle grinding on mold grinders, etc.

[Features]

- A grip is provided to facilitate angle setting in the longitudinal direction.



[mm(in)]

Model	Nominal Dimensions	Top Plate				Pole Pitch <i>P</i>	Mounting Section		Height		Height at Max. Tilting 45°	Tilting Angle	Angle Accuracy	Roller,s Center Distance	Mass
		<i>B</i> ₁	<i>L</i> ₁	<i>t</i>	<i>L</i> _e		<i>B</i> ₂	<i>L</i> ₂	<i>H</i> ₁	<i>H</i> ₂					
SBP-R1018L-B	105(4.13) × 175(6.89)	105 (4.13)	175 (6.89)	18	142 (5.59)	3(1+2) 0.11 (0.03+0.07)	151 (5.94)	175 (6.89)	89 (3.50)	40	(175.5) (6.90)	-5°—45°	0.007 / 100 max.	125(4.92)	11kg/ 24 lb
SBP-R1530L-B	150(5.90) × 300(11.8)	150 (5.90)	300 (11.8)	(0.70)	(10.0)		196 (7.71)	300 (11.8)	103 (4.05)	(157)	(272) (10.7)			250(9.84)	32kg/ 71 lb

※The tilting base fixing screws are 6 mm wide across flats. A hexagonal wrench key is included. For the mechanism of angle setting, see the bottom part of page 45. The conversion table included with the product facilitates angle setting.

ELECTROMAGNETIC CHUCKS
CHUCK CONTROLLERS
PERMANENT MAGNETIC CHUCKS
BLOCKS FOR MC
VACUUM CHUCKS
PROMELTA SYSTEM
SINE BAR CHUCKS
MAGNETIC BLOCKS
WORKING TOOLS
MEASURING TOOL HOLDERS
MAGNETIC HOLDERS
MAGNETIC TOOLS