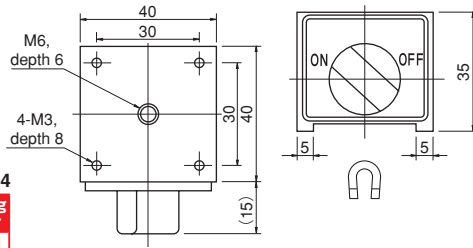


Model MB MAGNETIC HOLDER BASE



MB-0404
Holding Power
200N
or over



[Application]

This base can be used widely as a magnetic force ON/OFF type magnetic base. It is designed small and is useful as a base for temporarily mounted legs of equipment, sensors and lasers by mounting a jig using tapped holes or by some additional machining.

[Features]

- The base can be mounted and demounted easily using the select lever.
- Compact but powerful magnetic force.
- Waterproof and oilproof construction.

[mm (in)]

| Model | Holding Power | Dimensions | | | Mounting Hole | Mass |
|----------------|----------------------|------------|-----------|-----------|-------------------------------------|--------------|
| | | Width | Height | Length | | |
| MB-0404 | 200N (20kgf) or over | 40 (1.57) | 35 (1.37) | 40 (1.57) | 4-M3 (0.11) Depth 6 (Span30 (1.18)) | 0.4kg/0.8 lb |

※ The holding power applies to SS400, thickness 25 mm and ground surface.

Model MB-L MAGNETIC HOLDER



An example of usage

For mounting base of precision equipment

[Application]

Suitable as a base for laser and other optical measurement. Because the ON-OFF holding power is adjustable, these are recommended where fine adjustment and accuracy are required.

[Features]

- Easy ON-OFF operation using the lever.
- Thin and powerful magnetic force.
- Dry specification.

[mm (in)]

| Model | Holding Power | Dimensions | | | Center Tapped Hole | Peripheral tapped hole | | | | Operating lever part | | | Mass |
|-----------------|---------------|------------|-----------|------------|--|------------------------|----------|--------------------------|----------|----------------------|-----------|-----------|---------------|
| | | W | H | L | | P | A | b | c | S | d | h | |
| MB-L-45 | 65N (6.5kgf) | 45 (1.77) | 20 (0.78) | 2.5 (0.09) | M8 (0.31) × P1.25 (0.04) depth8 (0.31) | 25 (0.98) | 4 (0.15) | M4 (0.15) × P0.7 (0.02) | 6 (0.23) | 15 (0.59) | 19 (0.74) | 9 (0.35) | 0.3kg/0.66 lb |
| MB-L-65 | 200N (20kgf) | 65 (2.55) | 20 (0.78) | 4 (0.15) | M8 (0.31) × P1.25 (0.04) depth8 (0.31) | 25 (0.98) | 8 (0.31) | M4 (0.15) × P0.7 (0.02) | 6 (0.23) | 19 (0.74) | 24 (0.94) | 10 (0.39) | 0.6kg/1.32 lb |
| MB-L-90 | 250N (25kgf) | 90 (3.54) | 30 (1.18) | 6 (0.23) | M16 (0.23) × P1.0 (0.03) depth8 (0.31) | 50 (1.96) | 8 (0.31) | M6 (0.23) × P1.0 (0.037) | 8 (0.31) | 36 (1.41) | 36 (1.41) | 10 (0.39) | 1.2kg/2.64 lb |
| MB-L-125 | 800N (80kgf) | 125 (4.92) | 30 (1.18) | 6 (0.23) | M16 (0.23) × P1.0 (0.03) depth8 (0.31) | 50 (1.96) | 8 (0.31) | M6 (0.23) × P1.0 (0.037) | 8 (0.31) | 36 (1.41) | 36 (1.41) | 10 (0.39) | 3.3kg/7.27 lb |

※ The holding power applies to SS400, thickness 25 mm and ground surface.

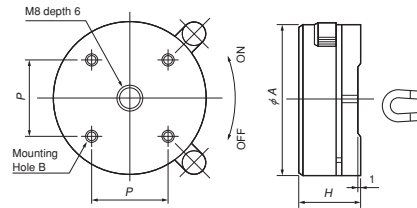
Model MB-L-C MAGNETIC HOLDER



MB-L-C50
Holding Power
59N



MB-L-C75
Holding Power
196N



[mm (in)]

[Application]

Suitable as a base for laser and other optical measurement. Because the ON-OFF holding power is adjustable, these are recommended where fine adjustment and accuracy are required.

[Features]

- Easy ON-OFF operation using the lever.
- Thin and powerful magnetic force.
- Dry specification.

| Model | Holding Power | Dimensions | | Mounting Hole | | Mass |
|-----------------|---------------|------------|-----------|---------------|--------------------------|---------------|
| | | A | H | P | B | |
| MB-L-C50 | 59N (6kgf) | 50 (1.96) | 20 (0.78) | 25 (0.98) | M4 (0.15) Depth 6 (0.23) | 0.30kg/0.6 lb |
| MB-L-C75 | 196N (20kgf) | 75 (2.95) | 20 (0.78) | 35 (1.37) | M4 (0.15) Depth 6 (0.23) | 0.68kg/1.5 lb |

※ The holding power applies to SS400, thickness 25 mm and ground surface.

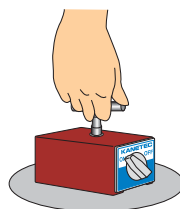
Model KM-B RULER HOLDER



KM-B2
Holding Power
1500N

KM-B1
Holding Power
800N

Parts for sale!



[Application]

Useful for a wide variety of operations; holding down a large ruler on a floor or wall during machining of iron plates, etc. and moving workpieces after cutting or holding and removing chips. ※If used at high temperature, the holding power may drop. ※For transporting heavy workpieces, Model HL-15 (P91) having a reinforced grip to withstand the weight is available.

[Features]

- Attachable and detachable easily by changeover lever.
- Attractive face is made in V-slot for KM-B1 and in inverted concave for KM-B2.

[mm (in)]

| Model | Holding Power | Mounting Hole | | | Tapped Hole | Mass |
|--------------|----------------|---------------|-------------|-----------|---|--------------|
| | | Width | Length | Height | | |
| KM-B1 | 800N (80kgf) | 50 (1.96) | 58.5 (2.30) | 55 (2.16) | M 8 (0.31) × 1.25 (0.04) Depth 7 (0.27) | 1.1kg/2.4 lb |
| KM-B2 | 1500N (150kgf) | | 120 (4.72) | 52 (2.04) | | 2.5kg/5.5 lb |

※ The holding power applies to SS400, thickness 10 mm and ground surface.

ELECTROMAGNETIC CHUCKS
CHUCK CONTROLLERS
PERMANENT ELECTROMAGNETIC CHUCKS
BLOCKS FOR MC
VACUUM CHUCKS
PROMELTA SYSTEM
SINE BAR CHUCKS
MAGNETIC BLOCKS
WORKING TOOLS
MEASURING TOOL HOLDERS
MAGNETIC HOLDERS
MAGNETIC TOOLS