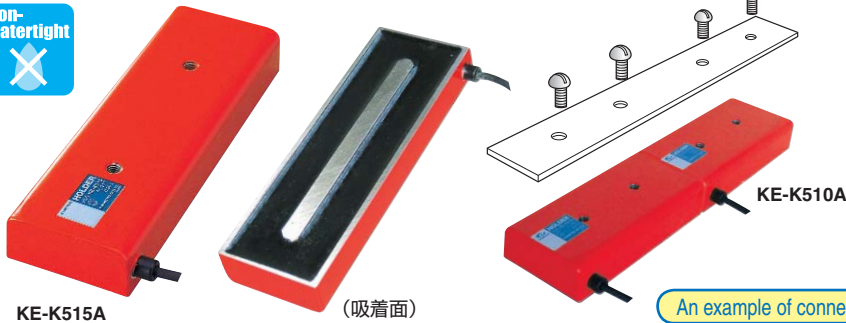


## Model KE-K PLATE TYPE MAGNETIC HOLDER

Controller required additionally



[Application]

Applicable for automatic working systems which lift workpieces in limited strokes and transport repeatedly in vertically narrow spaces. Also, applicable to a wide range of uses, from various automated equipment to industrial robot hands, as well as to feeding material in automatic presses and preventing warping in shearing material.

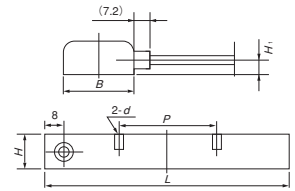
[Features]

- Usable for automatic operation.
- As thin as 15 to 20 mm yet powerful.

An example of connection for use

Model	Dimensions						Max. Holding Power	Voltage	Current	Operating Factor	Applicable Rectifier	Mass
	B	H	H <sub>i</sub>	L	P	d						
KE-K310A	30	15	6.5	100 (3.93)	40 (1.57)	M4 (0.15)	70N (7kgf)	24 VDC	0.11A	100%	KR-T101A-6/24 KR-T103A-24 RH-M102C-24 RH-M105B-24	0.2 kg/0.44 lb
KE-K315A	(1.18)	(0.59)	(0.25)	150 (5.90)	70 (2.75)	Depth 6 (0.23)	100N (10kgf)		0.20A		0.3 kg/0.66 lb	
KE-K510A	50	20	9.0	100 (3.93)	40 (1.57)	M6 (0.23)	180N (18kgf)		0.17A		0.45kg/0.99 lb	
KE-K515A	(1.96)	(0.78)	(0.35)	150 (3.93)	70 (2.75)	Depth 8 (0.31)	260N (26kgf)	0.30A	0.65kg/1.43 lb			

\*Max. holding power is as for 2mm thick steel plate. \*\*K type: Cord length 0.3 m



## Model KE-V ELECTRO MAGNETIC V HOLDER

Controller required additionally



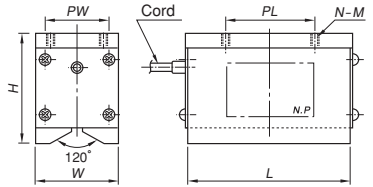
[Application]

These holders are suitable for transportation of small round bars and pipes in automated lines.



Precautions for use

Rust and scratches on the attractive face affect the holding power adversely. Repair it periodically.



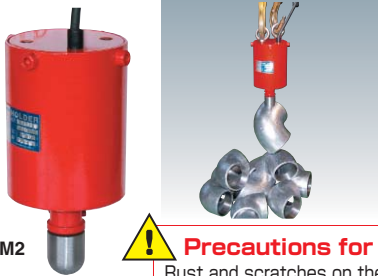
[mm (in)]

Model	Dimensions						Max. Holding Power [kgf]					Applicable Diameter	Voltage	Current	Operating Factor	Applicable Rectifier	Mass	
	W	H	L	PW	PL	N	M	φ10	φ30	φ50	φ80							平網
KE-V306	30	50	60 (2.36)	-	30 (1.18)	-	M6 (0.23)	15 (0.59)	25 (0.98)	-	-	30 (1.18)	φ10 (0.39)	24	0.23A	100% ED	RH-M102C-24	0.6kg/1.32 lb
KE-V309			90 (3.54)		50 (1.96)		Depth 10	17 (0.66)	50 (1.96)			80 (3.14)					80 (3.14)	0.9kg/1.98 lb
KE-V312			120 (4.72)		70 (2.75)		2 (0.07)	20 (0.78)	75 (2.95)			130 (5.11)					130 (5.11)	1.1kg/2.42 lb
KE-V510	50	70	100 (3.93)	-	80 (3.15)	-	M8 (0.31)	80 (3.14)	120 (4.72)	-	-	180 (7.08)	φ26 (1.02)	90	0.14A	100% ED	RH-M102C	2.2kg/4.85 lb
KE-V515			150 (5.90)		80 (3.15)		Depth 10	130 (5.11)	220 (8.66)			320 (12.5)					320 (12.5)	3.0kg/6.61 lb
KE-V520			200 (7.87)		80 (3.15) + 80 (3.15)		3 (0.11)	180 (7.08)	320 (12.5)			450 (17.7)					450 (17.7)	4.0kg/8.80 lb
KE-V815	75	100	150 (5.90)	50	80 (3.15)	-	M8 (0.31)	160 (6.29)	200 (7.87)	400 (15.7)	-	-	φ26 (1.02)	VDC	0.37A	100% ED	RH-M105B	6.5kg/14.3 lb
KE-V823			225 (8.85)		80 (3.15)		4 (0.15)	300 (11.8)	100 (3.93)	700 (27.5)			700 (27.5)				10kg/22.0 lb	
KE-V830			300 (11.8)		80 (3.15) + 80 (3.15)		6 (0.23)	450 (17.7)	600 (23.6)	1000 (39.3)			1000 (39.3)				13kg/28.6 lb	

\*V type: Cord length 0.3 m (11.8., approx) \*\*The maximum holding power applies to cold finished steel bars held on the whole area.

## Model KE-M STICK TYPE MAGNETIC HOLDER

Controller required additionally



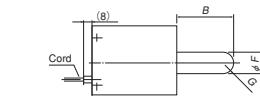
[Application]

Most suitable for automatic transfer and feeding of irregular shaped components such as castings mainly in automotive related manufacturers.

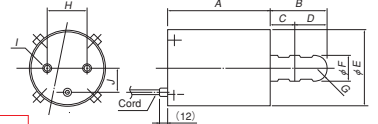
[Features]

These electromagnetic holders have a single long pole enabling it to lift parts that are randomly placed in buckets one by one by adjusting the voltage of the rectifier.

<KE-M1>



<KE-M2, M3>



Precautions for use

Rust and scratches on the attractive face affect the holding power adversely. Repair it periodically.

[mm (in)]

Model	Dimensions										Max. Holding Power	Voltage	Current	Operating Factor	Applicable Rectifier	Mass	
	A	B	C	D	E	F	G	H	I	J							
KE-M1	60 (2.36)	40 (1.57)	-	-	50.8 (2.00)	12 (0.47)	SR6 (0.23)	30 (1.18)	2 (0.07) - M6 (0.23)	15 (0.59)	20N (2kgf)	90 VDC	0.12A	50% ED	RH-M102C RH-M105B RH-M205B RH-M210B KR-N101A KR-N103A	0.8kg/1.76 lb	
KE-M2	100 (3.93)	55 (2.16)	25 (0.98)	30 (1.18)	76.3 (3.00)	25 (0.98)	SR12.5 (0.49)	50 (1.96)	2 (0.07) - M8 (0.31)	25 (0.98)	90N (9kgf)					0.33A	3.5kg/7.71 lb
KE-M3	160 (6.29)	80 (3.15)	30 (1.18)	50 (1.96)	114.3 (4.50)	35 (1.37)	SR17.5 (0.69)	80 (3.15)	2 (0.07) - M12 (0.47)	40 (1.57)	250N (25kgf)					0.77A	10kg/22.0 lb

\*\*50% ED ( Effective Duty - Repeating cycle of power on 5 min. and pause 5 min.) \*\*M type: Cord length 0.3 m.

\*The maximum holding power applies to such usage that the tip is brought in contact with the flat surface of an SS400 block and pulled up vertically.