

MAGNETIC TOOLS FOR WELDING OPERATION

Model MT-A MAGSUPPORTER*

MAGNETIC TOOLS FOR WELDING OPERATION

LIFTING MAGNET

MAGBORE

CHIP & SLUDGE TRANSPORTERS

ENVIRONMENTAL EQUIPMENT

MAGNETIZERS AND DEMAGNETIZERS

MAGNETIC EQUIPMENT FOR TRANSPORTATION

MAGNETIC SEPARATORS

HIGH GRADE MAGNETIC

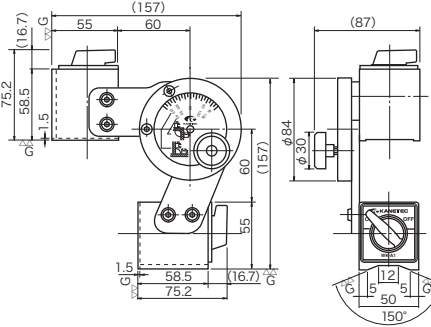
MEASURING TOOLS

MEASURING INSTRUMENTS

MAGNETIC MATERIALS



MT-A-2



<Note 1>

<Inside welding>

<Outside welding>

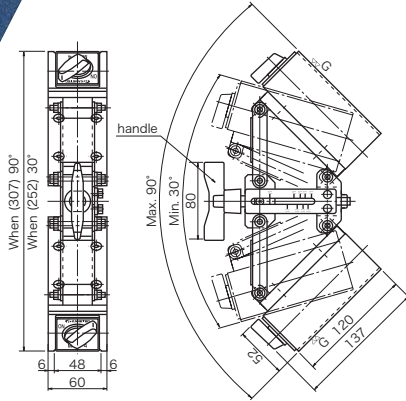
Welding part

Welding part

Both applications possible by changing the attractive face.



MT-A-4



[Application]

Suitable for mating and keeping stationary jointing parts of iron sheets and members during welding work.

[Features]

Powerful holding by use of a high performance permanent magnet.

MT-A-2

- Both inside and outside welding are possible.

<Note 1>

- Any desired holding angle can be set in a range of 45° and 135° (angle scale provided).
- ON/OFF switchover function and V-groove provided.

MT-A-4

- Any desired holding angle can be set in a range of 30° and 90° (angle scale provided).
- Angle adjustment with a handle.
- ON-OFF switchover function provided.

[mm (in)]

Model	Holding Power	Holder Dimensions			Angle	Mass
		Width	Length	Height		
MT-A-2	800N (80kgf) × 2	50 (1.96)	60 (2.36)	55 (2.16)	45°—135°	3.5kg/ 7.71 lb
MT-A-4	1500N (150kgf) × 2	60 (2.36)	120 (4.72)	52 (2.04)	30°—90°	5kg/ 11.0 lb

※ The holding power applies to SS400, thickness 10mm and ground surface.

Model WK WELDING CLAMPER

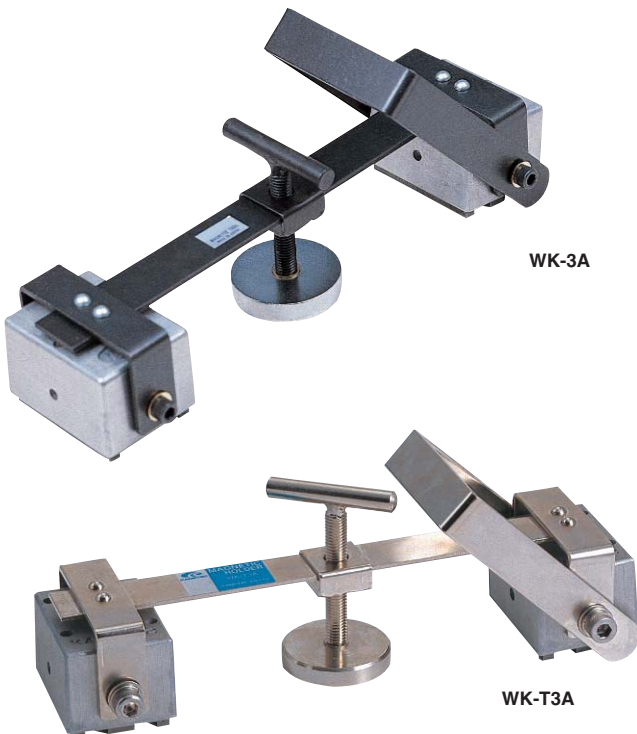
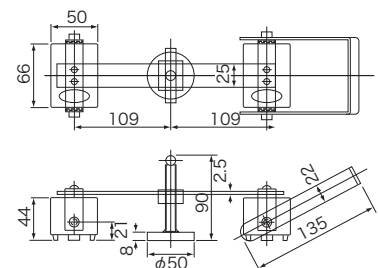
[Application]

Suitable as holding tools for tentative installation and tack welding on such work sites of construction, bridge, ship building and piping.

[Features]

- The magnet part has a minimum but enough free rotating angle range for easy mounting on workpieces.
- The exterior of the magnet holder part is made of aluminum to prevent adhesion of iron powder on the top and side faces.
- Model WK-T3A has a construction that is highly resistant to heat.
- These clampers have an enough mechanical strength to withstand rough handling.

An example of usage



WK-3A

WK-T3A

Model	Maximum Temperature	Holding Power	Mass
WK-3A	60°C	1000N (100kgf) × 2	2.3kg/5.07 lb
WK-T3A	180°C		

※ The holding power applies to SS400, thickness 10mm and ground surface.