

Model **KM-W** MAGNETIC HOLDER



Holding Power
200N
KM-06W



Holding Power
1300N
KM-12W

Usable as a hinge of thin plates and simple jig for welding operations.

[Application]

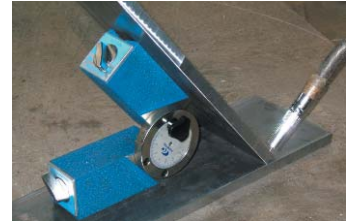
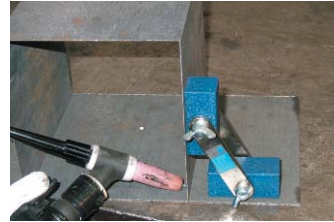
Suitable for tentative holding during drilling and assembly.

[Features]

- Two magnets as a pair for easy angle setting.
- An angle scale provided. (KM-12W)
- The magnetic force can be turned on and off by operating the lever. (KM-12W)
- The V-groove allows the holder to be attached to certain poles and curved surfaces in addition to the flat surface. (KM-12W)

Model	Holding Power	Holder Dimensions			Angle	Length	Mass
		Width	Length	Height			
KM-06W	200N (20kgf)	26 (1.02)	60 (2.36)	25 (0.98)	129 (5.07)	Free	0.7kg/1.54 lb
KM-12W	1300N (130kgf)	50 (1.96)	117 (4.60)	55 (2.16)	273 (10.75)		

※ The holding power applies to SS400, thickness 10mm and ground surface.



Model **KM-SA** HEXAGONAL MAGNETIC HOLDER



KM-S1A

Holding Power
Round steel **200~300N**
Steel plate **200~600N**



[Application]

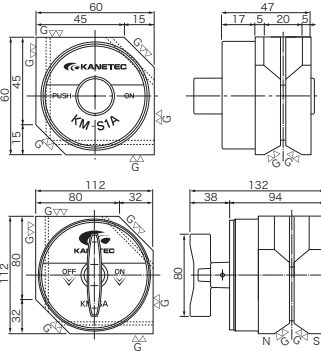
These holders provide a strong holding power for tentative holding during welding and tentative assembly. These holders can also be used as a block.

[Features]

- The holding angle can be set to 45°, 90° and 135°.
- The small type is equipped with a pushbutton and the large type with a rotary handle for turning on and off the magnetic force.



KM-SA



Holding Power
Round steel **600~900N**
Steel plate **1200~1400N**

Model	Holding Power		Dimensions	Mass
	Round Steel	Steel Plate		
KM-SA	600—900N (60—90kgf) 150—200N (15—20kgf)	1200—1400N (120—140kgf) 800—1000N (80—100kgf)	112(4.40) × 112(4.40) × 94(3.70)	6.0kg/ 13.2 lb
KM-S1A	200—300N (20—30kgf) 50—70N (5—7kgf)	200—600N (20—60kgf) 100—350N (10—35kgf)	60(2.36) × 60(2.36) × 42(1.65)	0.85kg/ 1.87 lb

※ The holding power applies to iron plate, SS400, 10mm thickness, and ground surface.

Note: The holding power in { } is for attraction on one face in the case of double-face attraction.

Model **KM-S** HEXAGONAL MAGNETIC HOLDER



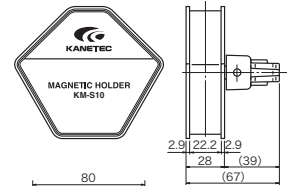
Holding Power
Steel plate **160~260N**
KM-S10

[Application]

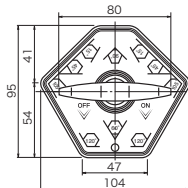
Usable to temporarily hold and assemble workpieces during welding. These holders hold workpieces firmly.

[Features]

- The workpiece holding angle can be selected from 15°, 45°, 60°, 90°, 105° and 120°.
- The magnetic force can be turned on and off.
- The holding power on steel plates is about the same as when both faces of KM-S9 and S12 are used and at angles other than 105°, the holding power does not drop when two faces are used.

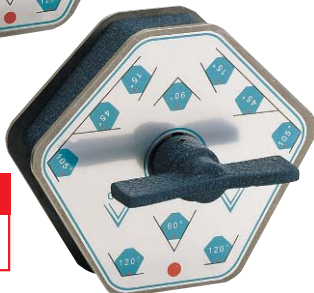


Model



[mm (in)]

Holding Power
Steel plate **250~450N**
KM-S13



Model	Holding Power	Dimensions	Mass
	Steel Plate		
KM-S10	150—250N (15—25kgf)	104 (4.09) × 95 (3.74) × 67 (2.63)	0.9kg/1.98 lb
KM-S13	250—450N (25—45kgf)	132 (5.19) × 120 (4.72) × 73 (2.87)	1.6kg/3.52 lb

※ The holding power applies to iron plate, SS400, 10mm thickness, and ground surface.

MAGNETIC TOOLS FOR WELDING OPERATION

LIFTING MAGNET

MAGBORE

CHIP & SLUDGE TRANSPORTERS

ENVIRONMENTAL EQUIPMENT

MAGNETIZERS AND DEMAGNETIZERS

MAGNETIC EQUIPMENT FOR TRANSPORTATION

MAGNETIC SEPARATORS

HIGH-GRADE MAGNETIC SEPARATORS

MEASURING TOOLS

MEASURING INSTRUMENTS

MAGNETIC MATERIALS