

## Model KM-S SIMPLE HEXAGONAL HOLDER

MAGNETIC TOOLS FOR WELDING OPERATION

LIFTING MAGNET

MAGBORE

CHIP & SLUDGE TRANSPORTERS

ENVIRONMENTAL EQUIPMENT

MAGNETIZERS AND DEMAGNETIZERS

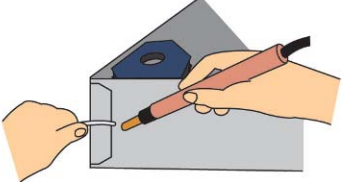
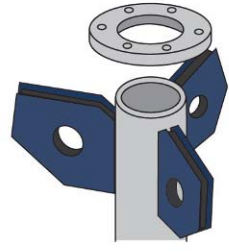
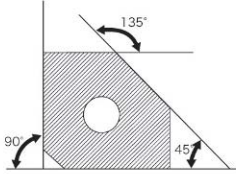
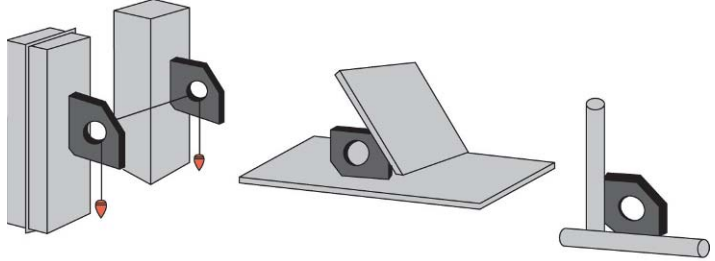
MAGNETIC EQUIPMENT FOR TRANSPORTATION

SEPARATORS

HIGH GRADE MAGNETIC TOOLS

MEASURING INSTRUMENTS

MAGNETIC MATERIALS



KM-S12

KM-S9

Holding Power	
Round steel	Steel plate
250~400N	250~700N

Holding Power	
Round steel	Steel plate
100~200N	150~500N

**[Application]**

These holders are used for tack welding and tentative assembly during welding and assembly work. They can be used in wide applications as they hold round pipes and round steel.

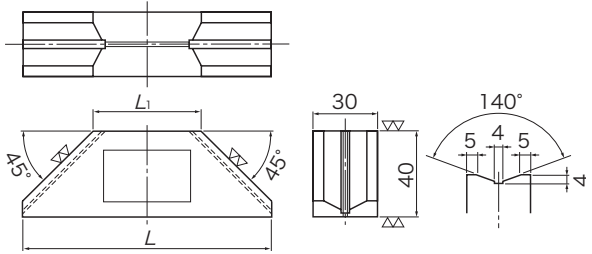
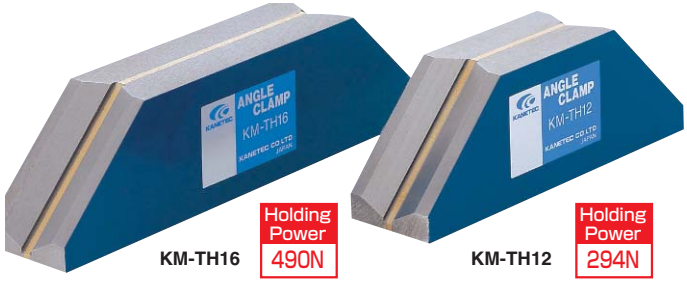
**[Features]**

- The holding angle can be set to 45°, 90° and 135°.
- Compact and handy. Lower cost and simpler than the hexagonal holder KM-S.
- The concave attractive face can hold certain round steel.

Model	Holding Power		Dimensions	Dia of round Steel	Mass
	Round Steel	Steel Plate			
KM-S9	100—200N (10—20kgf) { 50—100N ( 5—10kgf) }	150—500N (15—50kgf) {100—300N (10—30kgf) }	90 (3.54) × 90 (3.54) × 14 (0.55)	min φ 10 (0.39)	0.5kg/ 1.10 lb
KM-S12	250—400N (25—40kgf) {150—250N (15—25kgf) }	250—700N (25—70kgf) {200—500N (20—50kgf) }	120 (4.72) × 120 (4.72) × 26 (1.02)	min φ 24 (0.94)	1.2kg/ 2.64 lb

※ The holding power applies to iron plate, SS400, 10mm thickness, and ground surface.  
Note : The holding power in { } is for attraction on one face in the case of double-face attraction.

## Model KM-TH ANGLE CLAMP



**[Application]**

Usable to temporarily hold workpieces during tack welding and assembly or to hold gages and rulers.

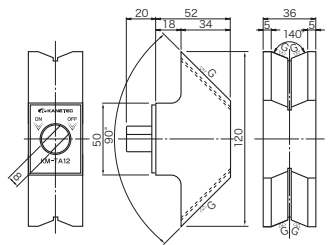
**[Features]**

- The all inclined sides provide strong magnetic force. Angles of 45°, 90° and 135° can be used.

Model	Holding Power	Dimensions		Mass
		L	L <sub>1</sub>	
KM-TH12	294N (30kgf)	115 (4.52)	50 (1.96)	0.8kg / 1.76 lb
KM-TH16	490N (50kgf)	155 (6.10)	90 (3.54)	1.2kg / 2.64 lb

※ The holding power applies to SS400, thickness 10mm and ground surface.

## Model KM-TA ANGLE CLAMP



**[Application]**

This clamp can be used for tentative holding and tentative assembly during welding to hold workpieces strongly. It can also be used as a block.

**[Features]**

- The V-groove on the attractive face enables this clamp to be used for materials having curved surfaces such as round steel and pipe in addition to flat materials.
- ON-OFF switchover function provided.
- Holding angle 90° only.

Model	Holding Power	Dimensions			Mass
		Length	Width	Height	
KM-TA12	400N (40kgf)	72 (2.83)	36 (1.41)	120 (4.72)	1kg/ 2.20 lb

※ The holding power applies to SS400, thickness 10mm and ground surface.