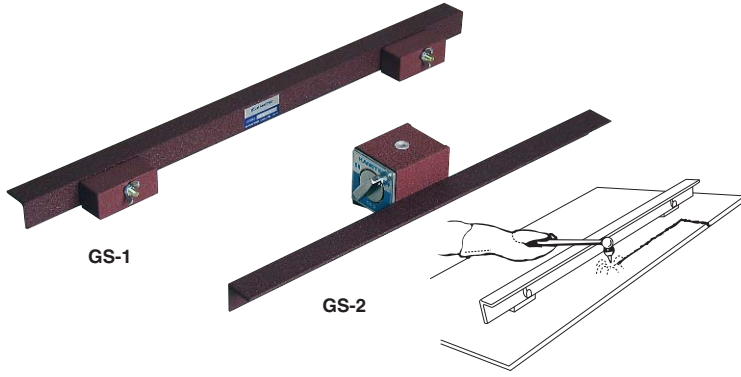


Model **GS** GUIDE SCALE



[Application]

Special guide tools for moving the torch while maintaining the height of the nozzle during gas welding.

[Features]

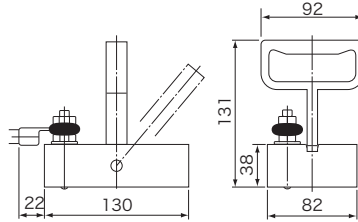
- A high performance permanent magnet holds the scale strongly.
- Model GS-1 allows scale up-down adjustment according to the height of the nozzle.
- Model GS-2 allows its magnetic force to be turned on and off with a lever for easy mounting and dismounting.

Model	Holding Power	Length	Width	Height	Mass
GS-1	350N (35kgf)	500 (19.6)	85 (3.34)	70 (2.75)	1.1kg/2.42 lb
GS-2	1000N (100kgf)	400 (15.7)	68 (2.67)	40 (1.57)	2.3kg/5.07 lb

※GS-2 can be mounted and dismounted easily with a select lever.

※The holding power applies to SS400, thickness 10mm and ground surface.

Model **HL-E** EARTH CLAMP



[Application]

Capable of connecting earth terminals on a wide variety of faces.

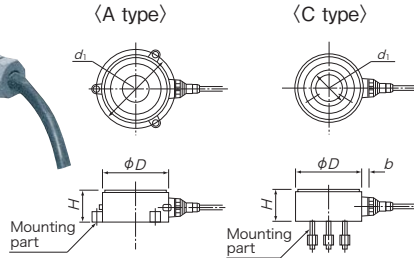
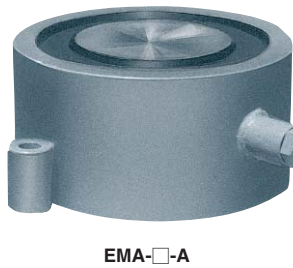
[Features]

- A high performance permanent magnet is used for easy mounting and dismounting by "one-touch" operation.

Model	Holding Power	Current Capacity	Mass
HL-10E	1600N (160kgf)	300A	1.5kg/3.30 lb

※The holding power applies to 16 mm thick mill scale steel plates.

Model **EMA** WELDING JIG



[Application]

Jigs developed for automatic welding of steel plates to hold steel plates and backing materials.

These jigs can be used to hold cut-out pieces during EPM welding operations, to straighten workpieces and to secure stacked steel plates during fusing of stacked steel plates.

[Features]

- Holding and releasing can be controlled electrically.
- Workpieces are secured to a welding frame by a strong magnetic force and therefore warping of steel plates due to welding heat can be prevented.
- Waterproof construction for use for outdoor operations. Highly resistant to impact and heat.

Model	Holding Power		Dimensions				Power Source		Mass
	Steel Plate 20mm thick	Steel Plate 50mm thick	D	H	d ₁	b	Clamp Hole	Voltage	
EMA-25-A	18kN (1800kgf)	24kN (2400kgf)	245 (9.64)	100 (3.93)	290 (11.4)	70 (2.75)	3 (0.11) - φ21 (0.82)	200 VDC	1.0 A
EMA-25-C					150 (5.90)		3 (0.11) - M16 (0.62)		
EMA-26-A	20kN (2000kgf)	36kN (3600kgf)	255 (10.0)	120 (4.72)	305 (12.0)		4 (0.15) - φ26 (1.02)		1.4 A
EMA-30-A	25kN (2500kgf)	50kN (5000kgf)	296 (11.6)	150 (5.90)	340 (13.3)		3 (0.11) - φ23 (0.90)		
EMA-30-C					200 (7.87)		3 (0.11) - M20 (0.78)		1.75A

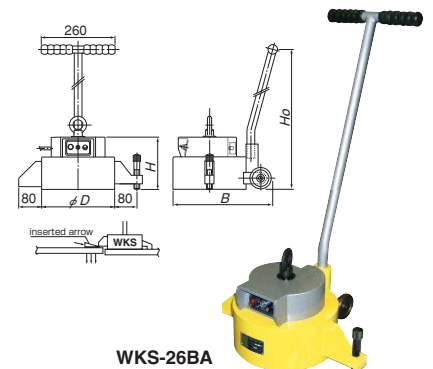
Model **WKS** WELDING JIG

[Application]

Electromagnetic device, which can easily adjust positioning during temporary welding work of iron plates.

[Features]

- It can be attracted at the meeting point by a turn of the switch.
- Amending work can be done easily by inserting an arrow end point.
- Series of WKS-26 and 30 is supplied with wheel for its easy moving.
- WKS-15 type is handy type which is easily to move or handled manually at working site.
- Supplied with a rectifier.



Model	Holding Power		Dimensions				Power Source		Mass
	Steel Plate 20mm thick	Steel Plate 50mm thick	D	H	B	Hb	Voltage	Current	
WKS-16BA	8kN (800kgf)	10kN (1000kgf)	162 (6.37)	186 (7.32)	—	—	AC200V	0.5 A	Approx16kg/35.2 lb
WKS-26BA	20kN (2000kgf)	36kN (3600kgf)	258 (10.1)	185 (7.28)	435 (17.1)	813 (32.0)		1.5 A	Approx50kg/110 lb
WKS-30BA	25kN (2500kgf)	50kN (5000kgf)	296 (11.6)	220 (8.66)	473 (18.6)	828 (32.5)		1.5 A	Approx70kg/154 lb

MAGNETIC TOOLS FOR WELDING OPERATION

LIFTING MAGNET

MAGBORE

CHIP & SLUDGE TRANSPORTERS

ENVIRONMENTAL EQUIPMENT

MAGNETIZERS AND DEMAGNETIZERS

MAGNETIC EQUIPMENT FOR TRANSPORTATION

MAGNETIC SEPARATORS

HIGH-GRADE MAGNETIC SEPARATORS

MEASURING TOOLS

MEASURING INSTRUMENTS

MAGNETIC MATERIALS