

Model LPH-L SECTION STEEL LIFTING PERMANENT MAGNETIC LIFMA

MAGNETIC TOOLS FOR WELDING OPERATION

LIFTING MAGNET

MAGBORG CHIP & SLUDGE TRANSPORTERS EQUIPMENT

ENVIRONMENTAL EQUIPMENT

MAGNETIZERS AND DEMAGNETIZERS

MAGNETIC EQUIPMENT FOR TRANSPORTATION

MAGNETIC SEPARATORS



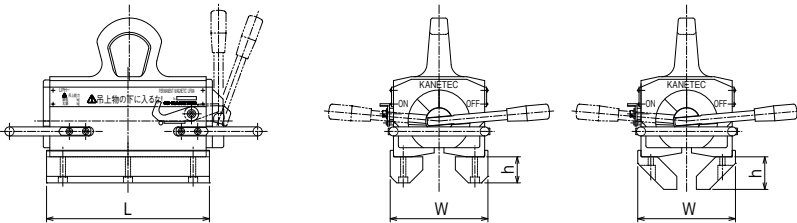
LPH-L600-M



Adapter for mountain shaped steel form (M)

Adapter for valley shaped steel form (V)

Caution to use
Lift capacity of flat steel plate or round steel bar is reduced when adapters are mounted of LPH-. Lift capacity is lower, due to magnetic leakage into the adapters.



[Application]

L shape steel can be easily transported with the dedicated adapter equipped on the standard type permanent magnetic Lifma LPH.

[Features]

- Without adapter, it can be used as standard LPH type.
- Another adapter for other shaped steel forms can be equipped with special order mounting.



An example of lifting by use of LPH-L type.

Model	Included Adapter	Dimensions [mm (in)]			Mass
		L	W	h	
LPH-L600-M	For mountain shaped steel form	250 (9.84)	150 (5.90)	40 (1.57)	38kg/83.7 lb
LPH-L600-V	For valley shaped steel form			50 (1.96)	
LPH-L600-W	For mountain shaped steel form	250 (9.84)	150 (5.90)	40 (1.57)	46kg/101 lb
	For valley shaped steel form			50 (1.96)	

※Bolt for fixing and tool for tightening are supplied with adapter.

LPH-L lifting standard

Model	adapted work size (for a single)
LPH-L600-M	For mountain shaped steel form L75~250×up to 4m
LPH-L600-V	For valley shaped steel form L90~200×up to 2m

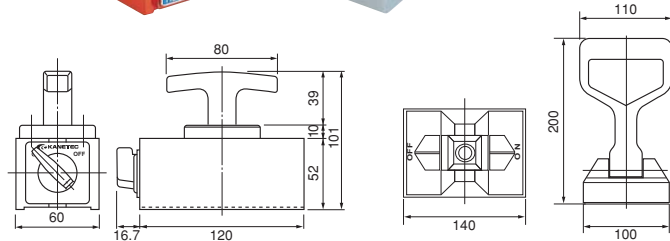
Model HL HAND LIFMA*



HL-15



HL-20A



[Application]

Most suitable for pulling out steel material or steel sheet and carrying material, metal mold, press die and so on.

[Features]

- A new cam mechanism is employed so as not to apply friction due to holding and releasing directly to the surface of workpieces to transport. (HL-20A)
- Workpieces are held and released quite smoothly.
- The magnetic force can be turned on and off by lever operation. (HL-15)
- The T-handle is robust and fixed for stable workpiece transportation. (HL-15)

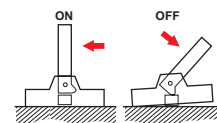
How to Use (HL-20A)

<Holding>

Place Hand Lifma on the carrying object with handle right up and pull it out after ensuring that it has attracted perfectly.

<Releasing>

Hand Lifma releases the carrying object when the handle is turned in the off direction.



Holding



Releasing

Model	Holding Power		Lifting Capacity	Dimensions			Handle Length	Mass
	Lateral Pulling	Lifting up		Width	Length	Height		
HL-15	350N (35kgf)	1.5kN (150kgf)	20kg/44.1 lb	60 (2.36)	120 (4.72)	52 (2.04)	49 (1.92)	3.0kg/6.6 lb
HL-20A	500N (50kgf)	2kN (200kgf)	30kg/66.1 lb	100 (3.93)	140 (5.51)	32 (1.26)	200 (7.87)	2.5kg/5.5 lb

※The holding power applies to 15mm thick soft steel. The holding power drops according to thicknesses and materials of workpieces. For safety, please use these products at a load that is one third or less of the values indicated in the table.

※Do not employ it as a hoist.