

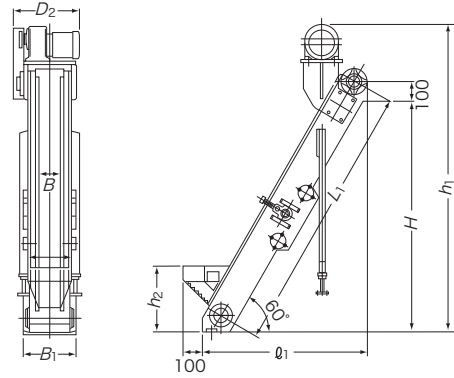
Model MCO MAGNETIC CHIP CONVEYOR

[Application]

This model is designed to effectively attract, convey and remove chips produced from machine tools by a magnetic force while letting oil sticking to chips drop naturally. (This model is suitable for chips shorter than 60 mm.)

[Features]

- As chips are held by magnets, they can be conveyed on a sharp inclination. This feature enables it to shorten the line and reduce the floor area and thus contributes to effective three-dimensional utilization of factory space.
- Fine chips can be attracted and oil can be removed efficiently.
- The optimum design by use of high performance permanent magnets and little attenuation of the magnetic force. Simplified mechanism for trouble-free operation.



[mm(in)]

| Model | Transporting Speed | Power Source | Motor | Dimensions | | | | | | | Mass | |
|-----------|--------------------------------|--------------------|-------|---------------|----------------|-------------|----------------|----------------|----------------|----------------|---------------|----------------|
| | | | | B | L ₁ | H | B ₁ | b ₂ | ℓ ₁ | h ₁ | | h ₂ |
| MCO-1515A | Approx.8/9.5m/min (50/60Hz) | 3-phase 200 VAC | 400W | 150 (5.90) | 1500 (59.0) | 1270 (50.0) | 284 (11.1) | 375 (14.7) | 925(36.4) | 1620 (63.7) | 350 (13.7) | 140kg/308 lb |
| MCO-1520A | | | | | 2000 (78.7) | 1700 (66.9) | | | 1180(46.4) | 2060 (81.0) | | 155kg/341 lb |
| MCO-1530A | | | | 3000(118.1) | 2570(101.2) | 1675(65.9) | 2905(114.4) | 190kg/418 lb | | | | |
| MCO-2015A | | | | 200 (7.87) | 1500 (59.0) | 1270 (50.0) | 334 (13.1) | 425 (16.7) | 925(36.4) | 1620 (63.7) | | 150kg/330 lb |
| MCO-2020A | | | | | 2000 (78.7) | 1700 (66.9) | | | 1180(46.4) | 2060 (81.0) | | 175kg/385 lb |
| MCO-2030A | | | | | 3000(118.1) | 2570(101.2) | | | 1675(65.9) | 2905(114.4) | | 210kg/463 lb |
| MCO-2515A | | | | 260 (10.2) | 1500 (59.0) | 1270 (50.0) | 394 (15.5) | 475 (18.7) | 925(36.4) | 1620 (63.7) | | 160kg/352 lb |
| MCO-2520A | | | | | 2000 (78.7) | 1700 (66.9) | | | 1180(46.4) | 2060 (81.0) | | 190kg/418 lb |
| MCO-2530A | | | | | 3000(118.1) | 2570(101.2) | | | 1675(65.9) | 2905(114.4) | | 230kg/507 lb |

Model MCOL MAGNETIC CHIP CONVEYOR

[Application]

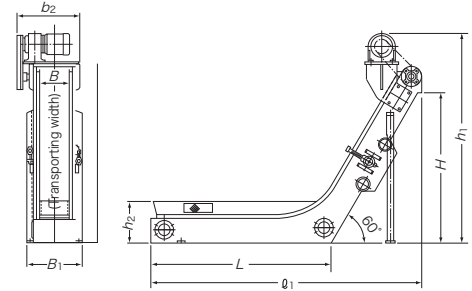
This model is installed in front of a tank to which cutting fluid flows from a machine tool to attract (pick up) chips by a magnetic force in cutting fluid to remove and transport them. (This model is suitable for chips shorter than 60 mm.)

[Features]

- A model that plays two roles of horizontal conveyor and inclined conveyor in one unit.
- Can be installed directly on an oil tank or machine tool.



An example of fabrication of MCOL-2535



Strong type is added in the series. As for special size, please inquire separately.

[mm(in)]

| Model | Transporting Speed | Power Source | Motor | Dimensions | | | | | | | Mass | |
|-------------|--------------------------------|--------------------|-------|---------------|----------------|---------------|----------------|----------------|----------------|----------------|---------------|----------------|
| | | | | B | L ₁ | H | B ₁ | b ₂ | ℓ ₁ | h ₁ | | h ₂ |
| MCOL-1510A | Approx.8/9.5m/min (50/60Hz) | 3-phase 200 VAC | 400W | 150 (5.90) | 1000 (39.7) | 1000 (39.7) | 284 (11.1) | 375 (14.7) | 1600(62.9) | 1390 (54.7) | 275 (10.8) | 140kg/308 lb |
| MCOL-1515A | | | | | 1500 (59.0) | | | | 2100(82.6) | | | 155kg/341 lb |
| MCOL-2010A | | | | 200 (7.87) | 1000 (39.7) | 334 (13.1) | 425 (16.7) | 1600(62.9) | 190kg/418 lb | | | |
| MCOL-2015A | | | | | 1500 (59.0) | | | 2100(82.6) | 150kg/330 lb | | | |
| MCOL-2510A | | | | | 260 (10.2) | | | 1000 (39.7) | 394 (15.5) | | | 475 (18.7) |
| MCOL-2515A | | | | 200 (7.87) | 1500 (59.0) | 394 (15.5) | 475 (18.7) | 2100(82.6) | 160kg/352 lb | | | |
| MCOL-H2010A | 1000 (39.7) | 1664(65.5) | 1565 | | 283 | | | 190kg/418 lb | | | | |
| MCOL-H2015A | 1500 (59.0) | | | | | | | 2164(85.1) | 230kg/507 lb | | | |

MAGNETIC TOOLS FOR WELDING OPERATION
LIFTING MAGNET
MAGBORO
CHIP & SLUDGE TRANSPORTERS EQUIPMENT
ENVIRONMENTAL DEMAGNETIZERS AND MAGNETIZERS FOR TRANSPORTATION
MAGNETIC SEPARATORS
HIGH GRADE MAGNETIC MEASURING TOOLS
MEASURING INSTRUMENTS
MAGNETIC MATERIALS