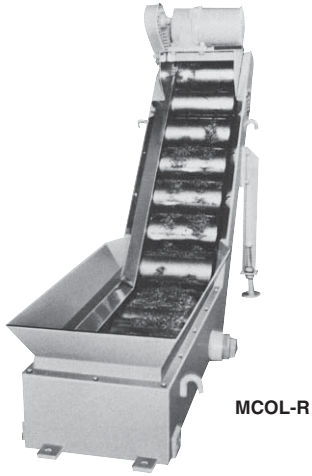


Model **MCOL-R** MAGNETIC ROLLER TYPE CHIP CONVEYOR

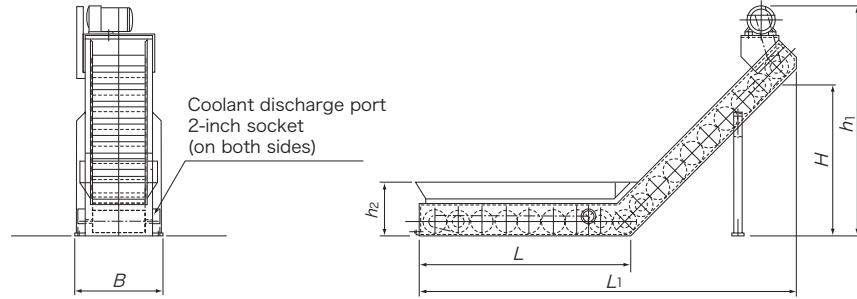


[Application]

This model uses a strong magnetic force generated on the surface of rollers to attract, remove and transport chips produced from drilling machines, multi-axis auto lathes, and a mixture of long and thin chips produced from gear cutting machines and broaching machines.

[Features]

- As coolant passes between the rollers, fine chips can be caught.
- Can be installed directly on an oil tank or machine tool.
- Transportation on a sharp inclination is possible.



[mm (in)]

Model	Roller	Roller Revolution	Power Source	Motor	Dimensions						Mass
					L <sub>1</sub>	B	H	L <sub>1</sub>	h <sub>1</sub>	h <sub>2</sub>	
MCOL-R1505	φ100×150 13 pcs	15/18rpm (50/60Hz)	3-phase 200/220 VAC	100W	440 (17.3)	320	700	1220 (48.0)	1000 (39.3)	250 (9.84)	110kg/242 lb
MCOL-R1510	φ100×150 18 pcs				1000 (39.7)	(12.6)		1780 (70.0)			150kg/330 lb
MCOL-R2505	φ100×250 13 pcs				440 (17.3)	420	(27.5)	1220 (48.0)			160kg/352 lb
MCOL-R2510	φ100×250 18 pcs				1000 (39.7)	(16.5)		1780 (70.0)			190kg/418 lb

Model **HSR-PU** MAGNETIC PREFILTER WITH PUMP



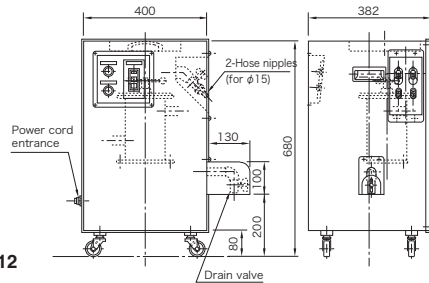
Extended Life!  
Revolution in Filtering for Wire Electric Discharge Machines!

[Application]

This prefilter collects fine iron powder in machining fluid during fluid circulation inside the machining tanks of wire electric discharge machines to prolong the service life of filters. It can also be used for honing machines and hydraulic circuits (under no pressure).

[Features]

- This prefilter has a pump and therefore can be installed simply by connecting hoses (two hoses) to a machining fluid tank. It can be installed in any place and handled easily.
- The powerful magnetism of a rare earth magnet improves the sludge collecting rate.
- The safe construction with the powerful mag-net fixed facilitates cleaning.
- The incorporated integrating timer tells when to clean.



■ Model : HSR-PU12 ■ Processing capacity: Approx. 1.5 /min. ■ Pump rating: 3-phase, 200 VAC, 0.4 kW  
■ Weight: Approx. 60 kg (133 lb)

Caution: For use for kerosene machining fluids, please contact us.

Model **HS** MAGNETIC PREFILTER



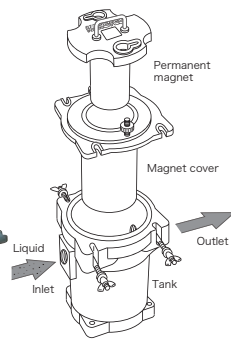
HS-17

[Application]

This prefilter removes fine iron powder from discharging liquid of wire cut electro discharge machine (WCEDM). Install this prefilter between a wire electric discharge machine and a pump unit.

[Features]

- Powerful magnet prefiltrates fine iron powder from the discharging liquid and thus extends, two times, the service life of paper filter.
- Prefilter recovers other impurities as well as it attracts fine iron powder. Consequently, paper filter can be replaced with such filter with more coarse mesh than conventionally.
- Its duplex construction facilitates removal of fine iron powder.



Magnet unit with sludge sticking pulled out of the tank.

Model	Dimensions	Connecting Port	Mass
HS-17	φ190 (7.48) × 190 (7.48)	1 1/2	11kg/24 lb

※Hose nipple 1-1/2, and 3/4, bushing 1-1/2×3/4 are optionally supplied.

MAGNETIC TOOLS FOR WELDING OPERATION

LIFTING MAGNET

MAGBORE

CHIP & SLUDGE TRANSPORTERS

ENVIRONMENTAL EQUIPMENT

MAGNETIZERS AND DEMAGNETIZERS

MAGNETIC EQUIPMENT FOR TRANSPORTATION

MAGNETIC SEPARATORS

HIGH-GRADE MAGNETIC SEPARATORS

MEASURING TOOLS

MEASURING INSTRUMENTS

MAGNETIC MATERIALS