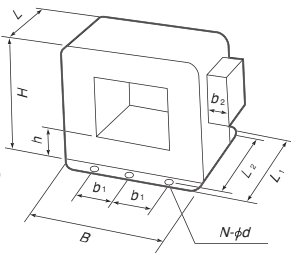


MAGNETIC TOOLS FOR WELDING OPERATION  
 LIFTING MAGNET  
 MAGBONE  
 CHIP & SLUDGE TRANSPORTERS EQUIPMENT  
 ENVIRONMENTAL DEMAGNETIZERS AND MAGNETIC EQUIPMENT FOR TRANSPORTATION  
 MAGNETIC SEPARATORS  
 HIGH GRADE MAGNETIC TOOLS  
 MEASURING INSTRUMENTS  
 MAGNETIC MATERIALS

## Model KMDT TUNNEL TYPE DEMAGNETIZER



### [Application]

These demagnetizers can meet such demagnetizing needs as passing a bucket containing a large number of small workpieces and being incorporated in a line for continuous demagnetizing by conveyor transportation.

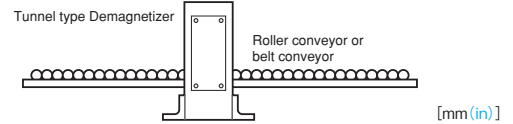
Various sizes are available to meet such requirements. They can also be used to demagnetize long workpieces and irregularly shaped workpieces.

### [Features]

- The good heat radiation design enables continuous operation.
- A uniform demagnetizing area can be obtained.
- Almost uniform demagnetization can act on the whole periphery of passing workpieces.

### An example of application of KMDT

**Caution:** The conveyor must be made of nonmagnetic stainless steel or plastic.



Model	Power Source	Source Capacity (Current)	Gate		Dimensions										Mass	Cable (2RNCT)
			Width	Height	B	L	H	b <sub>1</sub>	N	φd	b <sub>2</sub>	L <sub>1</sub>	L <sub>2</sub>	h		
KMDT-10A	Single-phase 200 VAC 50/60Hz	0.46kVA (2.3A)	100 (3.93)	80 (3.15)	210 (8.26)	103 (4.05)	205 (8.07)	60 (2.36)	4 (0.15)	9.5 (0.37)	40 (1.57)	153 (6.02)	133 (5.23)	70 (2.75)	15kg/33.3 lb	1.25mm <sup>φ</sup>
KMDT-16A		1.6kVA (8A)	160 (6.29)	125 (4.92)	280 (11.0)	144 (5.66)	245 (9.64)	80 (3.15)	6 (0.23)	12 (0.47)	70 (2.75)	204 (8.03)	180 (7.08)	60 (2.36)	32kg/70.5 lb	
KMDT-25A		6kVA (25A)	250 (9.84)	200 (7.87)	400 (15.7)	224 (8.81)	350 (13.7)	150 (5.90)				6 (0.23)	12 (0.47)	70 (2.75)	284 (11.1)	260 (10.2)
KMDT-40A		11kVA (55A)	400 (15.7)	315 (12.4)	540 (21.2)	304 (11.9)	460 (18.1)	200 (7.87)	6 (0.23)	12 (0.47)	70 (2.75)				384 (15.1)	350 (13.7)

※The cable and switch are not provided. ※A different-voltage type (special type) is also available.

## Model KMDTR TUNNEL TYPE DEMAGNETIZER

### Made to order



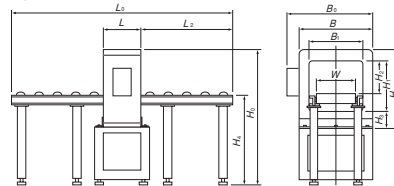
KMDTR-40A

### An example of fabrication

Power unit optional

### [Application]

This model allows large and heavy workpieces to pass through the demagnetizing area at a nearly constant speed, though manual feed, on a roller conveyor. No extra manpower is required for repeating work, enhancing the demagnetizing efficiency.



Model	Power Source	Source Capacity (Current)	Working Rate	Dimensions													
				Conveyor		Demagnetizer			Major Dimensions								
				L <sub>0</sub>	W	L	B	H	L <sub>0</sub>	B <sub>0</sub>	B <sub>1</sub>	H <sub>0</sub>	H <sub>1</sub>	H <sub>2</sub>	H <sub>3</sub>	H <sub>4</sub>	
KMDTR-16A	Single-phase 200 VAC 50/60Hz	0.46kVA (2.3A)	100% ED	90 (3.54)	144 (5.66)	280 (11.0)	245 (9.64)	245 (9.64)	928 (36.5)	320 (12.6)	160 (6.29)	720 (28.4)	125 (4.92)	60 (2.36)	60 (2.36)	600 (23.6)	
KMDTR-25A		6kVA (25A)		150 (5.90)	224 (8.81)	400 (15.7)	350 (13.7)	350 (13.7)	888 (34.9)	470 (18.5)	95.4 (3.75)	795 (31.3)	78.7 (3.10)	120 (4.72)	75 (2.95)		
KMDTR-40A		11kVA (55A)		305 (12.0)	304 (11.9)	540 (21.2)	460 (18.1)	460 (18.1)	848 (33.4)	610 (24.0)	400 (15.7)	905 (35.6)	315 (12.4)	235 (9.25)			

※A different-voltage type (special type) is also available.

## Model KMDTC TUNNEL TYPE DEMAGNETIZER

### Made to order

### An example of fabrication

Mounting base optional

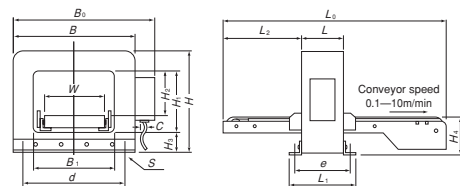


KMDTC-25A



### [Application]

Recommended where a large amount of workpieces such as parts needs to be demagnetized continuously during transfer between processes. Various types can be selected according to the mass and amount of workpieces.



Model	Power Source	Source Capacity (Current)	Working Rate	Motor	Dimensions																
					Conveyor		Demagnetizer			Major Dimensions											
					L <sub>0</sub>	W	L	B	H	L <sub>1</sub>	L <sub>2</sub>	B <sub>0</sub>	B <sub>1</sub>	H <sub>1</sub>	H <sub>2</sub>	H <sub>3</sub>	H <sub>4</sub>	C	d	e	s
KMDTC-10A	Single-phase 200 VAC 50/60Hz	0.46kV (2.3A)	100% ED	25W	800 (31.5)	70 (2.75)	103 (4.05)	210 (8.26)	205 (8.07)	153 (6.02)	200 (7.87)	250 (9.84)	100 (3.93)	80 (3.15)	30 (1.18)	70 (2.75)	120 (4.72)	φ12 (0.47)	120 (4.72)	133 (5.23)	4(0.15) φ9.5 (3.74)
KMDTC-16A		1.6kVA (8A)			1000 (39.3)	120 (4.72)	144 (5.66)	280 (11.0)	245 (9.64)	204 (8.03)	400 (15.7)	320 (12.6)	160 (6.29)	125 (4.92)	50 (1.96)	60 (2.36)	135 (5.31)	φ16 (0.62)	160 (6.29)	180 (7.08)	4(0.15) φ12 (0.47)
KMDTC-25A		6kVA (30A)			1500 (59.0)	200 (7.87)	224 (8.81)	400 (15.7)	350 (13.7)	284 (11.1)	500 (19.6)	470 (18.5)	250 (9.84)	200 (7.87)	125 (4.92)	75 (2.95)	150 (5.90)	φ20 (0.78)	150 (5.90) ×2	260 (10.2)	6(0.23) φ12 (0.47)
KMDTC-40A		11kVA (55A)			300 (11.8)	304 (11.9)	540 (21.2)	460 (18.1)	384 (15.1)	500 (19.6)	610 (24.0)	400 (15.7)	315 (12.4)	240 (9.44)	75 (2.95)	150 (5.90)	φ26 (1.02)	200 (7.87) ×2	350 (13.7)	6(0.23) φ14 (0.55)	

※Depending on workpieces, they may be pulled back in some cases by a demagnetizing force. In such a case, a belt with special scrapers need to be used. Please consult with us in advance.

※A different-voltage type (special type) is also available.