

MAGNETIC TOOLS FOR WELDING OPERATION
 LIFTING MAGNET
 MAGBORE
 CHIP & SLUDGE TRANSPORTERS
 ENVIRONMENTAL EQUIPMENT
 MAGNETIZERS AND DEMAGNETIZERS FOR TRANSPORTATION
 MAGNETIC SEPARATORS
 HIGH GRADE MAGNETIC SEPARATORS
 MEASURING TOOLS
 MEASURING INSTRUMENTS
 MAGNETIC MATERIALS

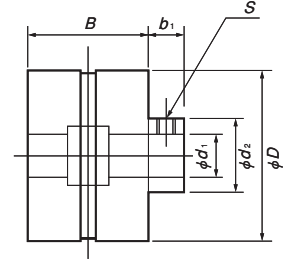
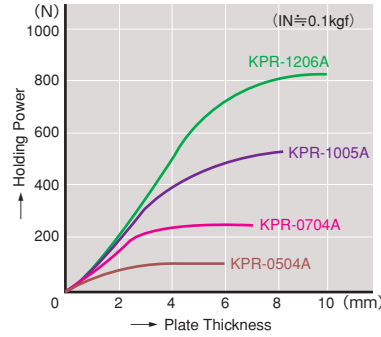
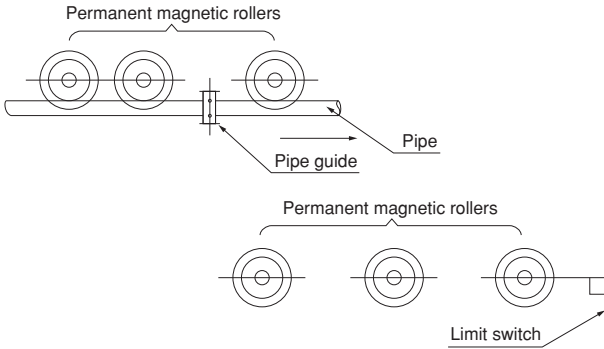


Model KPR-A SMALL PERMANENT MAGNETIC ROLLER

The magnetic rollers that are frequently used for transportation (including transportation stopping) of steel pipes and they have been standardized and kept in stock.

⚠ Precaution for use

These products are assembled by bonding. For high temperature services and rubber lining, structural restrictions must be taken into consideration. Please contact us for more information.



Model	Dimensions [mm (in)]						Mass
	D	B	d ₁	b ₁	S	d ₂	
KPR-0504A	50 (1.96)	35 (1.37)	12(0.47)	10 (0.39)	M5	22(0.86)	0.45kg/0.99 lb
KPR-0704A	70 (2.75)	40 (1.57)	20(0.78)	12 (0.47)	M6	35(1.37)	1.0 kg/2.20 lb
KPR-1005A	100 (3.93)	50 (1.96)	30(1.18)			45(1.77)	2.4 kg/5.29 lb
KPR-1206A	120 (4.72)	60 (2.36)	40(1.57)	16 (0.62)	M8	60(2.36)	3.8 kg/8.39 lb

※A powerful model, KPR-H (12,000G), is also available.

Model KER ELECTROMAGNETIC ROLLER

[Application]

This model employs a powerful electromagnet and its optimum design helps increase the efficiency of transportation of steel pipes and steel plates.

[Features]

- The electromagnetic rollers can easily be turned on and off or adjusted in magnetic force for easy attracting and repelling of iron products.

<Specification>

- For the standard type dimensions, refer to the electromagnetic pulley KER.

Model KPR PERMANENT MAGNETIC ROLLER

[Application]

Most suitable for holding thin steel plates of 0.2 to 0.4 mm thick such as printing rollers.

<Manufacturing range>

Diameter: ϕ 100—200mm

Length: 300—1000mm

For length longer than 800 mm, the diameter needs to be ϕ 180 mm or larger.

<Specification>

750 rpm max.

Remarks In case balance adjustments are required, please contact Kanetec.

Please refer to Facsimile communication Form.

