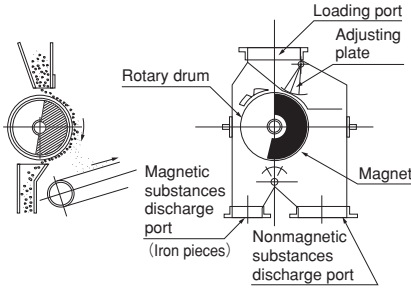


## Model KDS DRUM TYPE MAGNETIC SEPARATOR

MAGNETIC TOOLS FOR WELDING OPERATION  
 LIFTING MAGNET  
 MAGCORE  
 CHIP & SLUDGE TRANSPORTERS  
 ENVIRONMENTAL EQUIPMENT  
 MAGNETIZERS AND DEMAGNETIZERS  
 MAGNETIC EQUIPMENT FOR TRANSPORTATION  
 MAGNETIC SEPARATORS  
 HIGH GRADE MAGNETIC SEPARATORS  
 MEASURING TOOLS  
 MEASURING INSTRUMENTS  
 MAGNETIC MATERIALS



KDS-300C



### [Application]

A motor-driven magnetic separating system designed with a permanent magnetic drum housed in a casing, automatically removes and collects iron pieces, bolts, etc. from raw materials loaded from a hopper.

### [Features]

- Very easy to handle.
- Compact and light weight for easy relocation and installation.
- The powerful magnetic force type having a large processing capacity.
- Series below are also available.

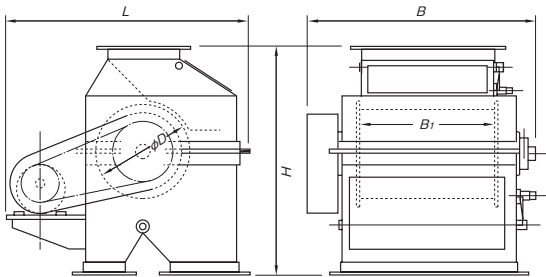
KDS-HA-C 180mT (1800G)  
 HC-C 300mT (3000G)  
 HE-C 500mT (5000G)

[mm(in)]

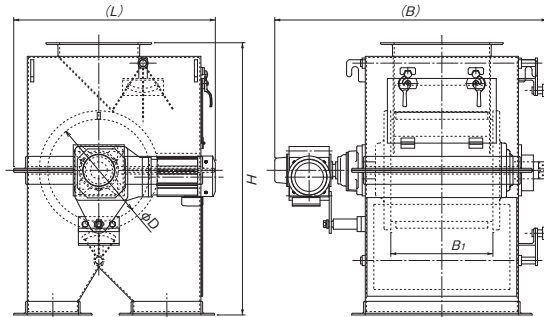
Model	Flow Capacity	Dimensions			Drum		Magnetic Flux Density	Motor	Mass
		L	B	H	$\phi D$	$B_1$			
KDS-250C	15m <sup>3</sup> /h	540 (21.2)	700 (27.5)	725 (28.5)	250 (9.84)	250 (9.84)	90mT (900G)	0.2kW	125kg / 275 lb
KDS-300C	25m <sup>3</sup> /h		800 (31.4)			300 (11.8)			150kg / 330 lb
KDS-500C	40m <sup>3</sup> /h	590 (23.2)	950 (37.4)	800 (29.5)	300 (11.8)	450 (17.7)	100mT (1000G)	0.4kW	230kg / 507 lb
KDS-600C	50m <sup>3</sup> /h		1100 (43.3)			600 (23.6)			350kg / 771 lb
KDS-800B	75m <sup>3</sup> /h	930 (36.6)	1000 (39.3)	850 (33.4)	400 (15.7)	680 (26.7)			450kg / 992 lb
KDS-900B	90m <sup>3</sup> /h		1150 (45.2)			830 (32.6)			550kg / 1213 lb
KDS-1100B	105m <sup>3</sup> /h	1150 (45.2)	1000 (39.3)	1100 (43.3)	500 (19.6)	680 (26.7)			600kg / 1323 lb
KDS-1200B	125m <sup>3</sup> /h		1150 (45.2)			830 (32.6)	740kg / 1631 lb	0.75kW	

\*These models can be tested in advance.

\*Volume for treatment is just a standard/target. Depending of materials to be treated, it can be smaller/ fewer than the described volume.



(KDS-C)



(KDS-B)

### An example of fabrication of KDS-300B-2-S 2-stage drum magnetic separator

