

# HIGH GRADE MAGNETIC SEPARATORS

## Model PCMBD-A SUPER POWERFUL MAGNETIC BAR (DOUBLE TYPE)

An example of special spec PCMBD-A



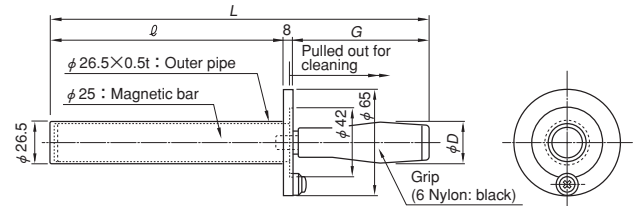
PCMBD-A20

### [Application]

Most suitable for cleaning where a relatively large amount of iron powder, etc. is mixed.

### [Features]

- As these bars have an outer pipe, attracted iron powder smoothly drops when the magnetic bar is pulled out.
- The outer pipe and the magnetic bar have a flange. When the magnetic bar is housed, two flanges become one piece to prevent intrusion of foreign matter to the inside of the magnetic bar and to prevent the magnetic bar from coming out.
- The magnetic bar has an easy-to-hold plastic grip.



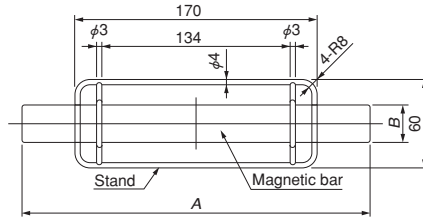
Model	Surface Material	Surface Finish	Surface Max. Magnetic Flux Density	Working Temperature	External Dimensions				Mass
					L	l	G	D	
PCMBD-A13	SUS 304	# 400 buffed	0.8T (8000G) min.	Upper limit 80°C (176°F)	216	125	83	24	0.8kg/1.7 lb
(8.50)					(4.92)	1.1kg/2.4 lb			
PCMBD-A20					285	194	(3.26)	(0.94)	1.3kg/2.8 lb
(11.2)					(7.63)				
PCMBD-A25					352	244	100	28	1.5kg/3.3 lb
(13.8)	(9.60)				403	295	(3.93)	(1.10)	1.5kg/3.3 lb
(15.8)	(11.6)								

\*A type having a surface maximum magnetic flux density of 0.95 T (9500 G) is also available. (Optional)

## Model PCMB-S SANITARY TYPE MAGNETIC BAR (STAND TYPE)

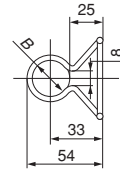


PCMB-S20



### [Features]

A stand is provided with the sanitary magnet bar. Can be installed in a liquid tank for collection and removal of iron particles.



[mm (in)]

### Ejector type VPU-E

Model	Dimensions		Material	Surface Finish		Built-in Permanent Magnet	Surface Max. Magnetic Flux Density	Working Temperature Upper Limit	Mass
	A	B		Magnetic bar	Stand				
PCMB-S20	194 (7.63)	phi 25 (0.98)	SUS304	# 400 buffed	Electrolytic polishing	Nd rare earth type / Property value 1.2 T (12,000 G)	0.8T (8000G)	80°C (176°F)	0.6kg/1.32 lb
PCMB-S25	244 (9.60)								0.65kg/1.43 lb
PCMB-S30	295 (11.6)								0.7kg/1.50 lb

### Heat-resistant powerful type

Model	Dimensions		Material	Surface Finish		Built-in Permanent Magnet	Surface Max. Magnetic Flux Density	Working Temperature Upper Limit	Mass
	A	B		Magnetic bar	Stand				
PCMB-TS20	194 (7.63)	phi 25 (0.98)	SUS304	# 400 buffed	Electrolytic polishing	Nd rare earth type / Property value 1.1 T (11,000 G)	0.8T (8000G)	240°C (464°F)	0.6kg/1.32 lb
PCMB-TS25	244 (9.60)								0.65kg/1.43 lb
PCMB-TS30	295 (11.6)								0.7kg/1.50 lb

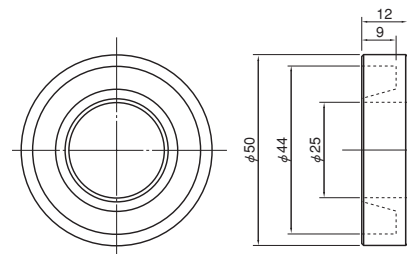
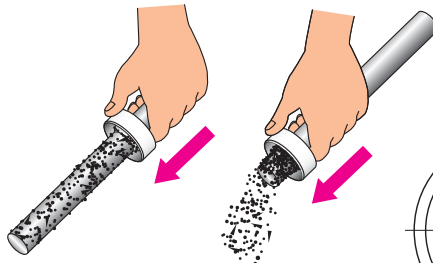
### Super powerful type

Model	Dimensions		Material	Surface Finish		Built-in Permanent Magnet	Surface Max. Magnetic Flux Density	Working Temperature Upper Limit	Mass
	A	B		Magnetic bar	Stand				
PCMB-AS20	194 (7.63)	phi 25 (0.98)	SUS304	# 400 buffed	Electrolytic polishing	Nd rare earth type / Property value 1.35 T (13,500 G)	1T (10000G)	80°C (176°F)	0.6kg/1.32 lb
PCMB-AS25	244 (9.60)								0.65kg/1.43 lb
PCMB-AS30	295 (11.6)								0.7kg/1.50 lb

## Model PCMB-K SCRAPER FOR REMOVING IRON POWDER



PCMB-K25



### [Application]

A scraper for a sanitary type magnetic bar to scrape iron powder.

### [Features]

- A groove is provided to receive iron powder so that it does not scatter.
- When this is installed on each end of a sanitary type magnetic bar, they serve as a stand also.

[mm (in)]

Model	Casing (Material)	Applicable Magnetic Bar Dia
PCMB-K25	Teflon	phi 25 (0.98)

MAGNETIC TOOLS FOR WELDING OPERATION  
 LIFTING MAGNET  
 MAGBONE  
 CHIP & SLUDGE TRANSPORTERS  
 ENVIRONMENTAL MAGNETIZERS AND DEMAGNETIZERS  
 MAGNETIC EQUIPMENT FOR TRANSPORTATION  
 MAGNETIC SEPARATORS  
 HIGH GRADE MAGNETIC TOOLS  
 MEASURING INSTRUMENTS  
 MAGNETIC MATERIALS