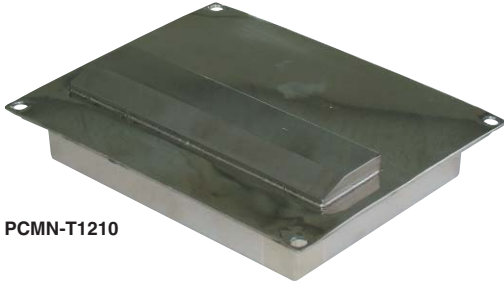


Model **PCMN** SANITARY TYPE PLATE MAGNET



PCMN-T1210

[Application]

Flat type

This type is installed in critical places of nonmagnetic ducts to catch iron in flowing raw materials. When the magnet is removed after raw materials have passed, the magnetic force is canceled and only iron can be collected.

[Features]

- High grade finish of sanitary specification.
- These magnets are completely enclosed and therefore can be installed in fluid.
- Powerful as a rare earth magnet having a property value of 1.2 T is built in.

Type with template

This type is installed on chutes and hoppers to separate/collect iron in bulk materials such as foods and chemicals. The template holds caught iron against the pressure of flowing raw materials and keeps accumulating such iron.

Powerful plate magnet

Flat type

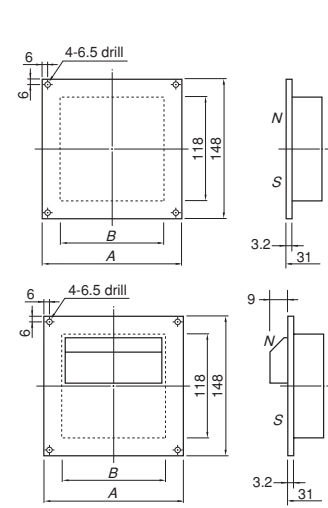
Model	Dimensions		Material	Surface Finish	Built-in Permanent Magnet	Surface Max. Magnetic Flux Density	Working Temperature Upper Limit	Mass
	A	B						
PCMN-1205	85 (3.34)	55 (2.16)	SUS304	#400 buffed	Nd rare earth type Property value 1.2 T (12,000 G)	0.45T (4500G)	80°C (176° F)	1.8kg/3.96 lb
PCMN-1210	135 (5.31)	105 (4.13)						3.1kg/6.83 lb
PCMN-1215	185 (7.28)	156 (6.14)						5.0kg/11.0 lb
PCMN-1220	235 (9.25)	207 (8.15)						6.0kg/13.2 lb
PCMN-1225	290 (11.4)	258 (10.1)						7.1kg/15.6 lb
PCMN-1230	340 (13.3)	309 (12.1)						8.6kg/18.9 lb

※ These magnets can be used in liquids that do not cause chemical reaction with the material of the magnets.

Type with template

Model	Dimensions		Material		Surface Finish	Built-in Permanent Magnet	Surface Max. Magnetic Flux Density	Working Temperature Upper Limit	Mass
	A	B	Main Unit	Template					
PCMN-T1205	85 (3.34)	55 (2.16)	SUS304	SUS304	#400 buffed	Nd rare earth type Property value 1.2 T (12,000 G)	0.9T (9000G)	80°C (176° F)	2.0kg/4.40 lb
PCMN-T1210	135 (5.31)	105 (4.13)							3.4kg/7.49 lb
PCMN-T1215	185 (7.28)	156 (6.14)							5.5kg/12.1 lb
PCMN-T1220	235 (9.25)	207 (8.15)							6.6kg/14.5 lb
PCMN-T1225	290 (11.4)	258 (10.1)							7.9kg/17.4 lb
PCMN-T1230	340 (13.3)	309 (12.1)							9.5kg/21.0 lb

※ These magnets can be used in liquids that do not cause chemical reaction with the material of the magnets.



Model **PCMN-HU** SUSPENDED POWERFUL CLEAN PLATE MAGNET

[Application]

These magnets are suspended above a conveyor to attract and remove iron pieces, etc. from foods being conveyed.

[Features]

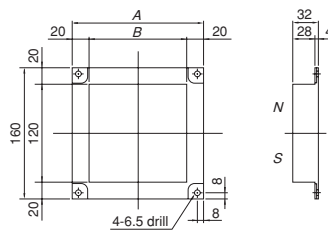
- These magnets are a suspension version of the conventional powerful plate magnet and can easily be used in fluid.
- Four eyebolts are included.

Powerful plate magnet

Suspension type

Model	Dimensions		Material	Surface Finish	Built-in Permanent Magnet	Surface Max. Magnetic Flux Density	Working Temperature Upper Limit	Mass
	A	B						
PCMN-HU1205	97 (3.81)	57 (2.24)	SUS304	#400 buffed	Nd rare earth type Property value 1.2 T (12,000 G)	0.45T (4500G)	80°C (176° F)	2.3kg/5.07 lb
PCMN-HU1210	148 (5.82)	108 (4.25)						3.8kg/8.39 lb
PCMN-HU1215	199 (7.83)	159 (6.26)						6.0kg/13.2 lb
PCMN-HU1220	249 (9.80)	209 (8.22)						7.1kg/15.6 lb
PCMN-HU1225	300 (11.8)	260 (10.2)						8.2kg/18.1 lb
PCMN-HU1230	351 (13.8)	311 (12.2)						9.9kg/21.8 lb

※ These magnets can be used in liquids that do not cause chemical reaction with the material of the magnets.



Model **PCMN-TF** SANITARY TYPE PLATE MAGNET WITH WEAR-RESISTANT COATING



Miracle 1.4 Tesla (14,000 Gauss) realized

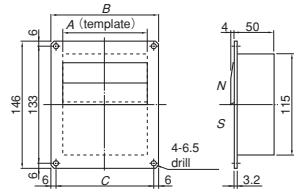
[Features]

- A uniform magnetic field is generated over the entire poles having a certain width.
- A magnetic flux density of 1.4 Tesla (14,000 Gauss) far exceeding conventional powerful magnets has been realized.
- Compared with the N-S-N-S structure of magnetic bars, the effective magnetic poles are 100% to provide a sure separation effect.

- The employment of a sharp gradient construction enables it to continuously catch fine iron powder that cannot be caught by conventional iron-removing magnets.
- These magnets have been treated by Kanetec's original surface treatment technology to become highly resistant to wear and corrosion.

[mm (in)]

Model	Dimensions			Material	Surface Finish	Built-in Permanent Magnet	Surface Max. Magnetic Flux Density	Working Temperature Upper Limit	Mass
	A	B	C						
PCMN-TF1205	55 (2.16)	85 (3.34)	73 (2.87)	SUS304	#400 buffed	Nd rare earth type Property value 1.2 T (12,000 G)	1.4T (14000G)	80°C (176° F)	2.5kg/5.51 lb
PCMN-TF1210	105 (4.13)	135 (5.31)	123 (4.84)						5.0kg/11.0 lb
PCMN-TF1215	156 (6.14)	185 (7.28)	173 (6.81)						7.5kg/16.5 lb
PCMN-TF1220	207 (8.15)	235 (9.25)	223 (8.77)						10.0kg/22.0 lb
PCMN-TF1230	309 (12.1)	340 (13.3)	328 (12.9)						15.0kg/33.0 lb



MAGNETIC TOOLS FOR WELDING OPERATION
LIFTING MAGNET
MAGBORE
CHIP & SLUDGE TRANSPORTERS
ENVIRONMENTAL EQUIPMENT
MAGNETIZERS AND DEMAGNETIZERS
MAGNETIC EQUIPMENT FOR TRANSPORTATION
MAGNETIC SEPARATORS
HIGH-GRADE MAGNETIC SEPARATORS
MEASURING TOOLS
MAGNETIC MATERIALS