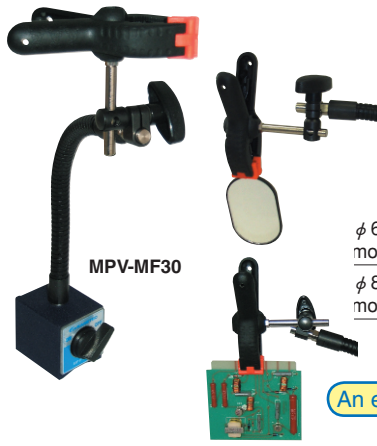


Model MPV-MF FLEXIBLE HOLDER

ELECTROMAGNETIC CHUCKS
ELECTROMAGNETIC CHUCK CONTROLLERS
PERMANENT MAGNETIC CHUCKS
PERMANENT ELECTROMAGNETIC CHUCKS



Universal use! Convenient multi clammer !!

Patent pending

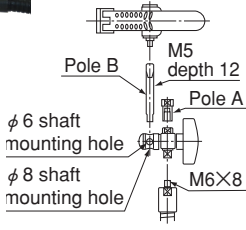
Parts for sale!

[Application]

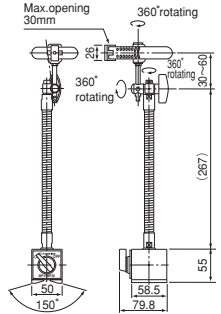
Suitable for auxiliary clamping of parts or tools during machining or assembling work.

[Features]

- Due to various connection options for holding metal parts, application in various use is excellent. In addition to main clammer, shaft of dia. 6. dia. 8 can be fixed.
- Top flexible edge : M6 male screw, top pole edge: M5 male screw parts can be changed.
- Magnetic base with on/off switch makes setting and removing easily done.



An example of mounting



Model	Holding Power	Allowable holding weight	Mass
MPV-MF30	784N (80kgf)	0.6kg	1.4kg/3.08 lb

*clammer with supporting rod is sold separately.
*Clammer can clamp a work piece which length is shorter than 30mm.

Model MPV-CL FLEXIBLE CLAMP

BLOCKS FOR MC
VACUUM CHUCKS
PROMELTA SYSTEM



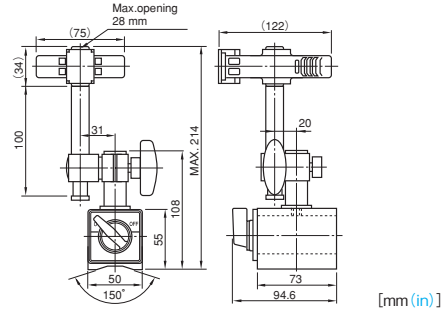
Parts for sale!

[Application]

Suitable for soldering of circuit board of electric parts.
Suitable for holding parts during assembly.
Suitable for wiring as it can clamp electric cables.

[Features]

- The employment of a powerful ON/OFF selectable magnet holder facilitates installation on iron-made worktables and worktables of machine tools.
- The clamp parts are equipped with tough plastic clammers and can be tilted freely.
- The clammers open 28 mm maximum and can be moved up and down in a range of about 90 mm. The clammers are exchangeable. (Optional)



Model	Holding Power	Mass
MPV-CL30	1000N (100kgf)	2.7kg/6.0 lb

*The holding power applies to SS400, thickness 10 mm and ground surface.

Model MPV-F FLEXIBLE VICE

SINE BAR CHUCKS
MAGNETIC BLOCKS
WORKING TOOLS



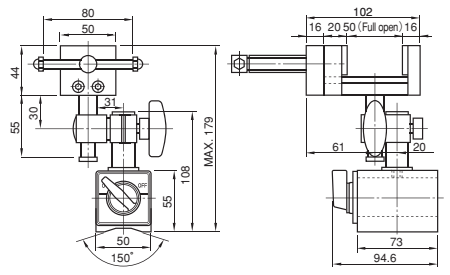
Parts for sale!

[Application]

Suitable for temporarily holding workpieces during assembly.
Suitable for such jobs as manual filing and drilling and tapping of nonmagnetic materials.

[Features]

- The employment of a powerful ON/OFF selectable magnet holder facilitates installation on iron-made worktables and worktables of machine tools.
- The vice can be tilted freely to secure workpieces according to their shapes and machining directions.
- The plates on the workpiece clamping parts are made of nylon to hold non-flat workpieces strongly. The plates are exchangeable. (Optional)

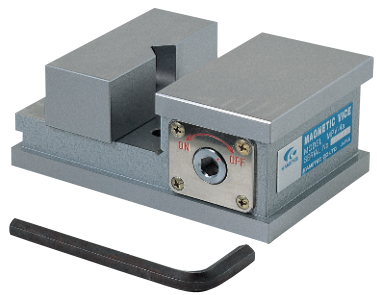


Model	Holding Power	Mass
MPV-F50A	78N (80kgf)	2.7kg/6.0 lb

*The holding power applies to SS400, thickness 10 mm and ground surface.

Model MPV MAGVICE*

MEASURING TOOL HOLDERS
MAGNETIC HOLDERS
MAGNETIC TOOLS

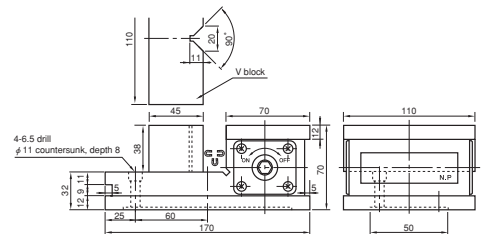


[Application]

Suitable for securing irregular shaped workpieces or tapered workpieces and for machining end faces of round bars and flat workpieces.

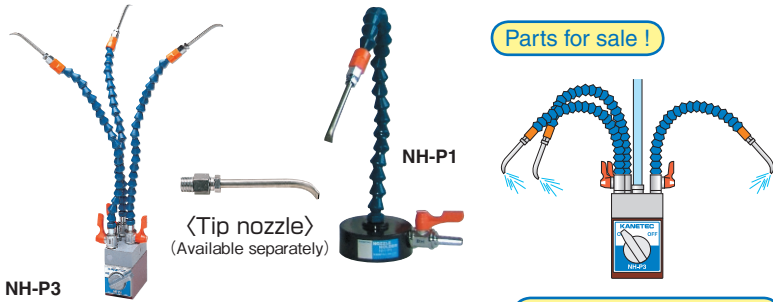
[Features]

- The force to secure a workpiece is produced by a magnetic force. Thus, unlike mechanical clamping, no undue force is applied. (Nonmagnetic workpieces cannot be held.)
- The select handle can be operated from both sides.
- Can be mounted on a magnetic chuck on a machine.



■ Magnetic force: Side slip resistance is 575 N (57.5 kg) for iron square bars of 30 mm × 30 mm × 130 mm and 480 N (48 kgf) for iron round bars of φ30 × 130 mm thanks to the strong built-in permanent magnet. Thus, the MAGVICE works well in grinding operations also.
■ Mass: 7.3 kg

Model NH MAGNETIC TYPE NOZZLE HOLDER



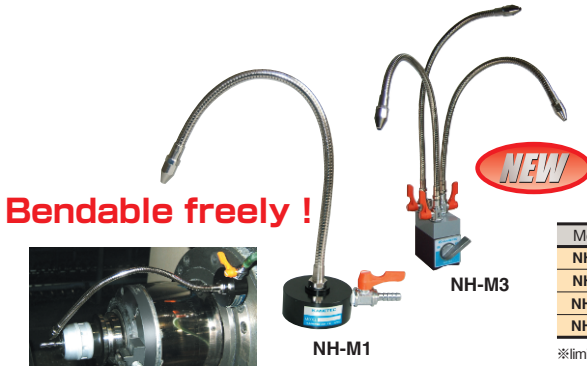
[Application]

This holder is designed for holding a nozzle(s) at the end of cutting oil hose on machine tools. This can also be used to remove by injecting cutting liquid chips and particles produced during electric discharging.

[Features]

- Compared with conventional product, flexibility is extremely improved.
- Flexible part can be universally bent (NH-M1,M3)
- By adopting metal made flexible part, stable holding position is maintained even when providing high pressure air or a large amount of liquid.
- In addition, it is strong against damage by heat caused by cut particle when milling. Its durability is improved (NH-M1,M3).
- Strong holding power enables the holder to be installed at any position.
- A flexible hose enables the nozzle tip to be positioned at any position and angle.
- The employment of a cock allows flowrate adjustment.
- The adjustable hose can be adjusted in length by removing or adding joints.

An example of mounting



Model	Holding Power	Base Size	Inlet Dia	Hose Length	No. of Outlets	Mass
NH-P1	250N (25kgf)	φ 70 (2.75) × 27 (1.06)		390 (15.3)	1	0.95kg/2.1 lb
NH-P3	500N (50kgf)	48 (1.89) × 75 (2.95) × 54 (2.12)	φ 9	420 (16.5)	3	1.65kg/3.6 lb
NH-M1	245N (25kgf)	φ 70 (2.75) × 31 (1.22)	(0.35)	400 (15.7)	1	0.9kg/1.9 lb
NH-M3	490N (50kgf)	48 (1.89) × 75 (2.95) × 54 (2.12)		400 (15.7)	3	1.9kg/4.1 lb

※limit of air in use : For adjustable hose (NH-P1,P3) : 0.34MPa in Air pressure, 0.2MPa in liquid pressure.
 For metal Flexible hose : less than 0.6MPa (limit of flue in use: less than 10Litter/minute). However, depending of release angle, there may be a case where position of a hose can vary by its spouting pressure even though it is within the limit.
 In such a case, please reduce the flowing amount.
 ※The hose length includes the stainless steel nozzle part (70 mm) at the tip.
 ※The holding power applies to SS400, thickness 10 mm and ground surface.
 ※Magnet section of NH-P and NH-M is the same, therefore the upper unit is common when mounting.

NH-M1 An example of mounting

Model MDR MAGNETIC DRESSER



[Application]

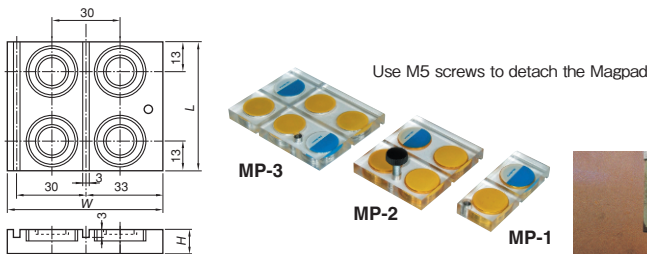
Used for dressing grinding wheels. The dresser can be held firmly on a powerful magnetic holder base. Set-up is easy.

[Features]

- The magnetic force can be turned on and off with the lever to facilitate mounting and dismounting on the machine table. (For setting on a magnetic chuck, power OFF the chuck and power ON this Dresser.)
- The dresser can be mounted to any angle.
- The dresser mounting clamp can be secured to either the side or the top of the magnetic holder base. (The photo shows the clamp mounted on the side.)

Model	Holding Power	Dimensions			Dresser Shaft Dia	Mass
		Width	Length	Height		
MDR-1C	800N (80kgf)	50 (1.96)	58.5 (2.30)	55 (2.16)	φ 11 (0.43) and φ 12 (0.47)	1.2kg/2.64 lb

Model MP MAGPAD*



[Application]

The Magpad is a device to prevent wire breakage by heat due to aerial discharge. It protects wire electrodes of wire electric discharge machines from separation of cooling liquid which is likely to occur at the start of discharging.

This Magpad can also be used to prevent dislocation or dropping of cut workpieces at the start or end of cutting.

[Features]

- The Magpad is made of transparent acrylic plate incorporating powerful magnets. Having a strong holding power, it enables setting wire while monitoring its position.
- No mechanical clamp is required. Attaching and detaching can be done efficiently and without a fear of damaging workpieces.
- Various models are available to suit any workpiece configuration.
- There is no possibility of rusting and the magnetic force is semi-permanent. The Magpad withstands repeated use and therefore is very economical.

Model	Holding Power	Dimensions			Mass
		Width	Length	Height	
MP-1	80N (8kgf)	66	26 (1.02)	9	35g/0.07 lb
MP-2	200N (20kgf)	(2.59)	56 (2.20)	(0.35)	70g/0.15 lb
MP-3	250N (25kgf)		86 (3.38)		110g/0.24 lb

※The holding power applies to SS400, thickness 20 mm and ground surface.

ELECTROMAGNETIC CHUCKS
 CHUCK CONTROLLERS
 PERMANENT MAGNETIC CHUCKS
 PERMANENT ELECTROMAGNETIC CHUCKS
 BLOCKS FOR MC
 VACUUM CHUCKS
 PROMELTA SYSTEM
 SINE BAR CHUCKS
 MAGNETIC BLOCKS
 WORKING TOOLS
 MEASURING TOOL HOLDERS
 MAGNETIC HOLDERS
 MAGNETIC TOOLS