

## Model MT-A MAGSUPPORTER\*

MAGNETIC TOOLS FOR WELDING OPERATION

LIFTING MAGNET

MAGBORE

CHIP & SLUDGE TRANSPORTERS

ENVIRONMENTAL EQUIPMENT

MAGNETIZERS AND DEMAGNETIZERS

MAGNETIC EQUIPMENT FOR TRANSPORTATION

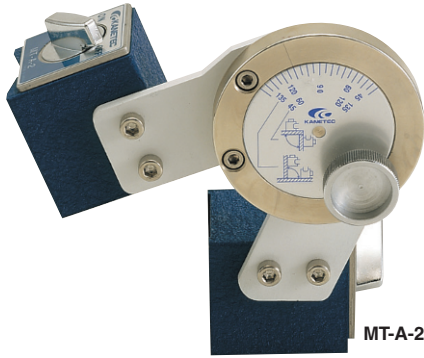
MAGNETIC SEPARATORS

HIGH GRADE MAGNETIC

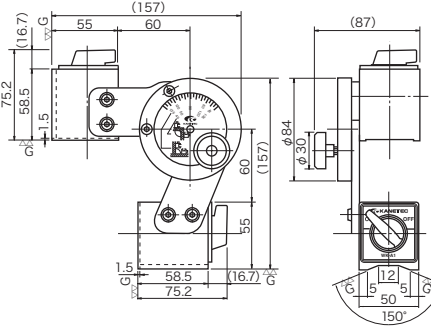
MEASURING TOOLS

MEASURING INSTRUMENTS

MAGNETIC MATERIALS

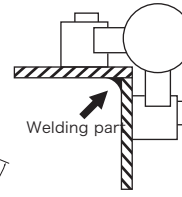


MT-A-2

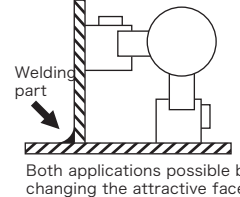


<Note 1>

<Inside welding>



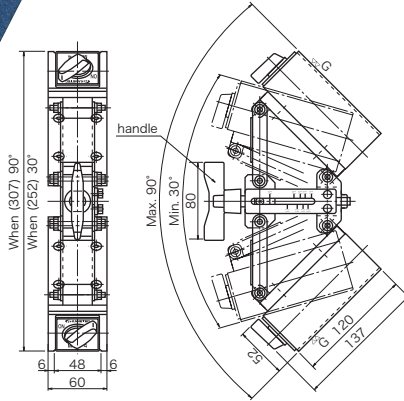
<Outside welding>



Both applications possible by changing the attractive face.



MT-A-4



### [Application]

Suitable for mating and keeping stationary jointing parts of iron sheets and members during welding work.

### [Features]

Powerful holding by use of a high performance permanent magnet.

### MT-A-2

- Both inside and outside welding are possible.

<Note 1>

- Any desired holding angle can be set in a range of 45° and 135° (angle scale provided).
- ON/OFF switchover function and V-groove provided.

### MT-A-4

- Any desired holding angle can be set in a range of 30° and 90° (angle scale provided).

- Angle adjustment with a handle.

- ON/OFF switchover function provided.

[mm (in)]

Model	Holding Power	Holder Dimensions			Angle	Mass
		Width	Length	Height		
MT-A-2	800N (80kgf) × 2	50 (1.96)	60 (2.36)	55 (2.16)	45°—135°	3.5kg/ 7.71 lb
MT-A-4	1500N (150kgf) × 2	60 (2.36)	120 (4.72)	52 (2.04)	30°—90°	5kg/ 11.0 lb

※ The holding power applies to SS400, thickness 10mm and ground surface.

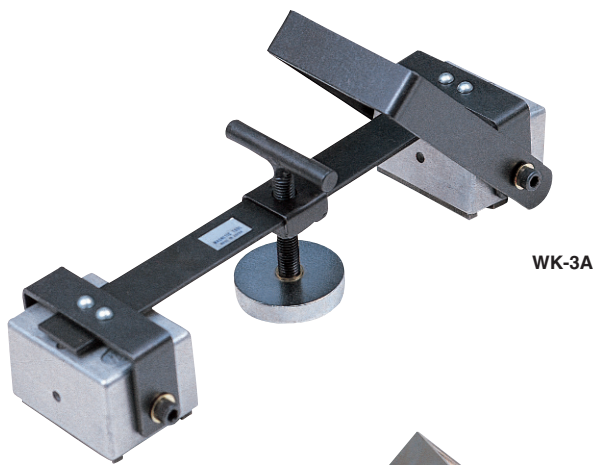
## Model WK WELDING CLAMPER

HIGH GRADE MAGNETIC

MEASURING TOOLS

MEASURING INSTRUMENTS

MAGNETIC MATERIALS



WK-3A



WK-T3A

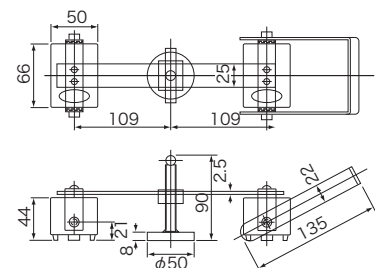
### [Application]

Suitable as holding tools for tentative installation and tack welding on such work sites of construction, bridge, ship building and piping.

### [Features]

- The magnet part has a minimum but enough free rotating angle range for easy mounting on workpieces.
- The exterior of the magnet holder part is made of aluminum to prevent adhesion of iron powder on the top and side faces.
- Model WK-T3A has a construction that is highly resistant to heat.
- These claspers have an enough mechanical strength to withstand rough handling.

### An example of usage



Model	Maximum Temperature	Holding Power	Mass
WK-3A	60°C	1000N (100kgf) × 2	2.3kg/5.07 lb
WK-T3A	180°C		

※ The holding power applies to SS400, thickness 10mm and ground surface.

Model **KM-W** MAGNETIC HOLDER



Holding Power  
**200N**  
KM-06W



Holding Power  
**1300N**  
KM-12W

Usable as a hinge of thin plates and simple jig for welding operations.

[Application]

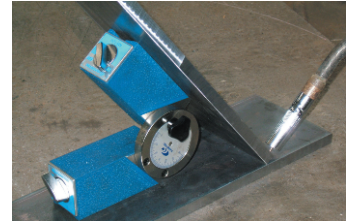
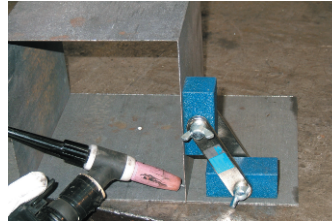
Suitable for tentative holding during drilling and assembly.

[Features]

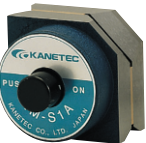
- Two magnets as a pair for easy angle setting.
- An angle scale provided. (KM-12W)
- The magnetic force can be turned on and off by operating the lever. (KM-12W)
- The V-groove allows the holder to be attached to certain poles and curved surfaces in addition to the flat surface. (KM-12W)

Model	Holding Power	Holder Dimensions			Angle	Length	Mass
		Width	Length	Height			
KM-06W	200N (20kgf)	26 (1.02)	60 (2.36)	25 (0.98)	129 (5.07)	Free	0.7kg/1.54 lb
KM-12W	1300N (130kgf)	50 (1.96)	117 (4.60)	55 (2.16)	273 (10.75)		4.5kg/9.92 lb

※ The holding power applies to SS400, thickness 10mm and ground surface.



Model **KM-SA** HEXAGONAL MAGNETIC HOLDER



KM-S1A

Holding Power  
Round steel **200~300N**  
Steel plate **200~600N**

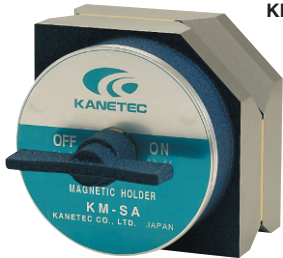


[Application]

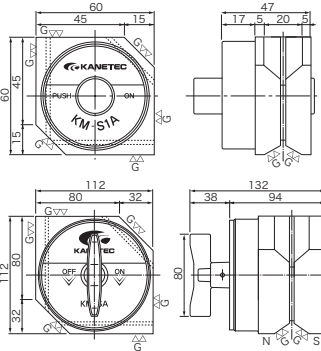
These holders provide a strong holding power for tentative holding during welding and tentative assembly. These holders can also be used as a block.

[Features]

- The holding angle can be set to 45°, 90° and 135°.
- The small type is equipped with a pushbutton and the large type with a rotary handle for turning on and off the magnetic force.



KM-SA



Holding Power  
Round steel **600~900N**  
Steel plate **1200~1400N**

Model	Holding Power		Dimensions	Mass
	Round Steel	Steel Plate		
KM-SA	600—900N (60—90kgf)   150—200N (15—20kgf)	1200—1400N (120—140kgf)   800—1000N (80—100kgf)	112(4.40) × 112(4.40) × 94(3.70)	6.0kg/ 13.2 lb
KM-S1A	200—300N (20—30kgf)   50—70N (5—7kgf)	200—600N (20—60kgf)   100—350N (10—35kgf)	60(2.36) × 60(2.36) × 42(1.65)	0.85kg/ 1.87 lb

※ The holding power applies to iron plate, SS400, 10mm thickness, and ground surface.

Note: The holding power in { } is for attraction on one face in the case of double-face attraction.

Model **KM-S** HEXAGONAL MAGNETIC HOLDER



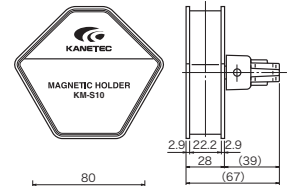
Holding Power  
Steel plate **160~260N**  
KM-S10

[Application]

Usable to temporarily hold and assemble workpieces during welding. These holders hold workpieces firmly.

[Features]

- The workpiece holding angle can be selected from 15°, 45°, 60°, 90°, 105° and 120°.
- The magnetic force can be turned on and off.
- The holding power on steel plates is about the same as when both faces of KM-S9 and S12 are used and at angles other than 105°, the holding power does not drop when two faces are used.



Model

[mm (in)]

Holding Power  
Steel plate **250~450N**  
KM-S13



Model	Holding Power	Dimensions	Mass
	Steel Plate		
KM-S10	150—250N (15—25kgf)	104(4.09) × 95(3.74) × 67(2.63)	0.9kg/1.98 lb
KM-S13	250—450N (25—45kgf)	132(5.19) × 120(4.72) × 73(2.87)	1.6kg/3.52 lb

※ The holding power applies to iron plate, SS400, 10mm thickness, and ground surface.

MAGNETIC TOOLS FOR WELDING OPERATION

LIFTING MAGNET

MAGBORE

CHIP & SLUDGE TRANSPORTERS

ENVIRONMENTAL EQUIPMENT

MAGNETIZERS AND DEMAGNETIZERS

MAGNETIC EQUIPMENT FOR TRANSPORTATION

MAGNETIC SEPARATORS

HIGH-GRADE MAGNETIC SEPARATORS

MEASURING TOOLS

MEASURING INSTRUMENTS

MAGNETIC MATERIALS

## Model KM-S SIMPLE HEXAGONAL HOLDER

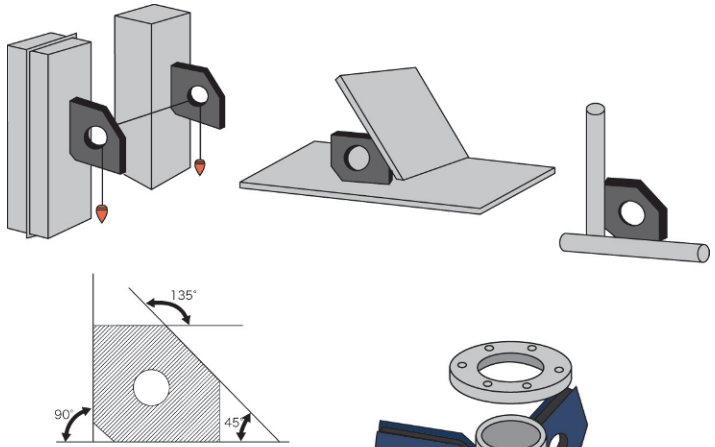
MAGNETIC TOOLS FOR WELDING OPERATION

LIFTING MAGNET  
MAGBORE  
CHIP & SLUDGE TRANSPORTERS  
EQUIPMENT

ENVIRONMENTAL  
MAGNETIZERS AND  
DEMAGNETIZERS

MAGNETIC EQUIPMENT  
FOR TRANSPORTATION  
SEPARATORS  
HIGH GRADE MAGNETIC  
SEPARATORS

MEASURING TOOLS  
MEASURING INSTRUMENTS  
MAGNETIC MATERIALS



Holding Power		Holding Power	
Round steel	Steel plate	Round steel	Steel plate
250~400N	250~700N	100~200N	150~500N

### [Application]

These holders are used for tack welding and tentative assembly during welding and assembly work. They can be used in wide applications as they hold round pipes and round steel.

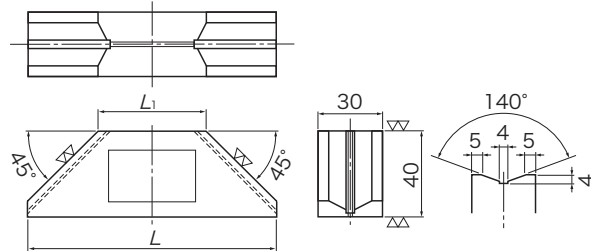
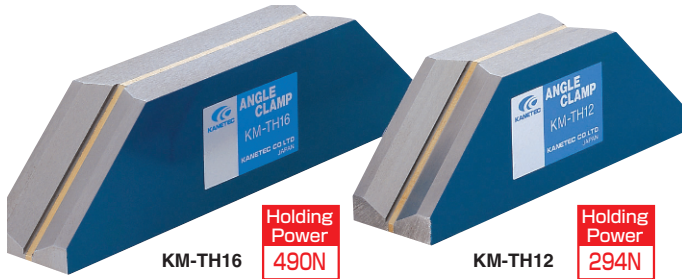
### [Features]

- The holding angle can be set to 45°, 90° and 135°.
- Compact and handy. Lower cost and simpler than the hexagonal holder KM-S.
- The concave attractive face can hold certain round steel.

Model	Holding Power		Dimensions	Dia of round Steel	Mass
	Round Steel	Steel Plate			
KM-S9	100—200N (10—20kgf)	150—500N (15—50kgf)	90 (3.54) × 90 (3.54) × 14 (0.55)	min φ 10 (0.39)	0.5kg/ 1.10 lb
	{ 50—100N ( 5—10kgf) }	{ 100—300N (10—30kgf) }			
KM-S12	250—400N (25—40kgf)	250—700N (25—70kgf)	120 (4.72) × 120 (4.72) × 26 (1.02)	min φ 24 (0.94)	1.2kg/ 2.64 lb
	{ 150—250N (15—25kgf) }	{ 200—500N (20—50kgf) }			

※ The holding power applies to iron plate, SS400, 10mm thickness, and ground surface.  
Note : The holding power in { } is for attraction on one face in the case of double-face attraction.

## Model KM-TH ANGLE CLAMP



### [Application]

Usable to temporarily hold workpieces during tack welding and assembly or to hold gages and rulers.

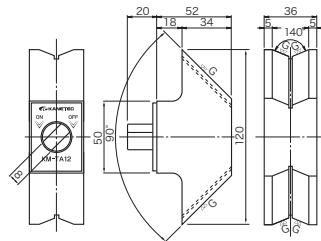
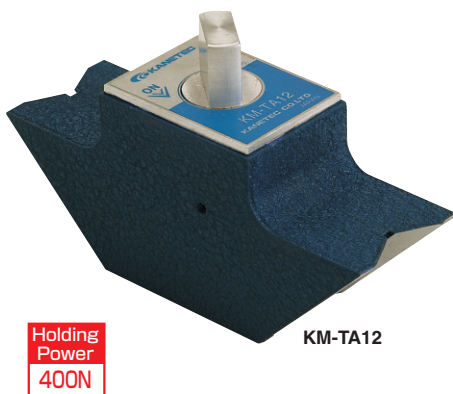
### [Features]

- The all inclined sides provide strong magnetic force. Angles of 45°, 90° and 135° can be used.

Model	Holding Power	Dimensions		Mass
		L	L <sub>1</sub>	
KM-TH12	294N (30kgf)	115 (4.52)	50 (1.96)	0.8kg / 1.76 lb
KM-TH16	490N (50kgf)	155 (6.10)	90 (3.54)	1.2kg / 2.64 lb

※ The holding power applies to SS400, thickness 10mm and ground surface.

## Model KM-TA ANGLE CLAMP



### [Application]

This clamp can be used for tentative holding and tentative assembly during welding to hold workpieces strongly. It can also be used as a block.

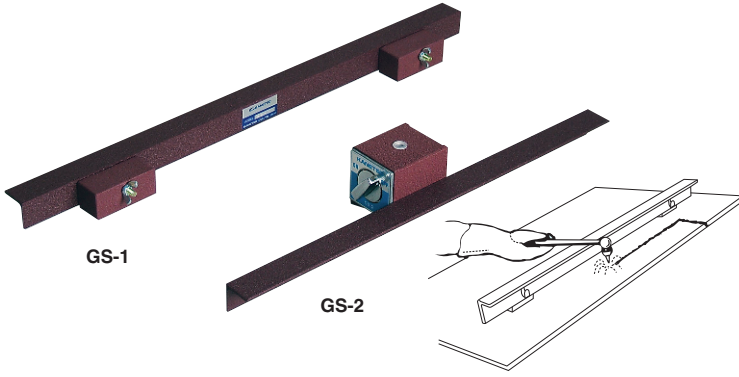
### [Features]

- The V-groove on the attractive face enables this clamp to be used for materials having curved surfaces such as round steel and pipe in addition to flat materials.
- ON-OFF switchover function provided.
- Holding angle 90° only.

Model	Holding Power	Dimensions			Mass
		Length	Width	Height	
KM-TA12	400N (40kgf)	72	36	120	1kg/ 2.20 lb
		(2.83)	(1.41)	(4.72)	

※ The holding power applies to SS400, thickness 10mm and ground surface.

Model **GS** GUIDE SCALE



[Application]

Special guide tools for moving the torch while maintaining the height of the nozzle during gas welding.

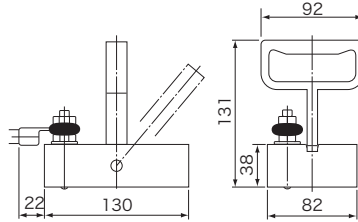
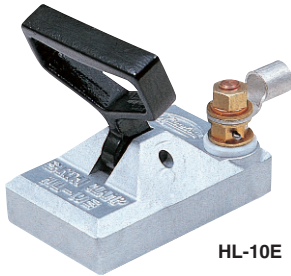
[Features]

- A high performance permanent magnet holds the scale strongly.
- Model GS-1 allows scale up-down adjustment according to the height of the nozzle.
- Model GS-2 allows its magnetic force to be turned on and off with a lever for easy mounting and dismounting.

Model	Holding Power	Length	Width	Height	Mass
GS-1	350N (35kgf)	500 (19.6)	85 (3.34)	70 (2.75)	1.1kg/2.42 lb
GS-2	1000N (100kgf)	400 (15.7)	68 (2.67)	40 (1.57)	2.3kg/5.07 lb

※GS-2 can be mounted and dismounted easily with a select lever.  
 ※The holding power applies to SS400, thickness 10mm and ground surface.

Model **HL-E** EARTH CLAMP



[Application]

Capable of connecting earth terminals on a wide variety of faces.

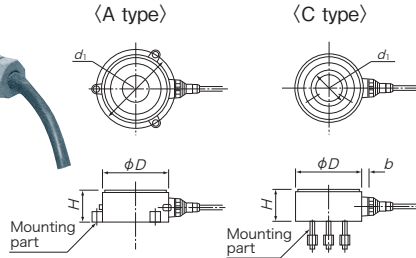
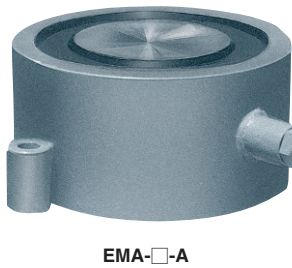
[Features]

- A high performance permanent magnet is used for easy mounting and dismounting by "one-touch" operation.

Model	Holding Power	Current Capacity	Mass
HL-10E	1600N (160kgf)	300A	1.5kg/3.30 lb

※The holding power applies to 16 mm thick mill scale steel plates.

Model **EMA** WELDING JIG



[Application]

Jigs developed for automatic welding of steel plates to hold steel plates and backing materials.

These jigs can be used to hold cut-out pieces during EPM welding operations, to straighten workpieces and to secure stacked steel plates during fusing of stacked steel plates.

[Features]

- Holding and releasing can be controlled electrically.
- Workpieces are secured to a welding frame by a strong magnetic force and therefore warping of steel plates due to welding heat can be prevented.
- Waterproof construction for use for outdoor operations. Highly resistant to impact and heat.

Model	Holding Power		Dimensions				Power Source		Mass	
	Steel Plate 20mm thick	Steel Plate 50mm thick	D	H	d <sub>1</sub>	b	Clamp Hole	Voltage		Current
EMA-25-A	18kN (1800kgf)	24kN (2400kgf)	245 (9.64)	100 (3.93)	290 (11.4)	70 (2.75)	3 (0.11) - φ21 (0.82)	200 VDC	1.0 A	30kg/66.1 lb
EMA-25-C					150 (5.90)		3 (0.11) - M16 (0.62)			
EMA-26-A	20kN (2000kgf)	36kN (3600kgf)	255 (10.0)	120 (4.72)	305 (12.0)		4 (0.15) - φ26 (1.02)		1.4 A	40kg/88.1 lb
EMA-30-A	25kN (2500kgf)	50kN (5000kgf)	296 (11.6)	150 (5.90)	340 (13.3)		3 (0.11) - φ23 (0.90)		1.75A	65kg/ 143 lb
EMA-30-C					200 (7.87)		3 (0.11) -M20 (0.78)			

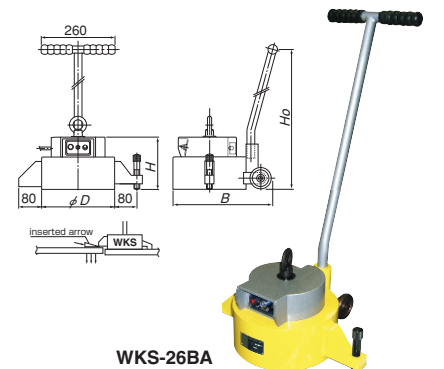
Model **WKS** WELDING JIG

[Application]

Electromagnetic device, which can easily adjust positioning during temporary welding work of iron plates.

[Features]

- It can be attracted at the meeting point by a turn of the switch.
- Amending work can be done easily by inserting an arrow end point.
- Series of WKS-26 and 30 is supplied with wheel for its easy moving.
- WKS-15 type is handy type which is easily to move or handled manually at working site.
- Supplied with a rectifier.



Model	Holding Power		Dimensions				Power Source		Mass
	Steel Plate 20mm thick	Steel Plate 50mm thick	D	H	B	H <sub>b</sub>	Voltage	Current	
WKS-16BA	8kN (800kgf)	10kN (1000kgf)	162 (6.37)	186 (7.32)	—	—	AC200V	0.5 A	Approx16kg/35.2 lb
WKS-26BA	20kN (2000kgf)	36kN (3600kgf)	258 (10.1)	185 (7.28)	435 (17.1)	813 (32.0)		1.5 A	Approx50kg/110 lb
WKS-30BA	25kN (2500kgf)	50kN (5000kgf)	296 (11.6)	220 (8.66)	473 (18.6)	828 (32.5)		1.5 A	Approx70kg/154 lb

MAGNETIC TOOLS FOR WELDING OPERATION

LIFTING MAGNET

MAGBORE

CHIP & SLUDGE TRANSPORTERS

ENVIRONMENTAL EQUIPMENT

MAGNETIZERS AND DEMAGNETIZERS

MAGNETIC EQUIPMENT FOR TRANSPORTATION

MAGNETIC SEPARATORS

HIGH-GRADE MAGNETIC SEPARATORS

MEASURING TOOLS

MEASURING INSTRUMENTS

MAGNETIC MATERIALS