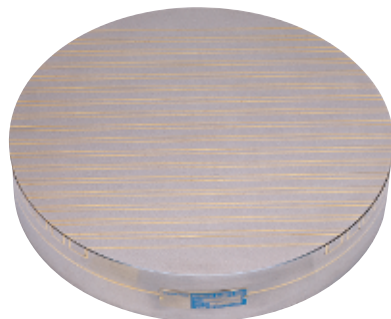
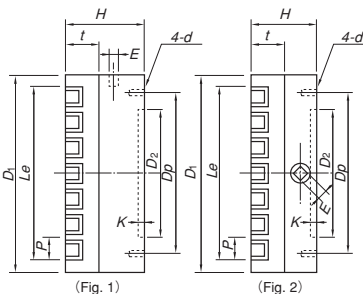


Model **RMC** POWERFUL ROUND PERMANENT MAGNETIC CHUCK

"B" is magnetic force adjust type.

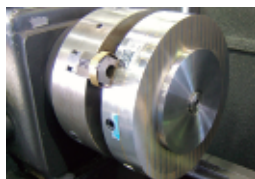


RMC-32



(Fig. 1)

(Fig. 2)



<An example of machining on lathe>

[Application]

Permanent magnetic chucks using a high-performance magnet for grinding operations on rotary grinders, cylindrical grinders, internal grinders and cutting operations on lathes.

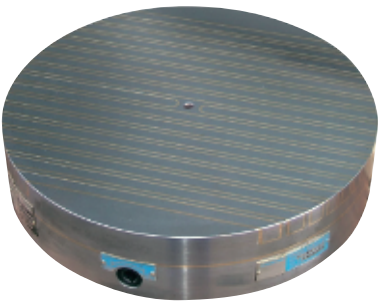
[Features]

- The "B" type can be used in such a way that it first holds a workpiece by a weak magnetic force and after finely adjusting its holding position, it is changed to a strong magnetic force to secure the workpiece firmly.
- Can be used for both grinding and cutting operations.
- Work well on thin workpieces to thick workpieces.
- Highly precise chucks with little accuracy change.

Model		Figure		Nominal Size	Work Face		Pole Pitch	Mounting Face				Face Plate Thickness	Height		Handle Hole		Mass	
Standard	Mag. force adjust	Standard	Mag. force adjust		D ₁	Le		D ₂	K	D _p	d		t	Standard	Mag. force adjust	Standard	Mag. force adjust	Standard
RMC-13	RMC-13B	1	2	125 (4.92)	125 (4.92)	88 (3.46)	15.2 (0.59) (1.5+9+1.5+3.2) (0.05+0.35+0.05+0.12)	100 (3.93)	4 (0.15)	112 (4.40)	M 6 (0.23)	24 (0.94)	55 (2.16)	65 (2.55)	Hex. 8 (0.31)	□8 (0.31)	4.5kg/ 9.92 lb	6kg/ 13.2 lb
RMC-16	RMC-16B			160 (6.29)	160 (6.29)	118 (4.64)		125 (4.92)		140 (5.51)	M 8 (0.31)						7.5kg/ 16.5 lb	9kg/ 19.8 lb
RMC-20	RMC-20B			200 (7.87)	200 (7.87)	149 (5.86)		160 (6.29)		180 (7.08)	M 10 (0.39)						12kg/ 26.4 lb	15kg/ 33 lb
RMC-25	RMC-25B			250 (9.84)	250 (9.84)	194 (7.63)		200 (7.87)		224 (8.81)							20kg/ 44 lb	23kg/ 50.7 lb
RMC-32	RMC-32B			315 (12.4)	315 (12.4)	255 (10.0)		250 (9.84)		280 (11.0)	□10 (0.39)						29kg/ 63.9 lb	35kg/ 77.1 lb
RMC-40	RMC-40B			400 (15.7)	400 (15.7)	331 (13.0)		315 (12.4)		355 (13.9)							47kg/ 103 lb	62kg/ 138 lb

※ As for the handle, a hex wrench key is included with Models RMC-13 to 20, and a dedicated handle is included with Models RMC-25 and above.

Model **RMCB** ROUND PERMANENT MAGNETIC CHUCK WITH TAPPED HOLE IN CENTER OF FACE PLATE



RMCB-32B

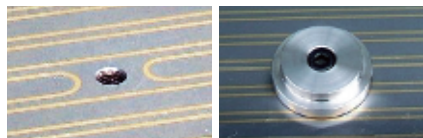
Round permanent magnetic chucks with a tapped hole for easy mounting of various jigs/fixtures introduced!

[Application]

Permanent magnetic chucks to hold workpieces during grinding operations on rotary grinders, cylindrical grinders, internal grinders and cutting operations on lathes.

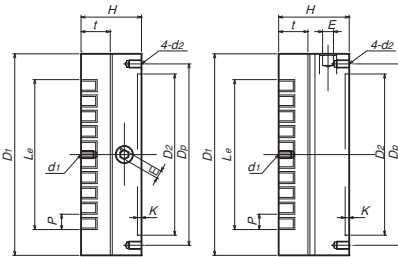
[Features]

- Two types; standard type and magnetic force adjust type are available.
- As a standard feature, a tapped hole is provided in the center of the attractive face. This facilitates mounting of jigs/fixtures for workpiece alignment.
※ The tapped hole in the center is allowed to be M10 max. for the chuck size φ160 and M12 max. for φ200 or over. (For the φ125 size only, a tapped hole must not be worked on.)
- There is a 9-mm additional work allowance from the attractive face, which allows additional work according to jigs/fixtures.
- The permanent magnetic chucks that do not require electricity can be mounted easily without troublesome wiring. They also contribute to energy saving.



Tapped hole in center

An example of mounting of alignment jig



(Fig. 1)

(Fig. 2)

Model		Fig		Nominal Size	Work Face		Pole Pitch	Mounting Face				Face Plate Thickness	Height		Tapped Hole in Center	Handle Hole		Mass	
Standard	Mag. force adjust	Standard	Mag. force adjust		D ₁	Le		D ₂	K	D _p	d2		t	Standard		Mag. force adjust	d _t	Standard	Mag. force adjust
RMCB-13	RMCB-13B	1	2	125 (4.92)	125 (4.92)	88 (3.46)	15.2 (0.59) (1.5+9+1.5+3.2) (0.05+0.35+0.05+0.12)	100 (3.93)	4 (0.15)	112 (4.40)	M 6 (0.23)	29 (1.14)	60 (2.36)	70 (2.75)	M6(0.23) Depth12(0.47)	Hex. 8 (0.31)	5kg/ 11.0 lb	7kg/ 15.4 lb	
RMCB-16	RMCB-16B			160 (6.29)	160 (6.29)	118 (4.64)		125 (4.92)		140 (5.51)	M 8 (0.31)						8kg/ 17.6 lb	10kg/ 22.0 lb	
RMCB-20	RMCB-20B			200 (7.87)	200 (7.87)	149 (5.86)		160 (6.29)		180 (7.08)	M 10 (0.39)						13kg/ 28.6 lb	16kg/ 35.2 lb	
RMCB-25	RMCB-25B			250 (9.84)	250 (9.84)	194 (7.63)		200 (7.87)		224 (8.81)							21kg/ 46.3 lb	25kg/ 55.1 lb	
RMCB-32	RMCB-32B			315 (12.4)	315 (12.4)	255 (10.0)		250 (9.84)		280 (11.0)	□10 (0.39)						31kg/ 68.3 lb	37kg/ 81.5 lb	
RMCB-40	RMCB-40B			400 (15.7)	400 (15.7)	331 (13.0)		315 (12.4)		355 (13.9)							51kg/ 112.4 lb	67kg/ 147.7 lb	

※ As for the handle, a hex wrench key is included with Standard Models RMCB-13 to 20, and a special changeover handle is included with Models RMCB-25 and above. A T-handle is included with the magnetic force adjust types.

ELECTROMAGNETIC CHUCKS
CHUCK CONTROLLERS
PERMANENT MAGNETIC CHUCKS
PERMANENT ELECTROMAGNETIC CHUCKS
BLOCKS FOR MC
VACUUM CHUCKS
PROMELTA* SYSTEM
SINE BAR CHUCKS
BLOCKS, HOLDERS, MINI CHUCKS
HOLDING TOOLS
MEASURING TOOL HOLDERS
MAGNETIC HOLDERS
MAGNETIC TOOLS