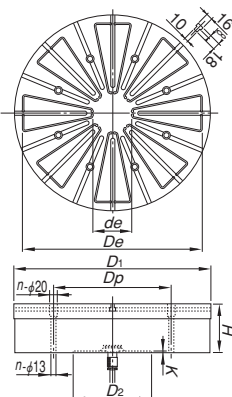
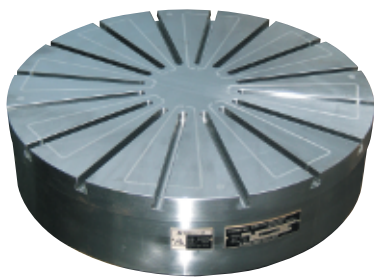


Model **EPC** ROUND PERMANENT ELECTROMAGNETIC CHUCK

Revolutionary permanent electromagnetic chuck!
Magnetic force adjustable!

Patented



[Application]

Suitable for machining of ring-shaped workpieces such as bearings while rotating them on lathes, turning machines, cylindrical grinders and rotary grinders.

[Features]

- When used in combination with a dedicated controller equipped with a magnetic force adjust function, the magnetic force can be adjusted between strong and weak.
- Since internal heat generation and thermal distortion are minimal, highly precise machining is possible.
- Can be used in wet operations.
- These chucks are provided with T-grooves to make them suitable for various workpieces.

EPC-50AS-S
<An example of special fabrication>

Chuck controller required additionally

A size φ 1200 and larger is also available.

Model	Nominal Size	Work Face			No. of Poles	Mounting Face			Height	Voltage	Current	Mass	Electro Chuck Master
		D ₁	D _e	d _e		D ₂	K	n					
EPC- 50AST	500 (19.6)	500 (19.6)	460 (18.1)	100 (3.93)	8	200 (7.87)	5 (0.19)	300 (11.8)	125 (4.92)	180 VDC	27A	Approx. 140kg/ 308 lb	EPS-RW230A
EPC- 70AST	700 (27.5)	700 (27.5)	656 (25.8)	120 (4.72)							400 (15.7)	12	500 (19.6)
EPC- 90AST	900 (35.4)	900 (35.4)	850 (33.4)	200 (7.87)	500 (19.6)	18	1000 (39.4)	140 (5.51)	45A		Approx. 600kg/ 1323 lb		
EPC-120AST	1200 (47.2)	1200 (47.2)	1150 (45.2)	300 (11.8)	650 (25.5)				6 (0.23)		18	150 (5.90)	60A

※ The chuck controller is not included.
 ※ The slip ring (carbon brush included) is optional. The brush holder support bar for the slip ring should be provided by the user.
 ※ Turning the permanent electromagnetic chucks on and off must be limited to once per several minutes. If on/off operations are repeated frequently, the chucks may be damaged by overheat.

※ Dedicated operation box (Size 140×70×155, cord 5 m) included.

Model	Power Source	Output		Dimensions			Mass
		Voltage	Current	Width	Height	Depth	
EPS-RW230A	200 VAC (50/60Hz)	180 VDC (16 steps)	30A	400 (15.7)	480 (18.8)	190 (7.48)	Approx. 15kg/ 33.0 lb
EPS-RW250A			50A		725 (28.5)	250 (9.84)	Approx. 35kg/ 77.1 lb
EPS-RW275A			75A				



Model **EPC-Z** POWERFUL ROUND PERMANENT ELECTROMAGNETIC CHUCK

Construction machinery / Ship building / Nuclear power plant / Wind power generation
Highly precise machining of ring-shaped workpiece such as bearings!



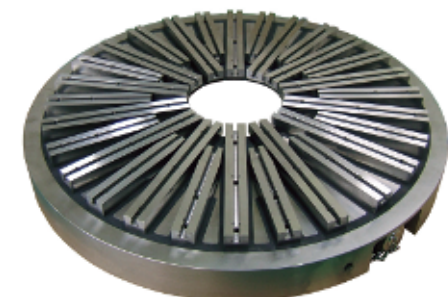
Chuck controller required additionally

[Application]

Suitable for machining of ring-shaped workpieces such as bearings while rotating them on lathes and cylindrical grinders.

[Features]

- The employment of a magnetic pole construction suitable for cutting has increased the holding power. Suitable for cutting operations where large load is applied.
- The rectangular magnetic poles provide consistent holding power regardless of workpiece sizes.
- By using included blocks with T-grooves and adapter blocks, various workpieces, small and large, can be held.
- By mounting blocks, workpieces can be machined while being lifted. This feature enables it to machine workpieces from any direction. Also removal of chips and maintenance are easy.



EPC-Z90

<Chuck controller>

Model	Dimensions	No. of Poles	Applicable Workpiece Diameter		Mass	Electro Chuck Master
			Min. dia.	Max. dia.		
EPC-Z60	φ 640 (25.1) × 90 (3.54)	14	250 (9.84)	600 (23.6)	170kg/ 374 lb	EPS-PZ2100A-2
EPC-Z90	φ 950 (37.4) × 90 (3.54)			900 (35.4)	410kg/ 904 lb	EPS-PZ2100A-4
EPC-Z120	φ 1250 (49.2) × 90 (3.54)	28 (14+14)		1200 (47.2)	725kg/ 1598 lb	EPS-PZ2100A-6
EPC-Z150	φ 1550 (61.0) × 110 (4.33)	44 (22+22)	500 (19.6)	1500 (59.0)	1280kg/ 2822 lb	EPS-PZ2100A-8
EPC-Z180	φ 1850 (72.8) × 110 (4.33)	43	800 (31.5)	1800 (70.8)	1580kg/ 3483 lb	EPS-PZ2100A-10
EPC-Z200	φ 2050 (80.7) × 110 (4.33)	50	1000 (39.4)	2000 (78.7)	1800kg/ 3969 lb	EPS-PZ2100A-10

※ The chuck controller is not included.
 ※ The power is supplied through the metal connector (with cable connection confirmation signal) on the side of the chuck.

Model	Power Source	Output		Breaker Capacity	Dimensions			Mass
		Voltage	Current		Width	Height	Depth	
EPS-PZ2100A-2	200 VAC (50 / 60Hz) 1 φ	90 VDC × 2 times switching	Pulse 100 A (per switching)	30A	450 (17.7)	450 (17.7)	200 (7.87)	15kg/ 33.0 lb
EPS-PZ2100A-4					250 (9.84)	750 (29.5)	250 (9.84)	35kg/ 77.1 lb
EPS-PZ2100A-6								40kg/ 88.2 lb
EPS-PZ2100A-8								50kg/ 110 lb
EPS-PZ2100A-10								80kg/ 176 lb

ELECTROMAGNETIC CHUCK CONTROLLERS PERMANENT ELECTROMAGNETIC CHUCKS EPC-50AST EPC-70AST EPC-90AST EPC-120AST EPS-RW230A EPS-RW250A EPS-RW275A BLOCKS FOR MC VACUUM CHUCKS PROMELTA* SINE BAR CHUCKS BLOCKS, HOLDERS, MINI CHUCKS HOLDING TOOLS MEASURING TOOL HOLDERS MAGNETIC HOLDERS TOOLS MAGNETIC TOOLS