

Model KM-S SIMPLE HEXAGONAL HOLDER



KM-S12

KM-S9

Holding Power	
Steel bar 250-400N	Steel plate 250-700N

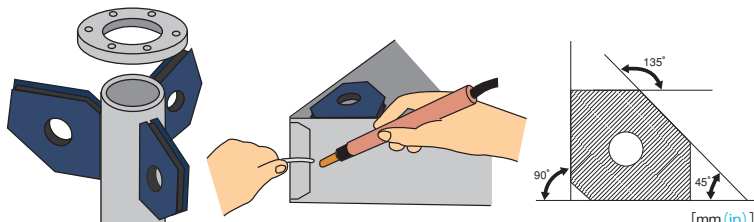
Holding Power	
Steel bar 100-200N	Steel plate 150-500N

[Application]

These holders are used for tack welding and temporary assembly during welding and assembly work. They can be used in wide applications as they hold round pipes and round steel bars.

[Features]

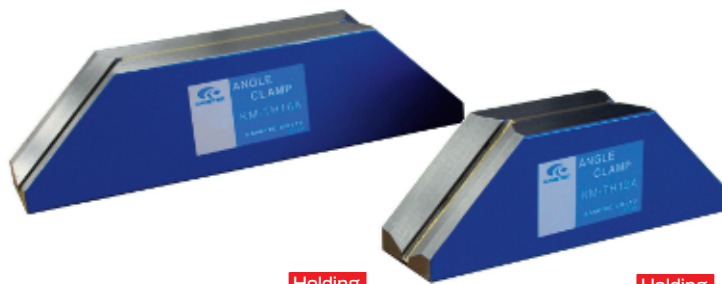
- The holding angle can be set to 45°, 90° and 135°.
- Compact and handy. Lower cost and simpler than the hexagonal holder KM-S.
- The concave attractive face can hold certain round steel bars.



Model	Holding Power		Dimensions	Dia. of Steel Bar	Mass
	Steel bar	Steel Plate			
KM-S9	100-200N (10-20kgf) { 50-100N (5-10kgf) }	150-500N (15-50kgf) { 100-300N (10-30kgf) }	90 (3.54) × 90 (3.54) × 14 (0.55)	min φ 10 (0.39)	0.5kg / 1.10 lb
KM-S12	250-400N (25-40kgf) { 150-250N (15-25kgf) }	250-700N (25-70kgf) { 200-500N (20-50kgf) }	120 (4.72) × 120 (4.72) × 26 (1.02)	min φ 24 (0.94)	1.2kg / 2.64 lb

※ The holding power on steel plate is based on a test piece of SS400, 10 mm thick, ground surface.
 Note : The holding power in { } is for attraction on one face in the case of double-face attraction.

Model KM-TH ANGLE CLAMP

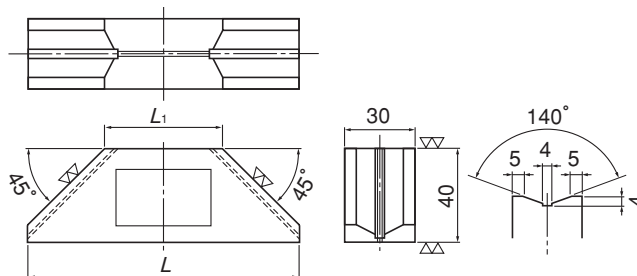


KM-TH16A

Holding Power 550N

KM-TH12A

Holding Power 450N



[Application]

Usable for temporary holding during tack welding and assembly and for holding down gages and rulers.

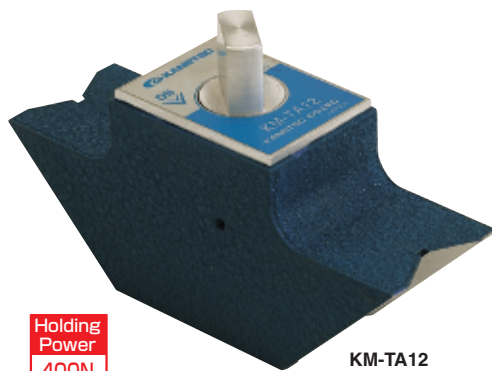
[Features]

- The all trapezoidal sides provide a strong magnetic force. The angles of 45°, 90° and 135° can be used.

Model	Holding Power	Dimensions		Mass
		L	L ₁	
KM-TH12A	450N (45kgf)	115 (4.52)	50 (1.96)	0.8kg / 1.76 lb
KM-TH16A	550N (55kgf)	155 (6.10)	90 (3.54)	1.2kg / 2.64 lb

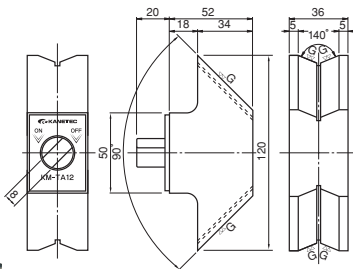
※ The holding power is based on a test piece of SS400, 10 mm thick, ground surface.

Model KM-TA ANGLE CLAMP



Holding Power 400N

KM-TA12



[Application]

This clamp can be used for temporary holding and temporary assembly during welding. It can hold workpieces firmly.

[Features]

- The V-groove provided on the attractive face enables this clamp to be used for workpieces having curved surfaces such as round steel bars and pipes in addition to flat workpieces.
- ON-OFF function provided.
- Holding angle 90° only.

Model	Holding Power	Dimensions			Mass
		Length	Width	Height	
KM-TA12	400N (40kgf)	72 (2.83)	36 (1.41)	120 (4.72)	1kg / 2.20 lb

※ The holding power is based on a test piece of SS400, 10 mm thick, ground surface.



Precautions for use

These holders cannot be used for work where heat is applied for long hours. If the magnet is subjected to high temperature, its magnetic force will drop or be lost suddenly, causing the workpiece to come off the attractive face. Exercise caution.