

MAGNETIC SEPARATORS

Model HEM-C ROUND ELECTROMAGNET FOR IRON REMOVAL

Air-cooled



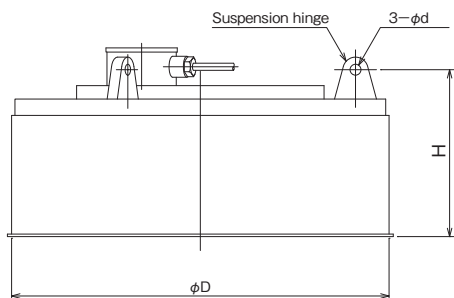
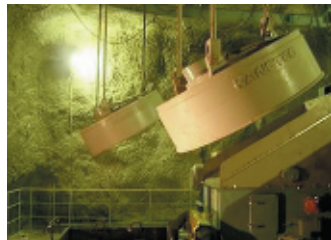
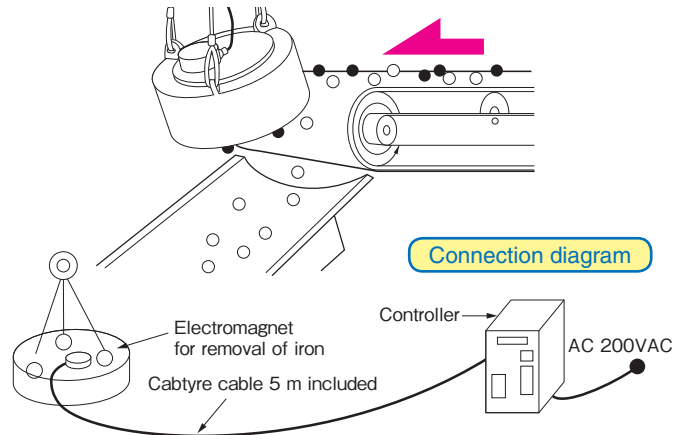
HEM-70C

[Application]

The standard suspended electromagnet designed for removing iron from substances on conveyors. This model is suitable for removing iron from ores and various materials (glass, ceramics, sugar, paper, chemicals, etc.) as well as from crushed stone in crushing plants and from casting sand in casting plants.

[Features]

- Light weight and compact for easy handling.
- Minimum maintenance and weather resistant.

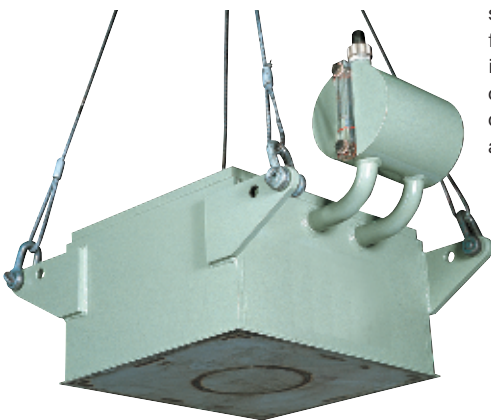


Model	Conveyor Belt Width	Conveyor Installation Length	Dimensions			Power Consumption	Mass	Applicable Rectifier
			ϕD	H	d			
HEM-40C	350 (13.7)	120 (4.72) - 150 (5.90)	400 (15.7)	240 (9.44)	16 (0.62)	0.51kW	170kg/ 375 lb	KR-A208
HEM-50C	400 (15.7)	130 (5.11) - 180 (7.08)	500 (19.6)	300 (11.8)	22 (0.86)	0.82kW	310kg/ 683 lb	
HEM-65CN	500 (19.6)	150 (5.90) - 200 (7.87)	650 (25.5)	320 (12.5)	22 (0.86)	1.5/1.8kW	340kg/ 749 lb	HEMR-65CNI
HEM-75CN	600 (23.6)	150 (5.90) - 250 (9.84)	750 (29.5)	330 (12.9)	26 (1.02)	2.0/2.4kW	460kg/ 1014 lb	HEMR-75CNI
HEM-90CN	750 (29.5)	200 (7.87) - 300 (11.8)	900 (35.4)	400 (15.7)	26 (1.02)	2.6/3.1kW	830kg/ 1829 lb	HEMR-90CNI
HEM-110CN	900 (35.4)	250 (9.84) - 350 (13.7)	1100 (43.3)	465 (18.3)	32 (1.25)	3.9/4.7kW	1350kg/ 2976 lb	HEMR-110CNI
HEM-130CN	1050 (41.3)	300 (11.8) - 450 (17.7)	1300 (51.1)	535 (21.0)	36 (1.41)	6.1/7.4kW	2300kg/ 4850 lb	HEMR-130CNI
HEM-150CN	1200 (47.2)	400 (15.7) - 550 (21.6)	1500 (59.0)	585 (23.0)	42 (1.65)	7.3/8.8kW	3350kg/ 7385 lb	HEMR-150CNI

※ The power consumption is based on 200 VAC, 50/60 Hz. (HEM-40C/50C consume the same amount of electricity on both 50 Hz and 60 Hz.)
 ※ The belt conveyor width for each model is for reference only. As the model to be selected can be different depending on the flow width and volume of objects to process, please consult with us.

Model HEM-BS SUSPENDED ELECTROMAGNET FOR IRON REMOVAL

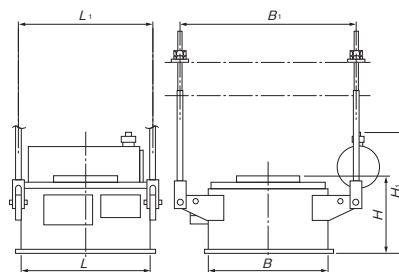
Oil-cooled



HEM-BS65

[Application]

This model utilizes the electromagnet design taken from the suspended electromagnetic separator and is recommended for use where there is a relatively small amount of mixed iron pieces on conveyors. This model is for use on large conveyors as with Model BST, but is most suitable for operations where the amount of mixed iron pieces is small and attracted iron pieces can be removed periodically.



[Features]

- There are no moving parts and the construction is simple for trouble-free operation.
- The oil-cooled system can keep temperature rise and heating below a certain level when in continuous operation. (For cooling oil used, see page 134.)
- The separating capacity is about the same as Model BST.
- The magnetic separation efficiency is high because an effective magnetic field is produced all over the attractive face.
- The applicable belt width has been widened.

Model	Conveyor Belt Width	Conveyor Installation Length	Dimensions					Power Consumption	Mass	Applicable Rectifier	
			L	B	H	L ₁	B ₁				H ₁
HEM-BS65	450 (17.7)	150 (5.90) - 200 (7.87)	650 (25.5)	650 (25.5)	347 (13.6)	755 (29.7)	1025 (40.3)	605 (23.8)	1.5Kw	590kg/ 1300 lb	HEMR-BS 65
HEM-BS80	600 (23.6)	150 (5.90) - 250 (9.84)	800 (31.5)	800 (31.5)	328 (12.9)	905 (35.6)	1175 (46.2)	570 (22.4)	2.4Kw	870kg/ 1918 lb	HEMR-BS 80
HEM-BS90	750 (29.5)	200 (7.87) - 300 (11.8)	900 (35.4)	900 (35.4)	349 (13.7)	1005 (39.5)	1360 (53.5)	600 (23.6)	3.1Kw	1200kg/ 2646 lb	HEMR-BS 90
HEM-BS100	900 (35.4)	250 (9.84) - 350 (13.7)	1000 (39.4)	1000 (39.4)	485 (19.0)	1115 (43.8)	1583 (62.3)	790 (31.1)	4.0Kw	1820kg/ 4013 lb	HEMR-BS100
HEM-BS115	1050 (41.3)	300 (11.8) - 350 (13.7)	1150 (45.2)	1150 (45.2)	496 (19.5)	1265 (49.8)	1733 (68.2)	785 (30.9)	5.2Kw	2800kg/ 6174 lb	HEMR-BS115
HEM-BS130	1200 (47.2)	300 (11.8) - 400 (15.7)	1300 (51.1)	1300 (51.1)	593 (23.3)	1431 (56.3)	1926 (75.8)	890 (35.0)	6.6Kw	4100kg/ 9040 lb	HEMR-BS130
HEM-BS150	1400 (55.1)	300 (11.8) - 450 (17.7)	1500 (59.0)	1500 (59.0)	498 (19.6)	1643 (64.6)	2126 (83.7)	775 (30.5)	8.7Kw	4900kg/ 10804 lb	HEMR-BS150
HEM-BS170	1600 (62.9)	400 (15.7) - 550 (21.6)	1700 (66.9)	1700 (66.9)	575 (22.6)	1843 (72.5)	2326 (91.5)	840 (33.0)	10.4Kw	6500kg/ 14332 lb	HEMR-BS170

※ The power consumption is based on 200 VAC (50 Hz).

※ The belt conveyor width for each model is for reference only. As the model to be selected can be different depending on the flow width and volume of objects to process, please consult with us.