

TESLA METER (磁束密度計) TM-901EXP

DISPLAY

- "REAL" and "PEAK HOLD" are displayed at the same time.
- A light can be tuned ON and OFF manually.



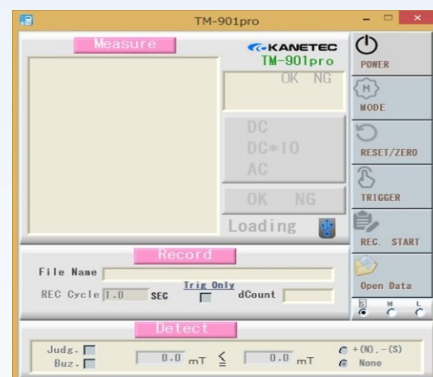
MESUREMENT RANGE : 0~3000.0mT



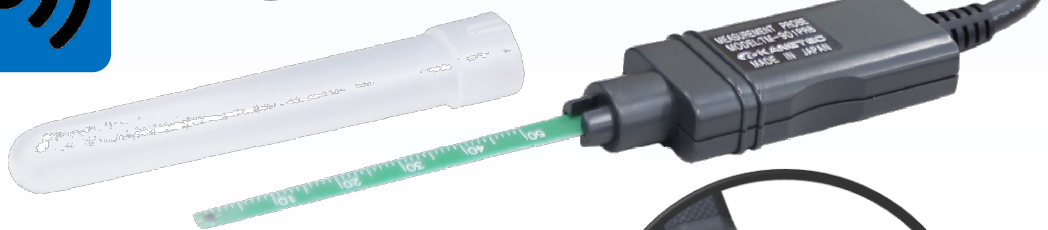
USB Type C

DETECT MODE

The magnetic flux density measurements range can be set by user and has a buzzing sound when in range.



FREE Software



CE Marking

Flat grip



MODEL TM-901EXP
BATTERY UM-3x4
DC 6V
SER. NO. 00006
KANETEC CO., LTD.
MADE IN JAPAN

OPEN

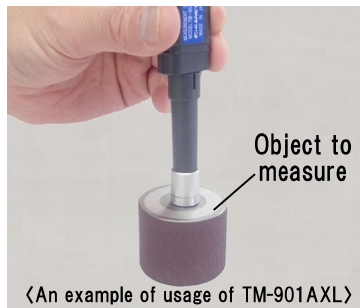
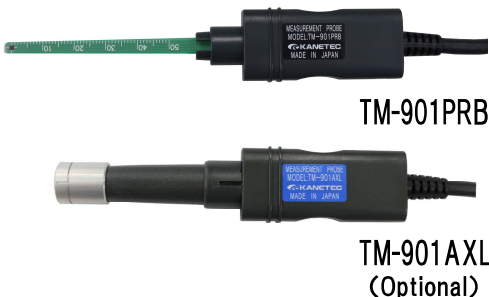
Features

Model	TM-901 EXP			Function	Zero reset	Polarity judgment
Object to detect	DC magnetic flux density Polarities (N, S)		AC magnetic flux density 40-500Hz		Max. detect value hold	Auto power off (Cancellable)
Unit of measurement	mT/G both of two modes switchable			Output	Digital output (USB) / Analog output	
Measurement range	0~3000.0mT			Indication	Detected value	Digital
Measurement mode	Measurement mode	Measuring range	Resolution		Indication accuracy	Polarity
				Measuring range		Resolution
DC × 1*	0~200.0mT	0.1mT	±(5% of rdg.+ 3digit)		Power source	
	200.1~3000.0mT	1mT	±(5% of rdg.+10digit)	Dimensions		143mm(5.62in) high × 64mm(2.51in) wide × 36mm(1.41in) thick
DC × 10	0~300.00mT	0.01mT	±(3% of rdg.+ 5digit)		Mass	Approx. 290g(0.63lb) (batteries & probe included)
				AC**		0~150.00mT
150.1~300.0mT	0.1mT	±(5% of rdg.+20digit)	Optional		Axial probe (TM-901AXL) Reference magnetic field (TM-SMF、TM-AMF)	
301.0~1500.00mT	1mT					

*The measuring range is automatically selected. Note: This meter is not designed for measurement of electromagnetic waves.

Option / Accessories

Model TM MEASUREMENT PROBE FOR TESLA METER



[Application]

A measurement probe for TM-901.

[Features]

Please keep this probe as a spare.

It can be replaced without troublesome calibration. In addition to the standard PRB (transverse type), an axial type (AXL) capable of vertical measurement and having high durability is optionally available.

Model	Applicable Model	Tip Dimensions	Cord Length	Mass
TM-901PRB	Only for TM-901*	(T)1.0(0.03) × (W)3.5(0.13) × (L)65(2.55)	1000 (39.4)	50g/0.11lb (Including probe cap)
TM-901AXL		φ13(0.51) × 55(2.16)		

※Can be used with Kanetec's conventional models TM-501, TM-601, TM-701 and TM-801.

Model TM-SMF/TM-AMF REFERENCE MAGNETIC FIELD FOR TESLA METER



For standard probe

Applicable probe:
TM-201
and later models

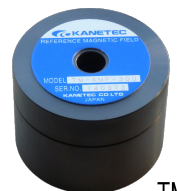
TM-SMF-050

Model	Magnetic Flux Density ※	Dimensions		Mass
		Dia.	Height	
TM-SMF-003	0.003T(30G)	φ 43(1.69)	50(1.96)	Approx. 0.5kg/1.10lb
TM-SMF-050	0.05T(500G)		40(1.57)	Approx. 0.4kg/0.88lb
TM-SMF-300	0.3T(3000G)		30(1.18)	Approx. 0.3kg/0.66lb
TM-SMF-1000	1T(10000G)		74(2.91)	Approx. 2.0kg/4.40lb

※The magnetic flux density is a nominal value. The measurement sheet included with the product shows the actual measured value of the product.

[Application]

- Daily check of the Tesla meter.
- When a calibration certificate of the reference magnetic field is obtained, the calibration of the Tesla Meter becomes economical.



For axial type probe

Applicable probe:
TM-601 AXL,
and later models

TM-AMF-300

Model	Magnetic Flux Density ※	Dimensions		Mass
		Dia.	Height	
TM-AMF-003	0.003T(30G)	φ 70(2.75)	60(2.36)	Approx. 1.4kg/3.08lb
TM-AMF-050	0.05T(500G)		55(2.16)	Approx. 1.3kg/2.86lb
TM-AMF-300	0.3T(3000G)		50(1.96)	Approx. 1.2kg/2.64lb

※The magnetic flux density is a nominal value. The measurement sheet included with the product shows the actual measured value of the product.

[Features]

- The closed circuit construction employing a permanent magnet that causes less magnetic force leak is employed.
- Small and light weight.

KANETEC CO.,LTD.

INTERNATIONAL DEPARTMENT

No. 2-9, 3-chome, Iwamoto-cho, Chiyoda-ku Tokyo 101-0032 Japan

TEL : +81-3-5823-7013

FAX : +81-3-5823-7018

Home page address: <http://www.kanetec.co.jp/>

E-mail address: kokusai_01@kanetec.co.jp

KANETEC U.S.A. CORP.

140 W, Devon Avenue, Bensenville, IL 60106, U.S.A.

TEL: 630-860-1545, 860-2230

FAX: 630-860-9443

Home page address: <https://kanetec.com/>

E-mail address: Kanetec@kanetec.com

The products marked by ® are the registered trademarks of Kanetec Co., Ltd. in Japan.

The products listed in this catalog are subject to change in models, appearance and specifications without notice.